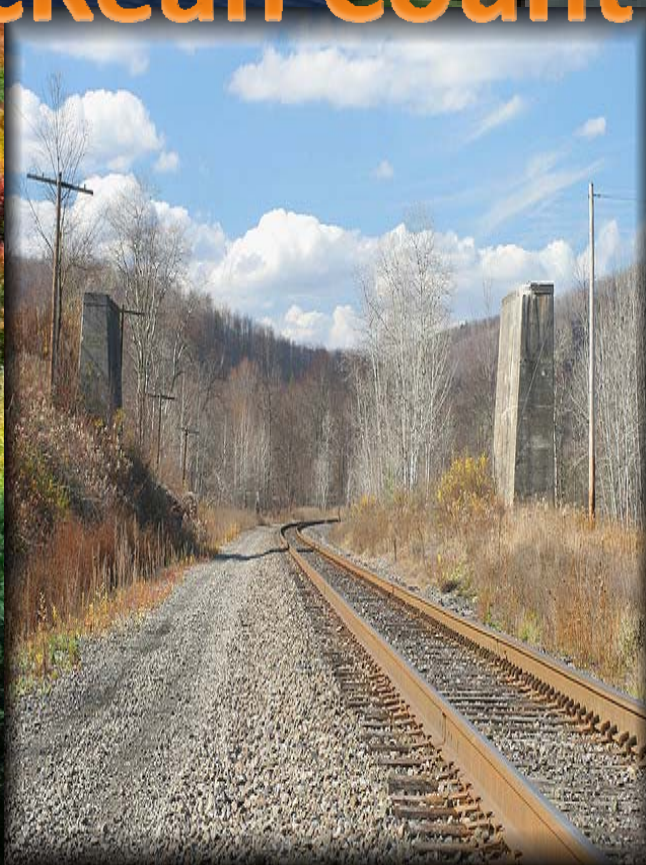




McKean County, PA



Allegheny National Forest



Night flares



WASTE PITS



Fracking
pools



marcellus-shale.us

Mountain Top
Drilling



Appalachian Culture & Sustainability

Course Goals:

- Examine the history of civic, economic, and political institutions in Appalachia.
- Apply this knowledge to ask how civic institutions in McKean County address the needs of local communities.
- Focus on *sustainable* community development, i.e., an integrated approach to meeting social, economic, and environmental challenges.
- Develop a baseline of information to create partnerships and give students applied learning opportunities.





Bradford, PA



Research Process

PART I:

- Identify Participants
- Develop Questionnaire
- Interview Organizations

PART II:

- Compile Data
- Identify Trends
- Draw Conclusions
- Organize Meetings for Future Partnerships





Local Organizations

1.800.345.1780
www.beacon-light.org



Big Brothers Big Sisters

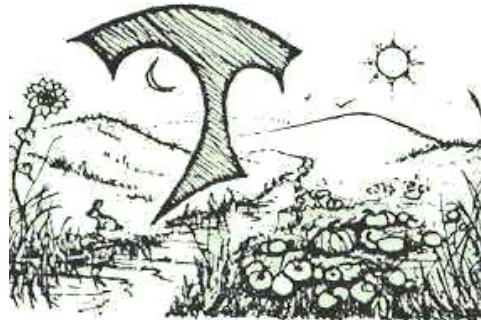


American Red Cross



CPR

eliminating racism
empowering women
ywca



Canticle Farm

A Ministry sponsored by
The Franciscan Sisters of Allegany

3835 South Nine Mile Road
Allegany, New York



ELFFund.org

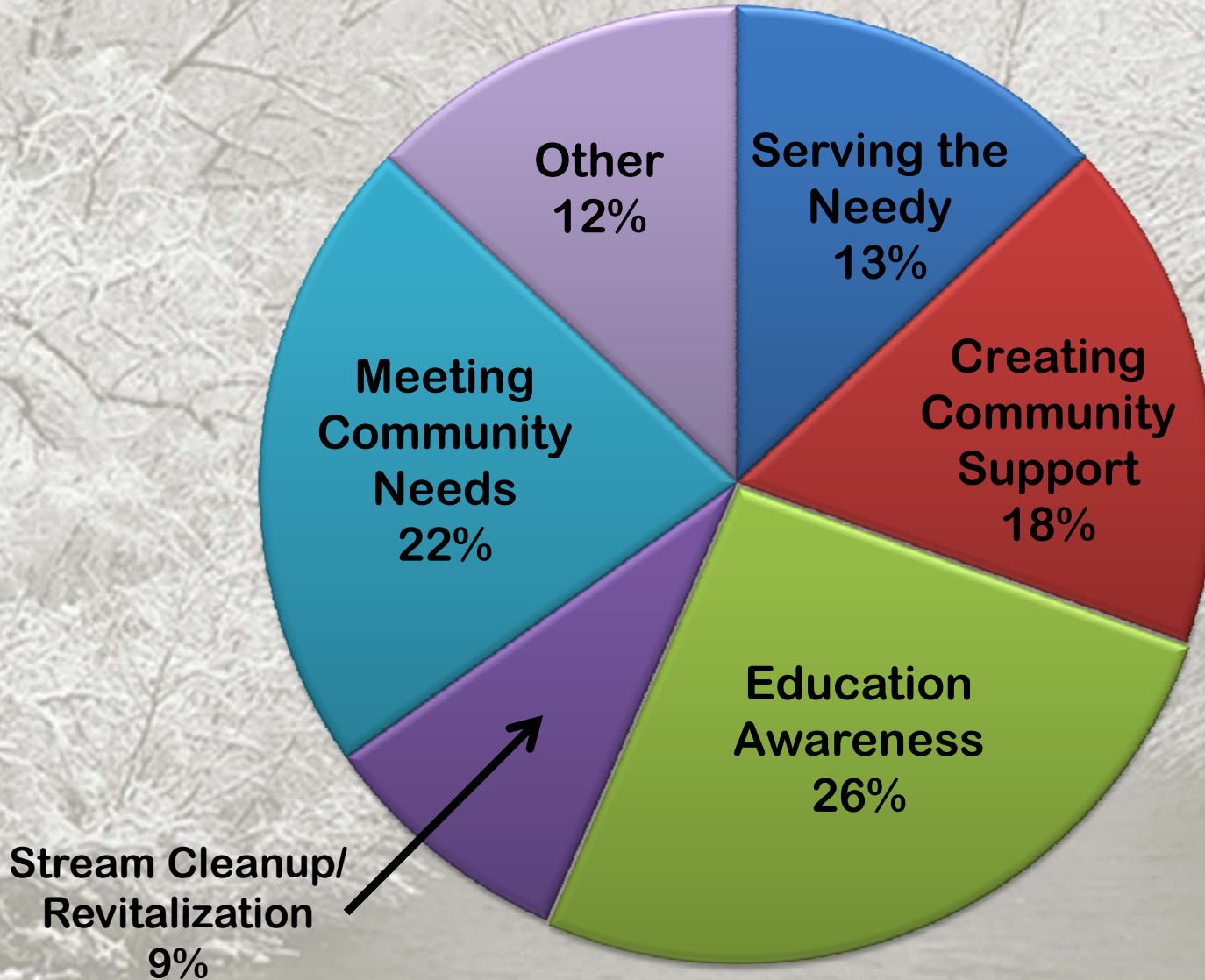


Bradford & McKean Co. Profile

- **County Settled in 1823; Oil Boom in 1871.**
- **Bradford Population: 9,175 (3.15 sq. mile area)**
- **McKean County Population: 43,196**
- **McKean Population Urban: 37%; Rural 63%**
- **McKean Unemployment Rate (2010): 8.8%; PA Rate: 8.8%; US Rate: 9.4%**

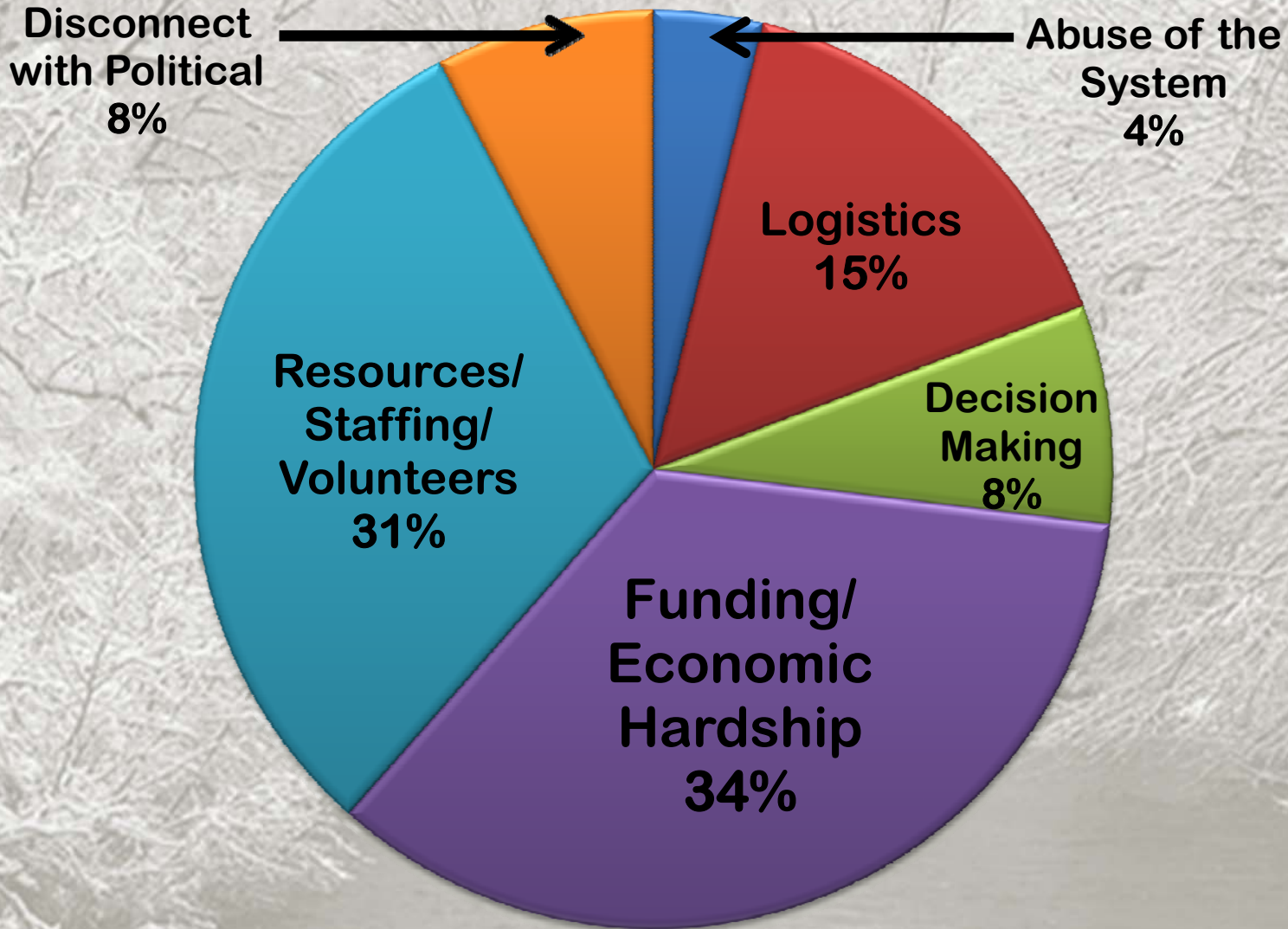
Sources: US Census, US Bureau of Labor Statistics

Results: Goals Most Effectively Met

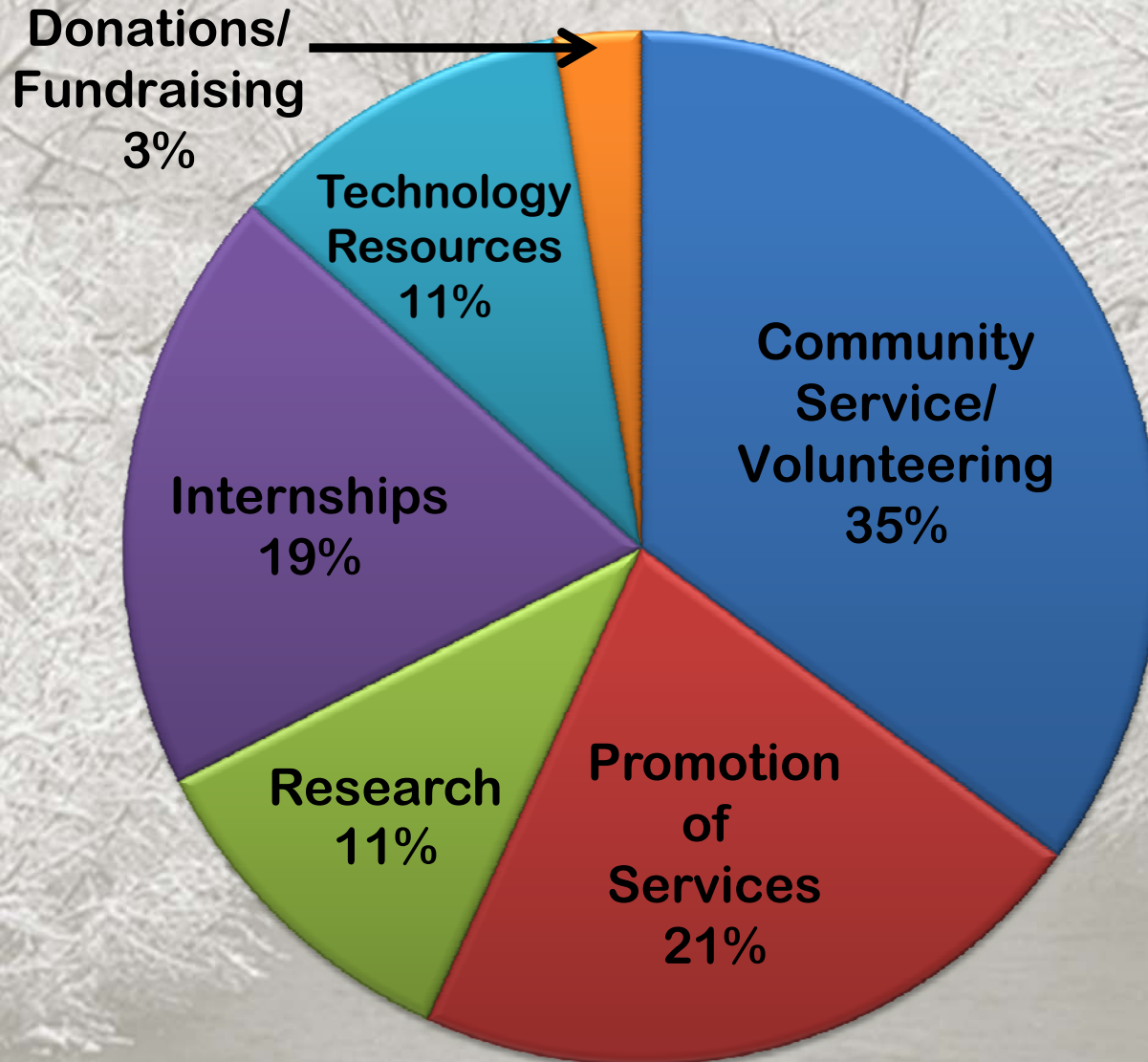


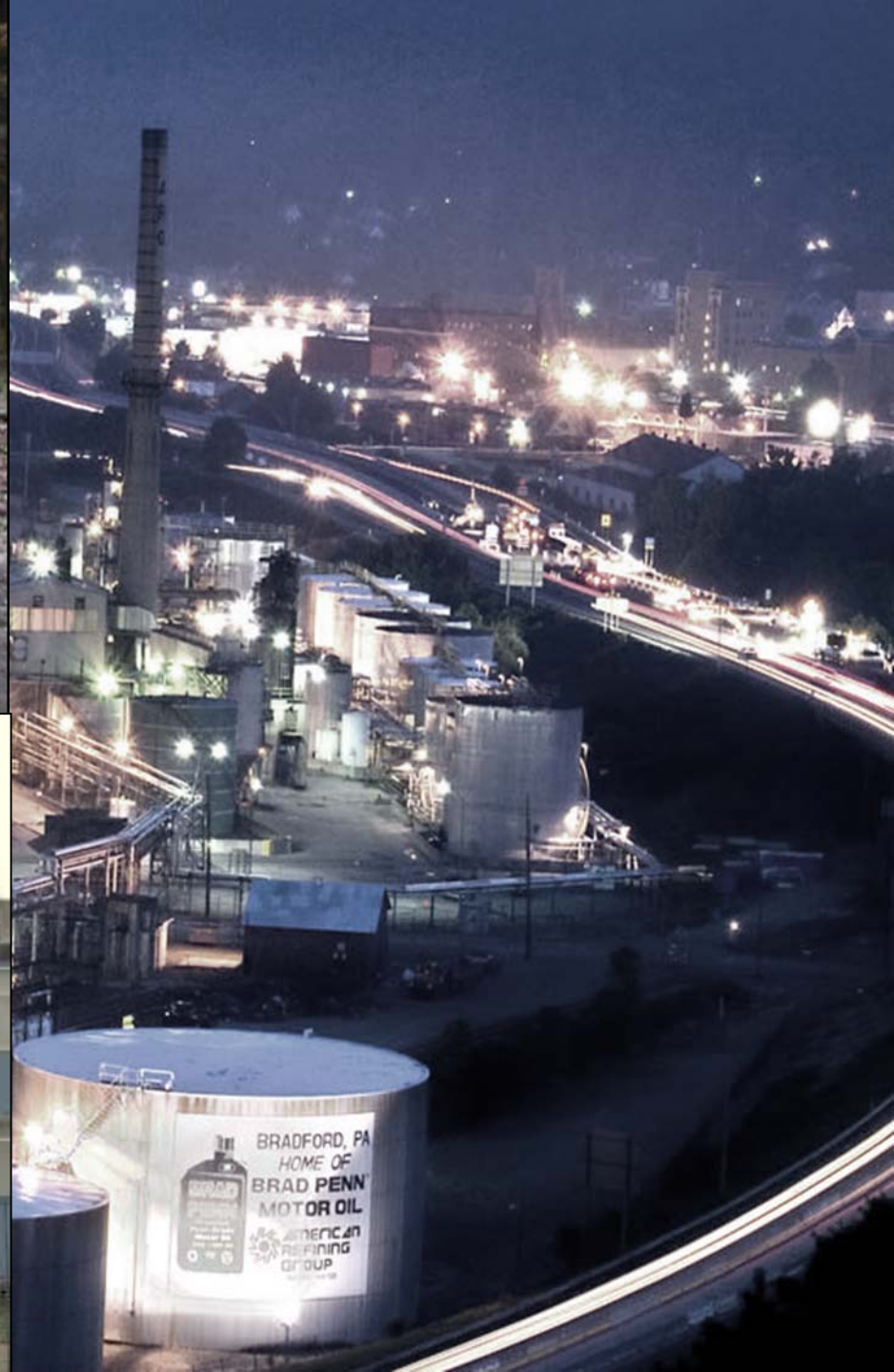


Results: Challenges



Results: What can UPB do?





Conclusions: Enhancing Community Assets and Building Partnerships

