

network of ensemble theaters presents

MICROFEST USA: KNOXVILLE / HARLAN COUNTY

reconnect | october 25-28, 2012

a two-state tour celebrating art and community

KNOXVILLE

SEE Carpetbag Theatre, *The Hungry Heart*, Roadside Theater, The Jo Carson Project

LEARN Highlander Research and Education Center, Farms & Fables, Grow Appalachia, Digital Storytelling

GO The Emporium Center, Beardsley Community Farm, Tribe One

HARLAN COUNTY

SEE Mt. Sinai Spirituals, *Higher Ground*, Pam Holcomb, Noah Hughes, Courageous, Kudzu Killers, Crawdadoween 5, Mitch Barrett, Rich and the Po' Folk

LEARN Building Home, Appalshop, Kentuckians for the Commonwealth

GO Eastern Kentucky Social Club, Pine Mountain Settlement School, Old Everts High School, Portal 31, Southeast Kentucky Community & Technical College, Black Mountain

network of ensemble theaters presents

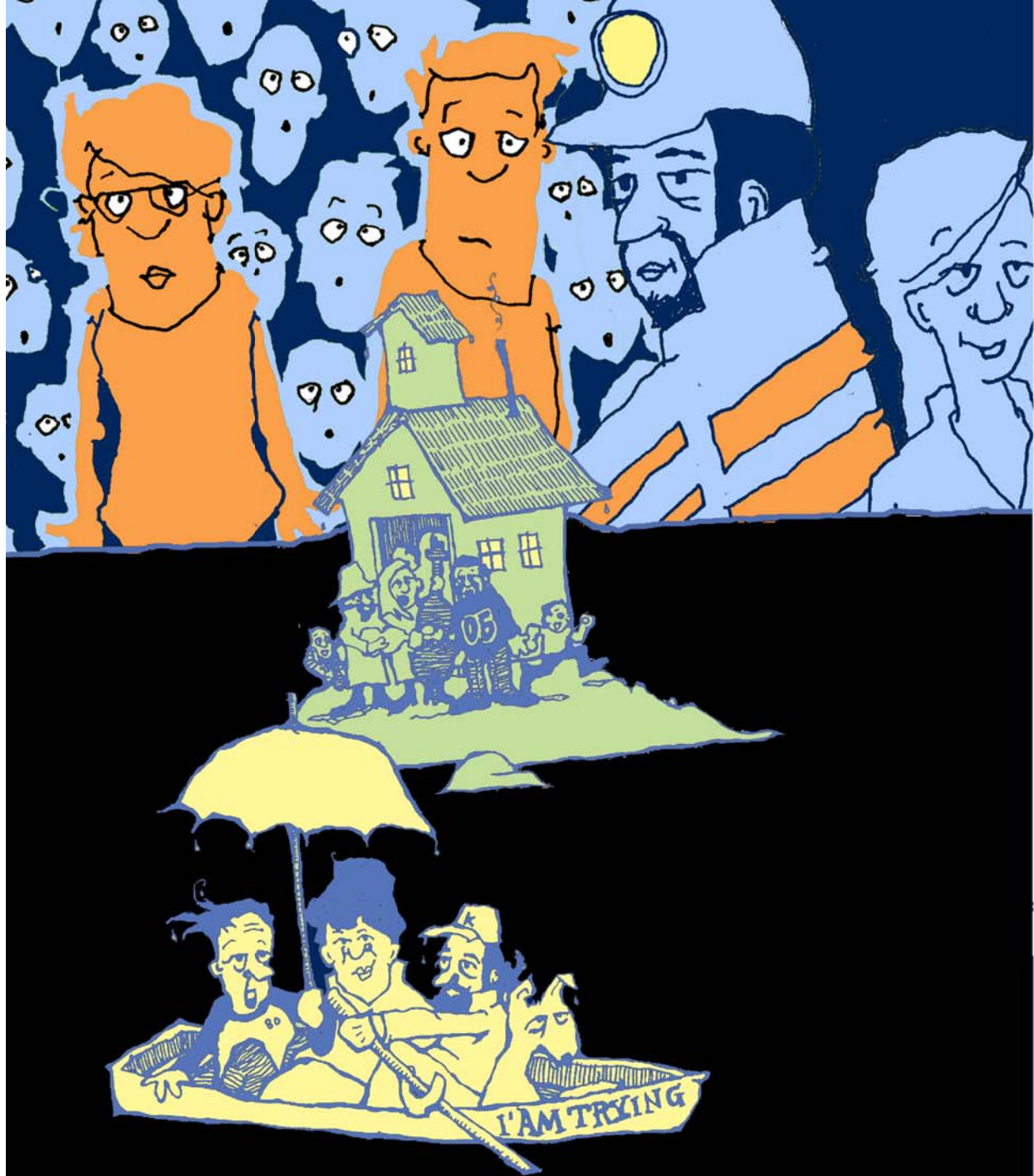
MICROFEST USA: KNOXVILLE / HARLAN COUNTY

reconnect | october 25-28, 2012

a two-state tour celebrating art and community

detailed festival schedule and registration info
WWW.ENSEMBLETHEATERS.NET
tickets start at \$5 (not including meals/housing)





HIGHER GROUND: THE MASH-UP

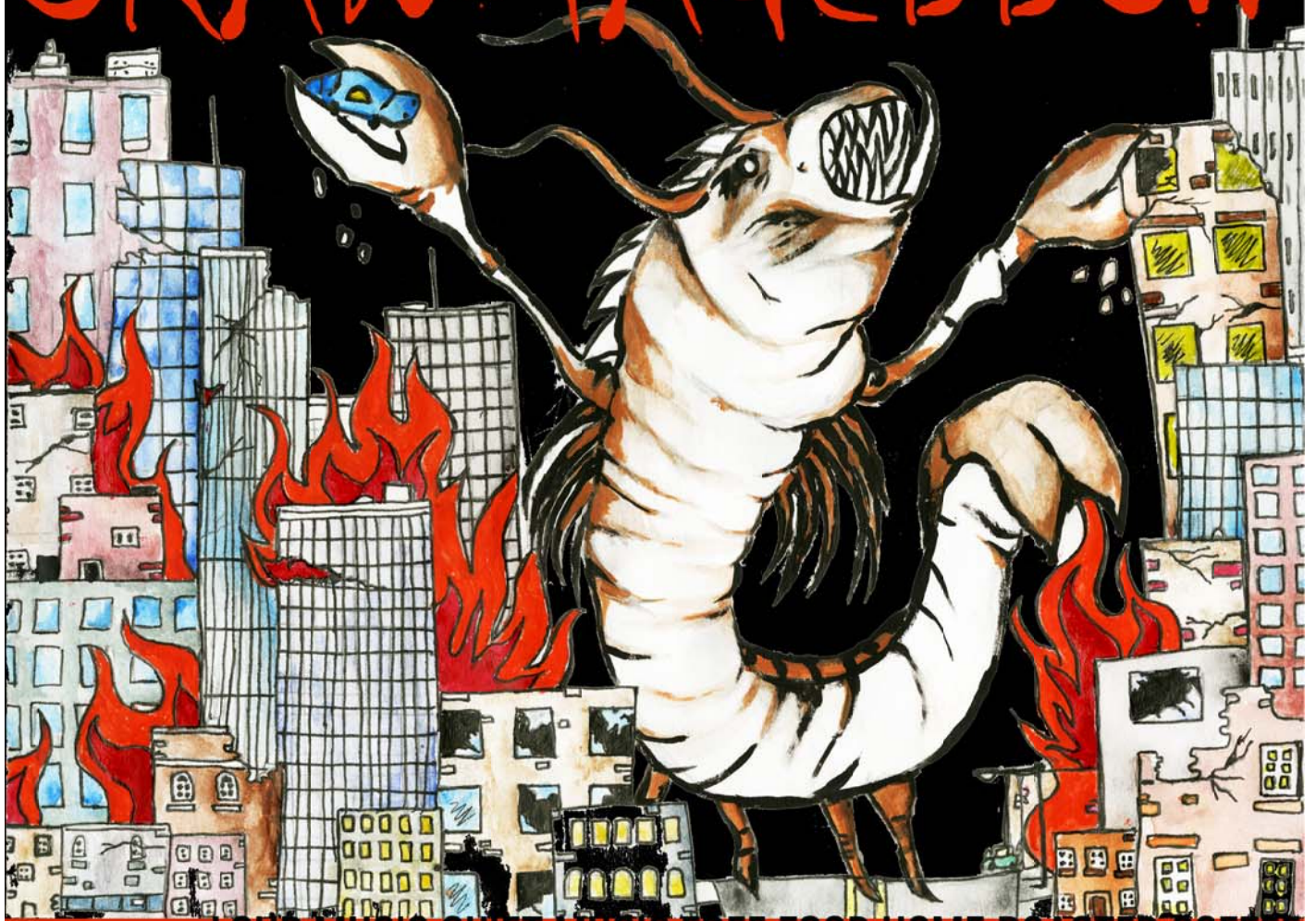
PARTS OF HIGHER GROUND, PLAYING WITH FIRE, & TALKING DIRT
ONE NIGHT, ONE STAGE **SATURDAY OCTOBER 27TH 2012 1PM**
GODBey APPALACHIAN CENTER, CUMBERLAND KENTUCKY
PART OF THE NETWORK OF ENSEMBLE THEATERS MICROFEST.
TICKETS \$5. CONTACT THERESA OSBORNE AT 606 589-3136
OR THERESA.OSBORNE@KCTCS.EDU TO RESERVE TICKETS.

PARTIAL FUNDING BY THE APPALACHIAN REGIONAL COMMISSION.





SATURDAY OCTOBER 27TH IS CRAWMAGEDDON



LOUD MUSIC QUIET MUSIC FREE FOOD HOME ROASTED COFFEE
COSTUMES PUPPIES ART FREE! SPONSORED BY YOUR FRIENDS
AT SOUTHEAST KENTUCKY COMMUNITY & TECHNICAL COLLEGE
GODBEY APPALACHIAN CENTER CUMBERLAND KENTUCKY
SATURDAY OCTOBER 27TH 4PM - 11PM

SCHEDULED TO APPEAR: SAMMY SALERNO CHARLES HALEY AT THE CROSSROADS
OH! DIVIDE OF THE SPHERES MIDNIGHT SUN REFLEX BULLDOG & FATTY
PLAYBOI ALL AS ONE DYING WITH A SMILE SWAMP FOX LETTERS & LIES

MOSH CLEAN

