

Through the Grapevine

Volume 1, Issue 1

October 1, 2012



Special points of interest:

- Meet the new students and faculty!
- Information about joining WCA, TCA, and ACA
- Ways to get involved
- Fundraising Ideas
- Love Your Body
- National Coming Out Day
- Zumbathon

Inside this issue:

Join WCA	2
Praxis Exam	2
TCA Conference	2
Love Your Body	3
Coming Out	3
Join ACA	3
CSI Committees	4

Welcome New Counseling Students!

Megan Fox	Jamie Collier	Brittany Jones
Jessica Malone	Emily Mcglothlin	Bree Nelson
Jodi Bradford	Samantha Bartee	Kristin Lazarova
Julie Beyerdorf	Ashley Dickson	Megan Hrivnak
Roela Redd	Lauren White	Erika Curtis
Seth Johns	Kayla Mills	Patricia Coble
Ana Hill	Vicki Underwood	Edie Miller
Zachary Nave	Kayla Tatum	Alonna Donovan
Charli Byrd	Andrew Baker	Carolyn Guari
Yordin Robinson	Ellen Stroud	James Morrill
Christina Jidman	Kristen Gratz	
Scott Judson		

Faculty Spotlight- Dr. Elizabeth Likis-Werle

Dr. Likis-Werle received her undergraduate in psychology at Wofford College in Spartanburg, SC and her Master's in Community Counseling at Western Carolina University in Cullowhee, NC. She later received her North Carolina LPC in 2000. She has been fortunate to have multiple rich experiences in counseling children, adolescents, and adults in many settings. She spent six years in Community Mental Health doing intensive in home family counseling and intensive outpatient. She worked two years in the schools and

seven years in a college/ student affairs counseling setting.

Most recently, she has been focusing her work and research on substance abuse, trauma, and media influence of risky behaviors. She went back to school at the University of North Carolina at Greensboro and finished her doctoral program this year and earned a certificate in Women's and Gender Studies as well.

Her dream is to be on a trivia game show and if she was to choose an alternate career she would pursue acting or financial planning. Dr. Likis-Werle currently has an interest in developing a service learning/ cultural immersion trip as part of our counseling program and is seeking out students who have ideas or interest.

Welcome to the program Dr. Likis-Werle! We are happy to have you!

Join WCA!

The Watauga Counseling Association is a chapter of Tennessee Counseling Association that provides mental health professionals social and professional networking opportunities, professional development, and much more. As a member, you receive the opportunity to meet area professionals, attend the annual spring workshop, and reduced fees for the TCA conference and much more!

Students can join TCA and WCA for only **32.50!**

Next meeting is Tuesday, November 13, 2012 at 6:00. Location and speaker TBA.

For more information or to join go to www.tncounselors.com and click Join TCA.

School Counselors -

Have you taken the Praxis?

All School Counselors must take the counseling portion of the PRAXIS II exam in order to be eligible for licensure. As of September 2012, the code changed to 0421, professional school counseling. Be sure to register for the correct test and identify ETSU as score recipient.

The fee for the test is currently \$115.00 and takes two hours to complete. The test is offered on the following dates: September 22nd, November 3rd, January 26th, April 13th, June 6th, and July 20th. Applications for the PRAXIS II are obtained in room 321 Warf Pickle.

Additional information including practice tests and study materials can be found at www.ets.org.

55TH ANNUAL TCA 2012 CONFERENCE

November 17-20, 2012

COUNSELING AS MUSIC

FACILITATING HARMONY FOR MIND, BODY, AND SPIRIT

Sheraton Nashville

DOWNTOWN

623 UNION STREET

NASHVILLE, TN 37219

615-259-2000



Ready for a break?

Fall Break is

October 15-16th

It's not too late to join TCA and register for the annual conference!

Take advantage of the opportunity to gain professional development, network with fellow counselors in the area, gain insight on new theories and procedures, and much more.

Several students in the program as well as our faculty will also be presenting on a variety of topics.

For more information on how to join and register, go to www.tcaconference2012.com

Love Your Body Day

October 30th 10:00am- 2:00 pm

ETSU D.P. Culp Ballroom (Center)

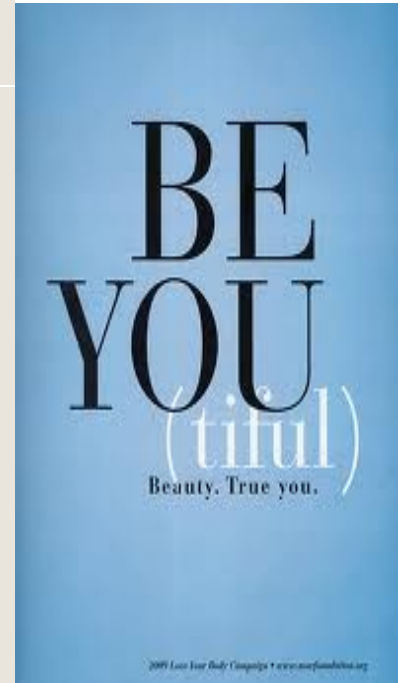
Hosted by: Oasis and The Wellness Committee

Love your body day is a nationally recognized event that promotes appreciation of a person's body exactly how it is. Booths will be set up throughout the Ballroom of the D.P. Culp University Center. Participants will have access to a variety of interactive information booths, activities, and free giveaways from wellness-inspired vendors.

For more information contact:

Jennifer McGhee, 423-439-4841

Email: oasis@etsu.edu



National Coming Out Day

National Coming Out Day is held on October 11th every year to commemorate the march on Washington organized by and for the LGBT people and allies. The march took place on October 11, 1987 and highlighted the LGBT struggle for acceptance and equality. The following year, 1988, marked the first National Coming Out Day. Developed by the Human Rights Campaign, The Coming Out Project assists LGBT people in living their lives openly and speaking freely about support for equality at home, work, and in the community. For more information check out the website at <http://www.hrc.org>.

Join in and support locally at ETSU's National Coming Out Day Ceremony and Candlelight Vigil. During this ceremony, individuals will remember and speak about those who have gone on, those who continue to have courage to speak out for what they believe is right. Expect to enjoy poetry, speakers, and musical entertainment.

Where: ETSU D.P. Culp University Center

When :October 9, 2012 7:30-9:30

For more information go to www.etsu.edu/students/multicult



ACA 2013

Annual Conference & Exposition

Cincinnati, Ohio
March 20-24, 2013

Students can join ACA for \$93.00

Register for the conference before December 15 and get the student rate of \$265.00!

Don't miss out on the opportunity to network with more than 4,000 professional resources at the largest expo dedicated to counsel-



Graduate Student Success Service

Feeling Overwhelmed?

Having trouble juggling your time?

Want help finding campus or community resources?

Contact your Graduate Success Specialist: Beth Evelyn Barber

B12 A Burgin Dossett Hall

Email: gradsuccess@etsu.edu

Phone: 423-439-7062

Office Hours:

Monday 10:00 am- 12:30 pm

Tuesday, Wednesday & Thursday 1:00-3:00 pm

Also by appointment

Support Breast Cancer Awareness

While Burning Calories

Kappa Epsilon from Bill Gatton College of Pharmacy is sponsoring a Zumbathon.

2 full hours of Zumba!

\$5.00 Donation requested per hour

ALL proceeds go to Susan G Koman for Breast Cancer

Where: CPA @ ETSU

When: Saturday, October 6, 2012

11:00 am-1:00pm

Everyone must sign a waiver before participating.



Got to make money to spend money!

Chi Sigma Iota is looking for fundraising opportunities. If you have any suggestions, please contact:

Clanci Tipton

Email: zcjc40@goldmail.etsu.edu

Get Involved! Join a CSI Committee

Chi Sigma Iota is looking for volunteers for various committees. By creating committees CSI hopes to accomplish more this year by spreading out the work load.

We are currently looking for students to be apart of the following committees.

- Outreach
- Fundraising
- Professional Development
- Personal Development
- Membership

Please contact Kayla Perkins at zkaw20@goldmail.etsu.edu to volunteer .

Through The Grapevine

Questions?

Comments?

Suggestions?

Email: Clanci Tipton at zcjc40@goldmail.etsu.edu