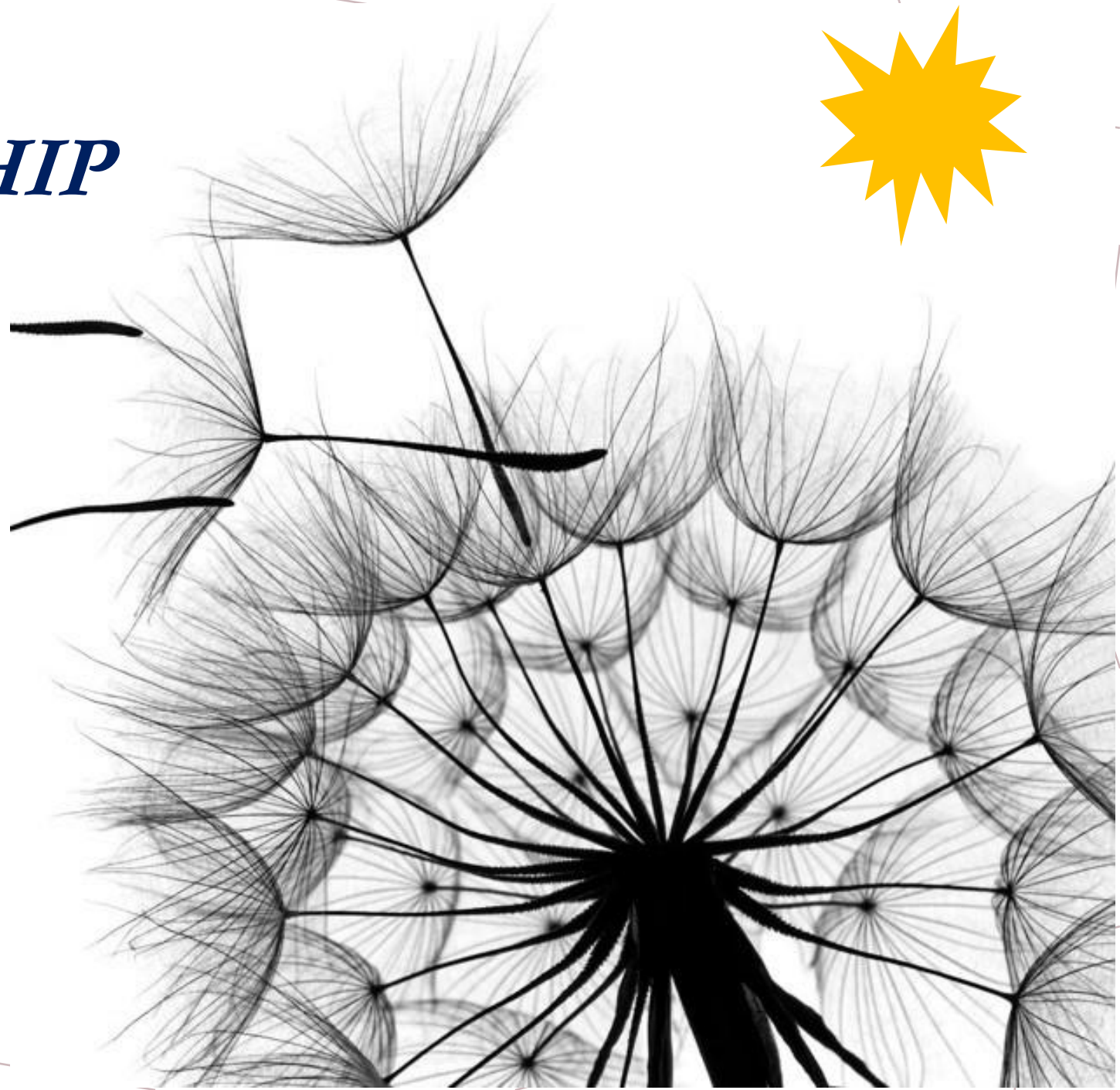
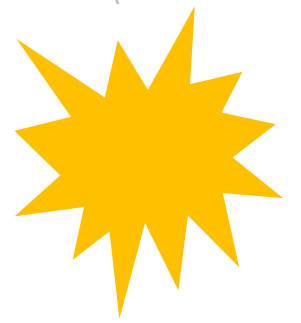


ETSU STEWARDSHIP OF PLACE

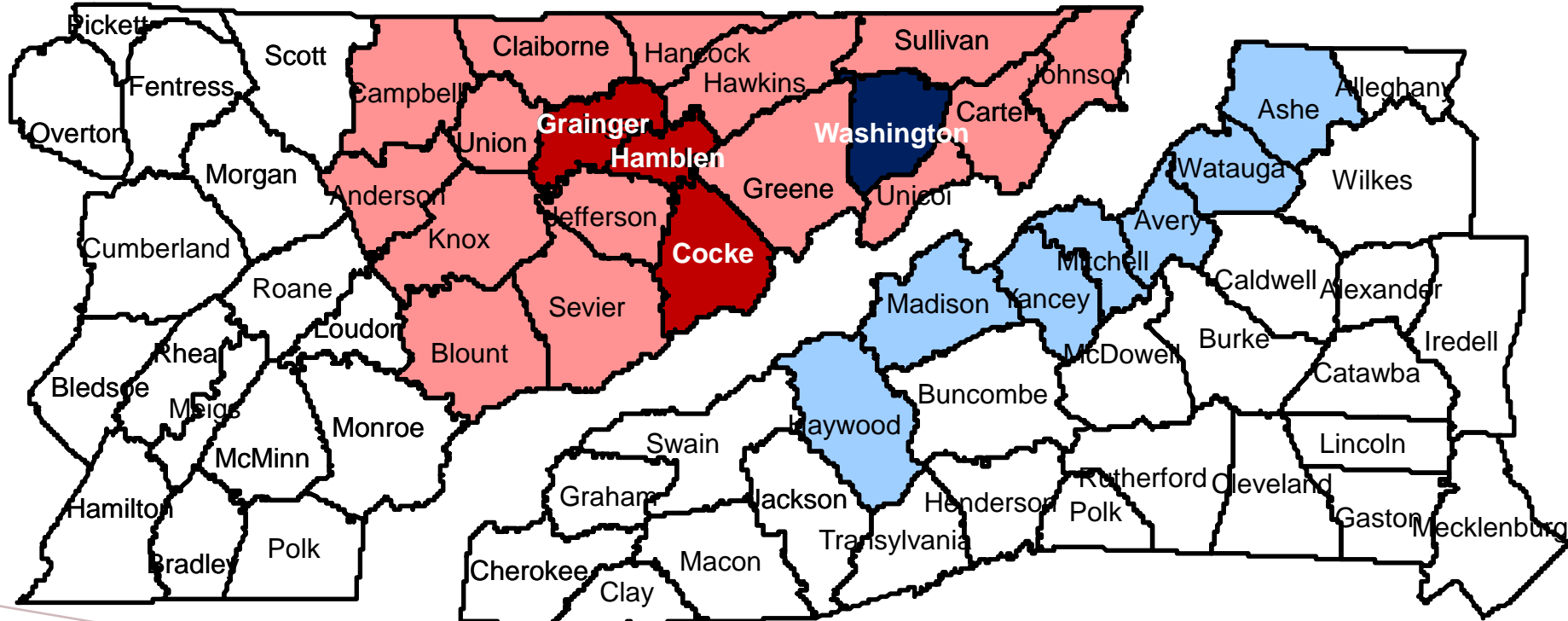
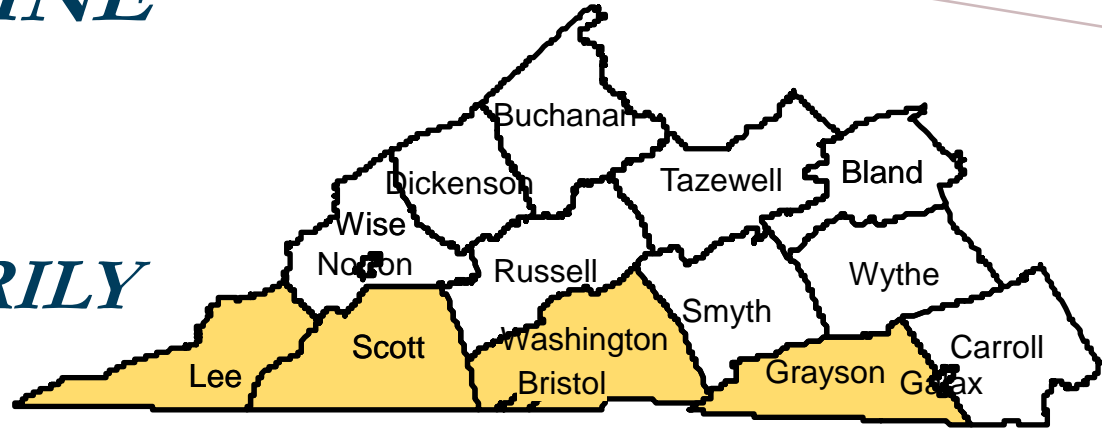
**SPOTLIGHT ON
COCKE, GRAINGER,
HAMBLEN COUNTIES**

May 2021



THE EDUCATION PIPELINE LEADING TO ETSU

REGION-COUNTIES PRIMARILY SERVED



First-Time Freshmen – 68%

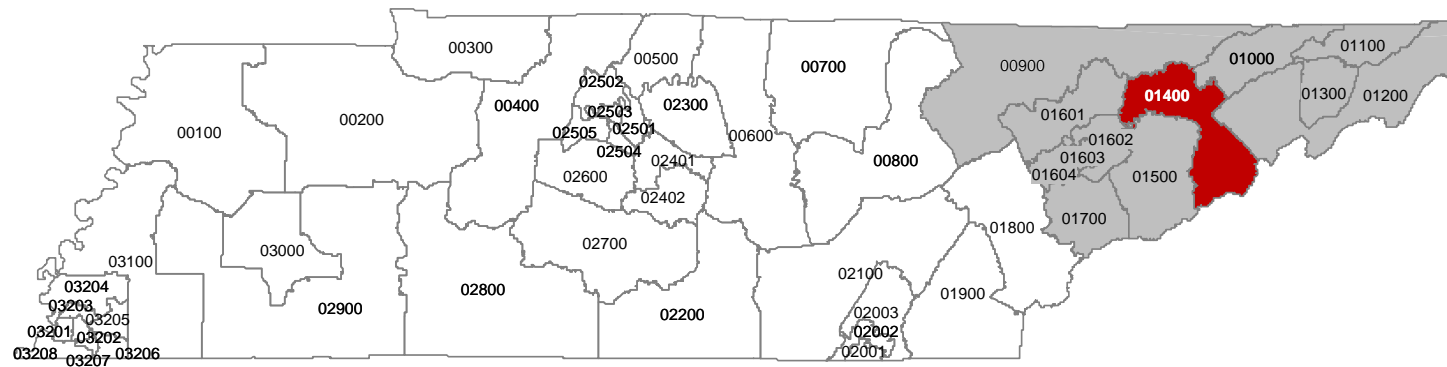
All Undergraduates – 74%



Combined Public Use Microdata Areas (PUMAs) for ETSU Region

Lowest Unit of Analysis for Most U.S. Census Bureau Data

| PUMA | County and City |
|------|--|
| 900 | Campbell, Claiborne, Scott, Morgan & Hancock Counties |
| 1000 | Hawkins & Sullivan (Northwest) Counties--Kingsport City |
| 1100 | Sullivan County (Southeast)--Bristol City |
| 1200 | Greene, Carter, Unicoi & Johnson Counties |
| 1300 | Washington County--Johnson City |
| 1400 | Hamblen, Cocke & Grainger Counties |
| 1500 | Sevier & Jefferson Counties |
| 1601 | Anderson, Union & Knox (North) Counties--Oak Ridge (East) & Clinton Cities |
| 1602 | Knox County (East) |
| 1603 | Knoxville City |
| 1604 | Knox County (West)--Farragut Town |
| 1700 | Blount County |

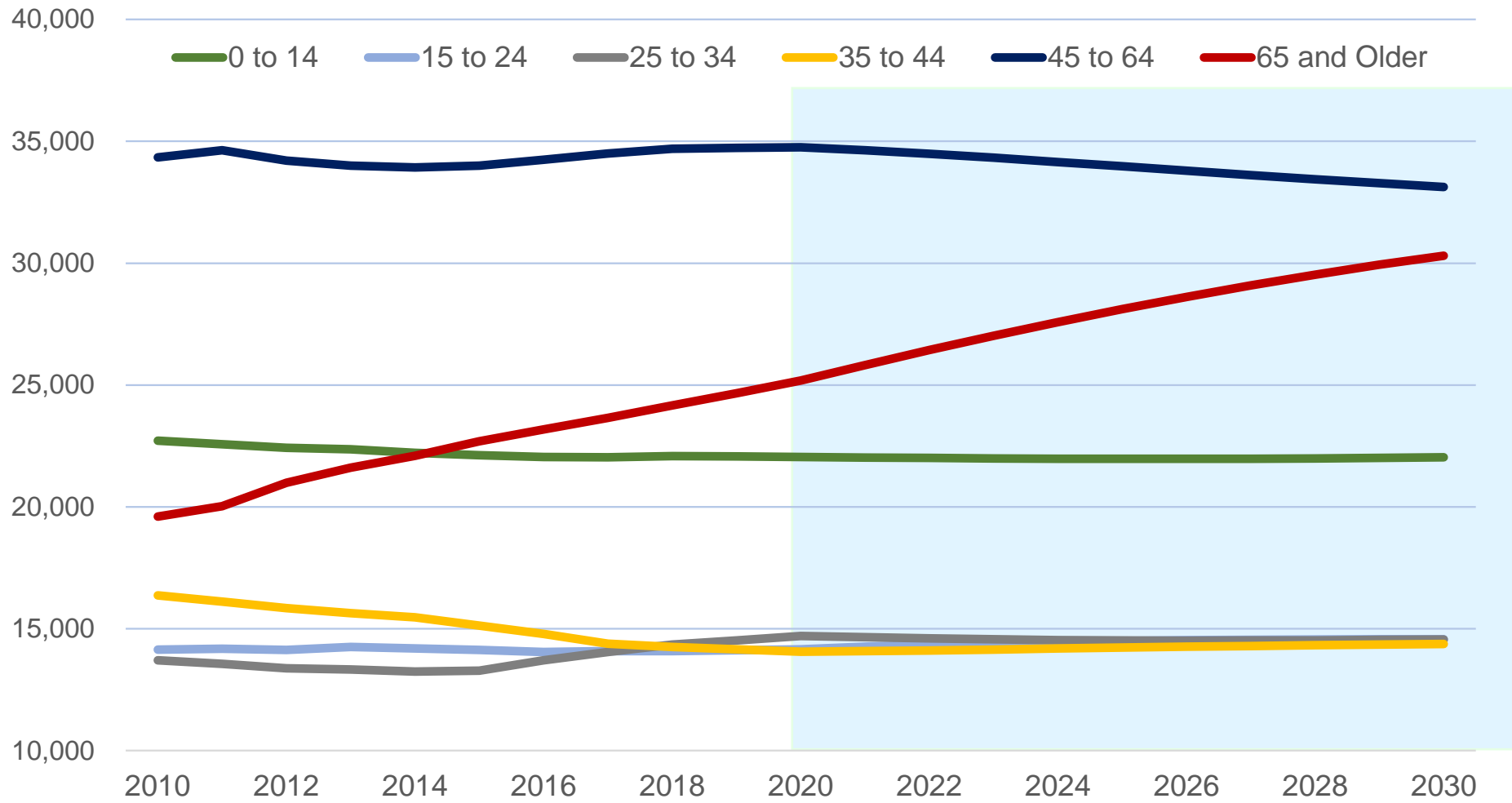


POPULATION

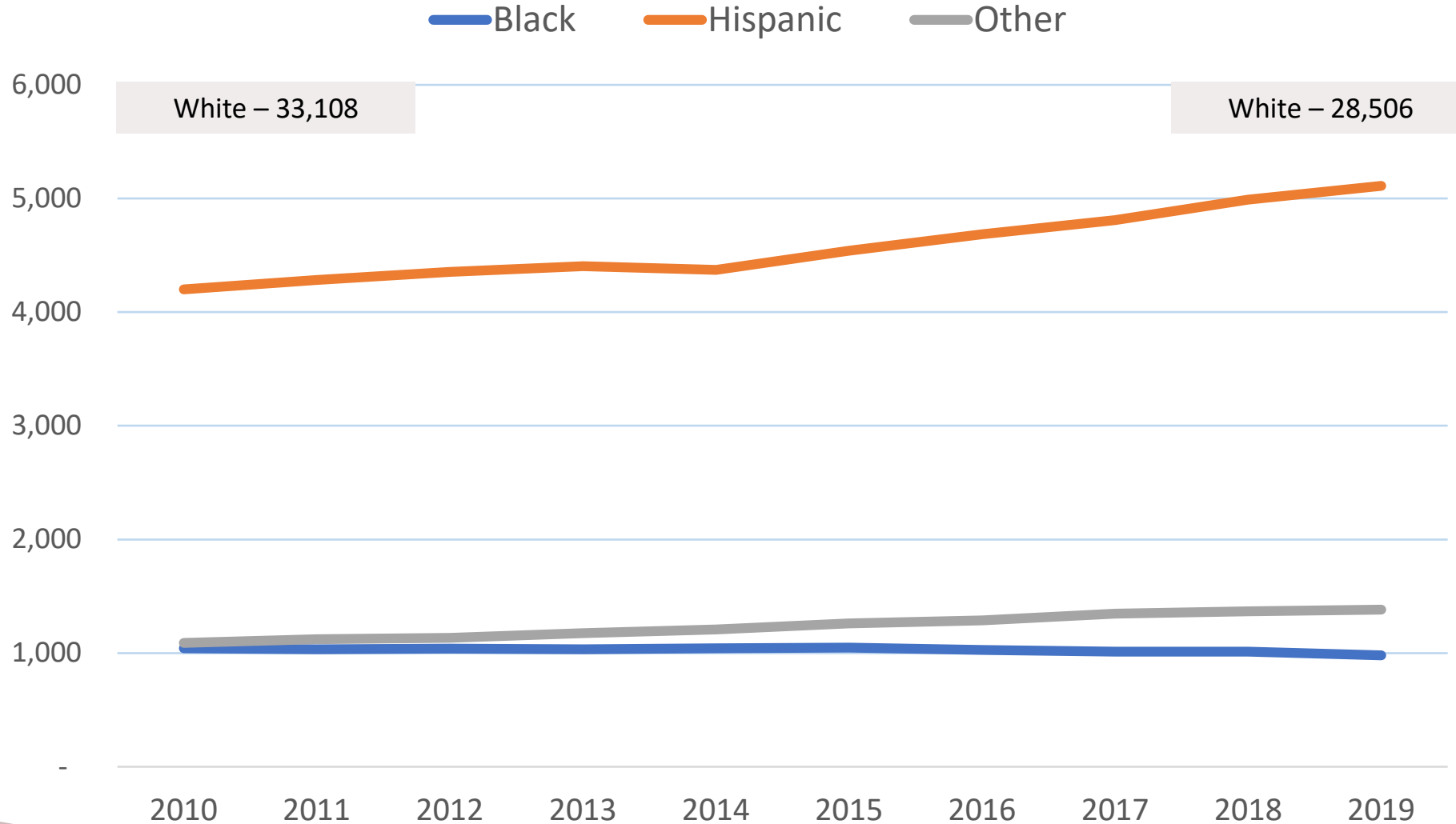


POPULATION CHANGE BY AGE-GROUP

COCKE, GRAINGER, HAMBLLEN COUNTIES 2010 TO 2030

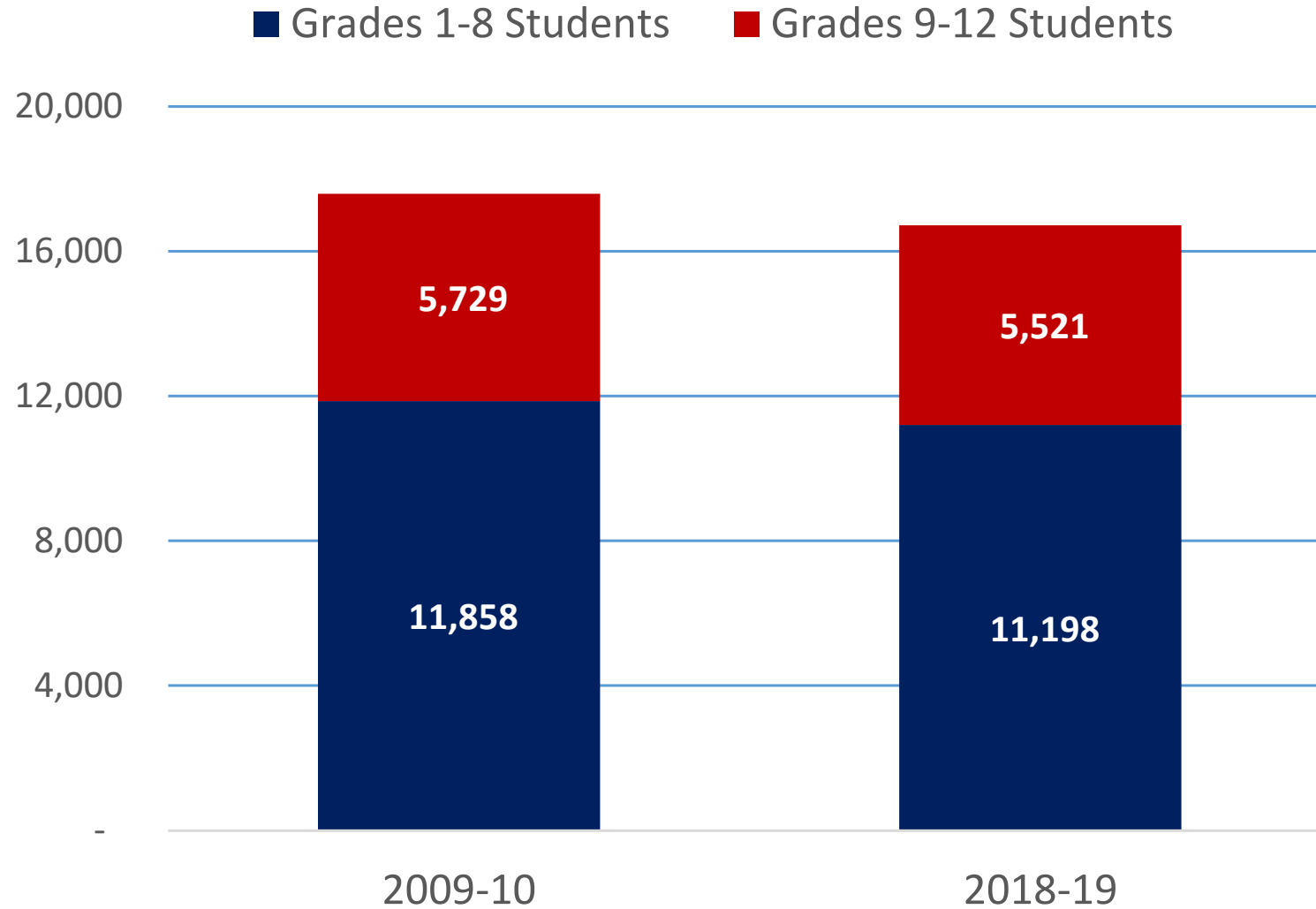


POPULATION ESTIMATES OF MINORITIES – AGE 0 TO 24 COCKE, GRAINGER, HAMBLLEN COUNTIES (2010 TO 2019)



CHANGE IN K-12 ENROLLMENT

***COCKE,
GRAINGER,
HAMBLLEN
COUNTIES***

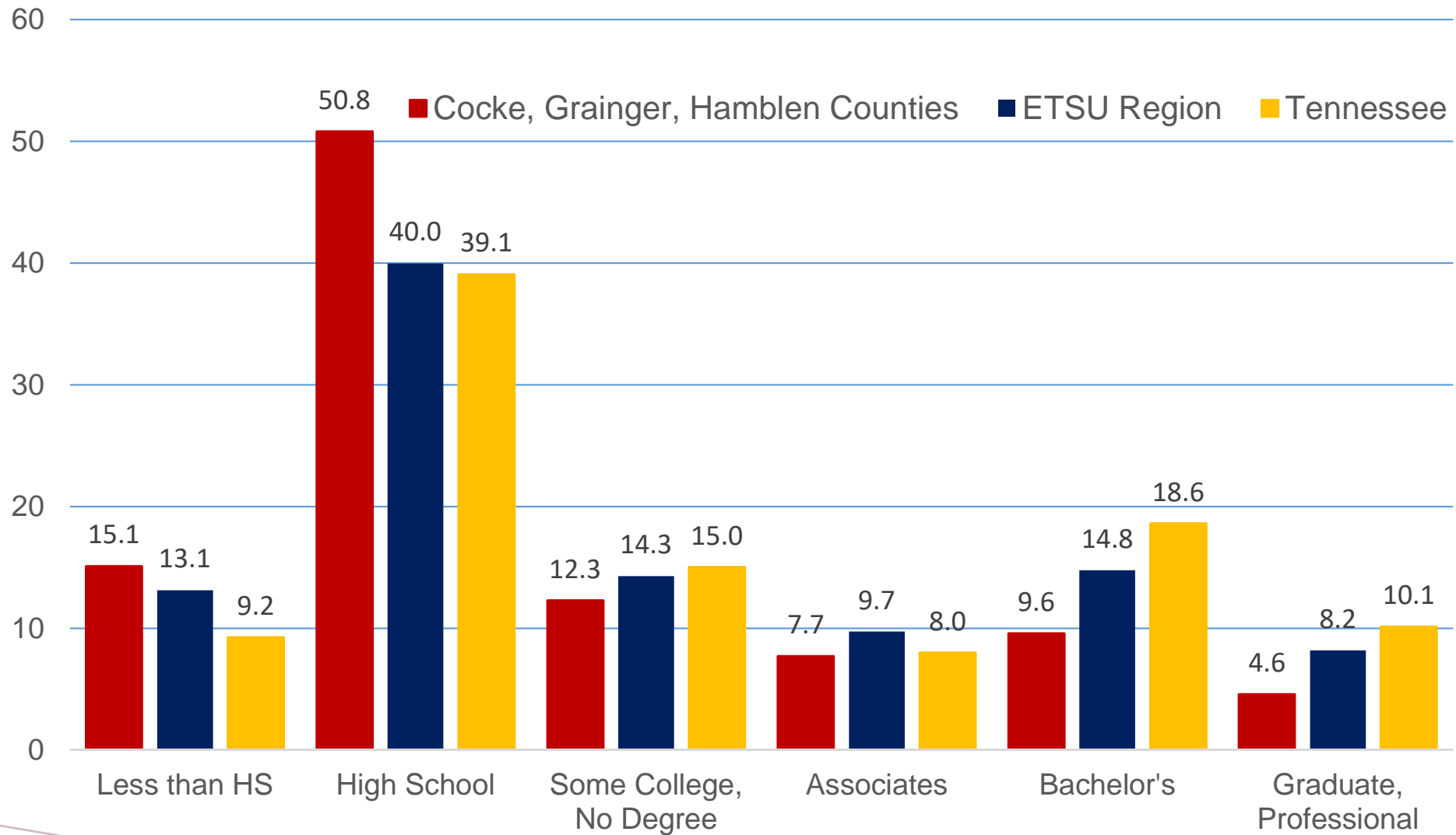


EDUCATION



EDUCATIONAL ATTAINMENT OF 25 TO 64 YEAR OLD'S

COCKE, GRAINGER, HAMBLLEN COUNTIES, ETSU REGION, TN (2019)

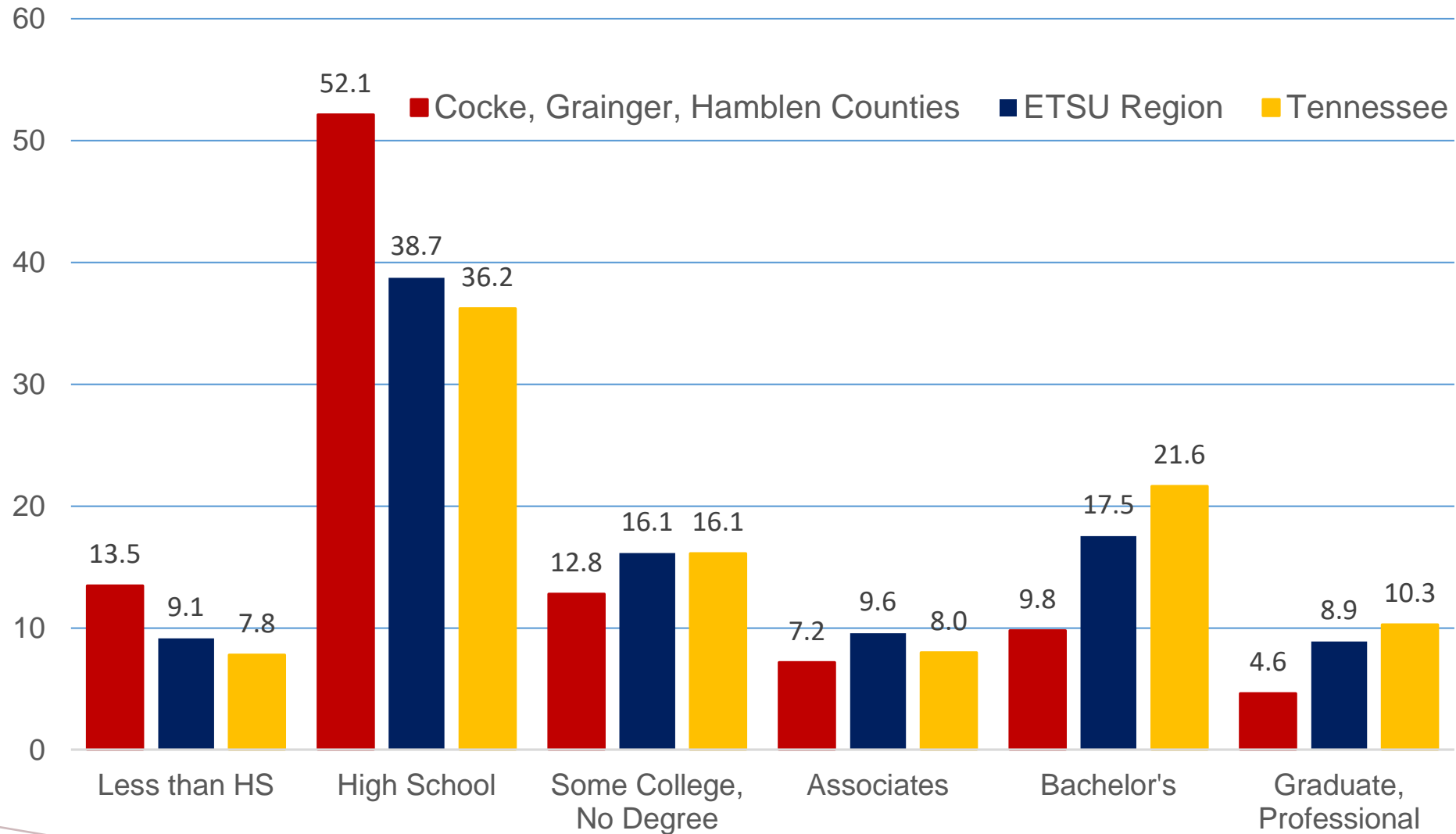


Source: U.S. Census Bureau, American Community Survey Public Use Microdata Samples



EDUCATIONAL ATTAINMENT OF 25 TO 39 YEAR OLD'S

COCKE, GRAINGER, HAMBLEN COUNTIES, ETSU REGION, TN (2019)

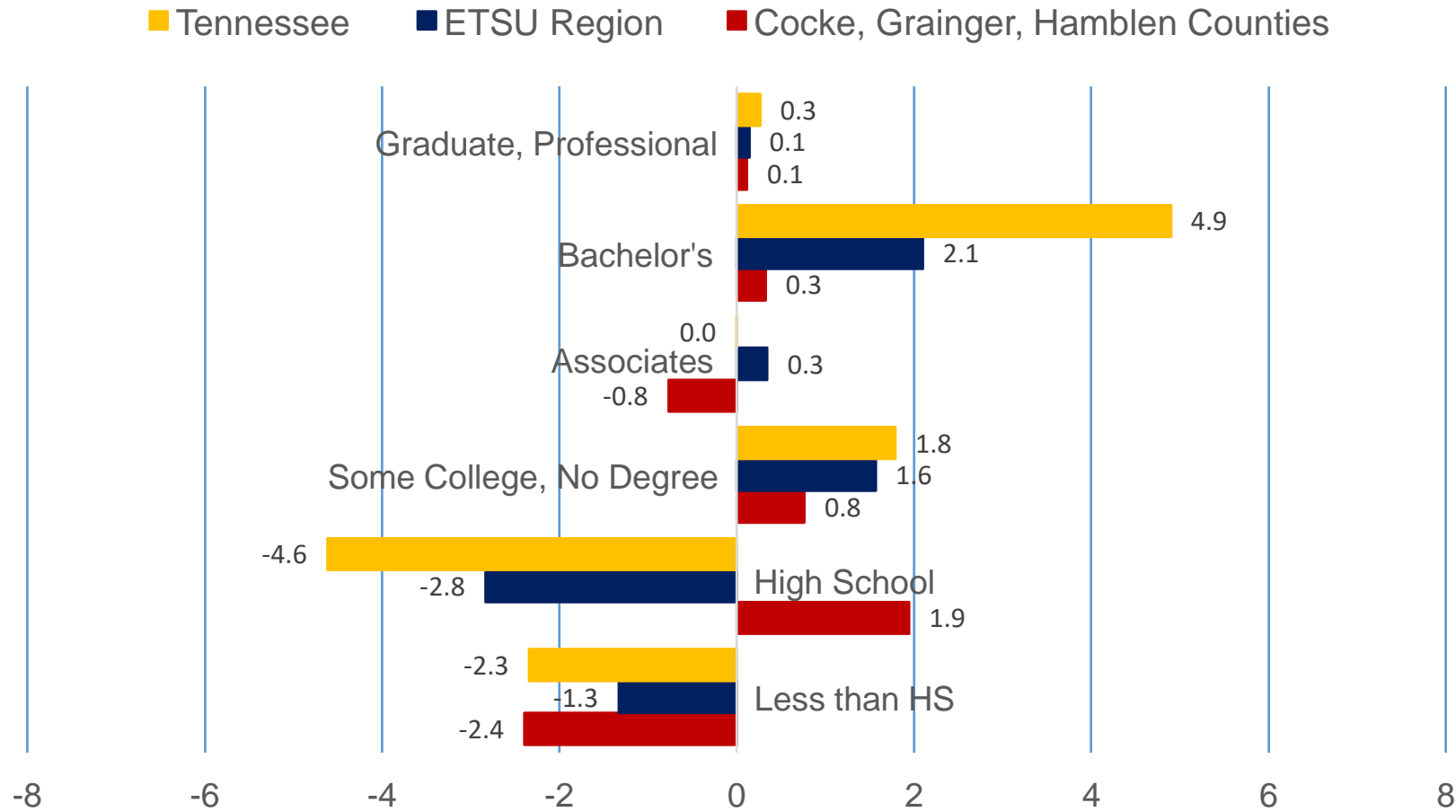


Source: U.S. Census Bureau, American Community Survey Public Use Microdata Samples

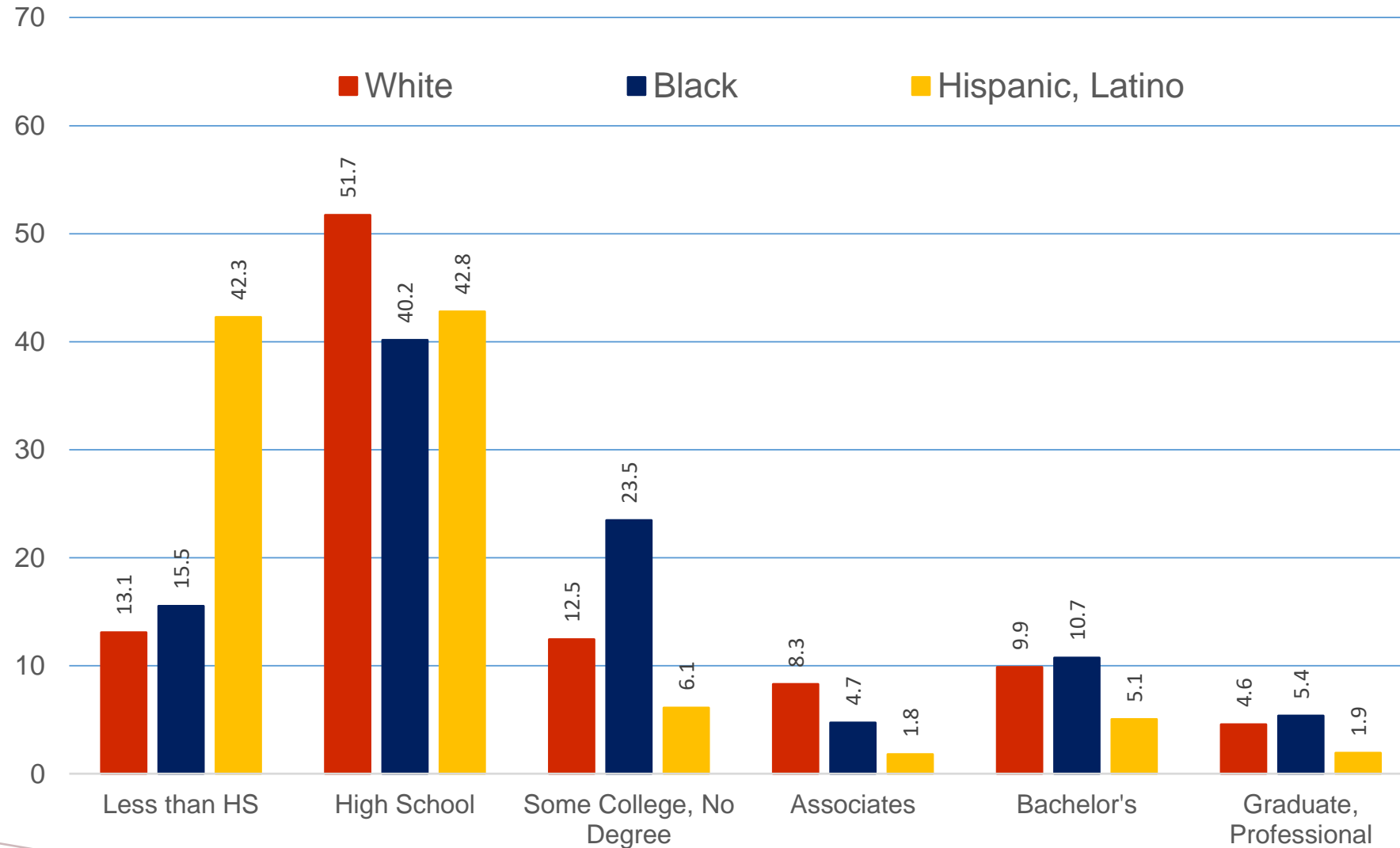


PERCENTAGE CHANGE IN EDUCATIONAL ATTAINMENT FROM YOUNG (AGED 25 TO 39) TO OLDER (40 TO 64)

COCKE, GRAINGER, HAMBLLEN COUNTIES, ETSU REGION, TN (2019)



EDUCATIONAL ATTAINMENT OF 25 TO 64 YEAR OLD'S BY RACE/ETHNICITY – COCKE, GRAINGER, HAMBLLEN COUNTIES (2019)



Source: U.S. Census Bureau, American Community Survey Public Use Microdata Samples

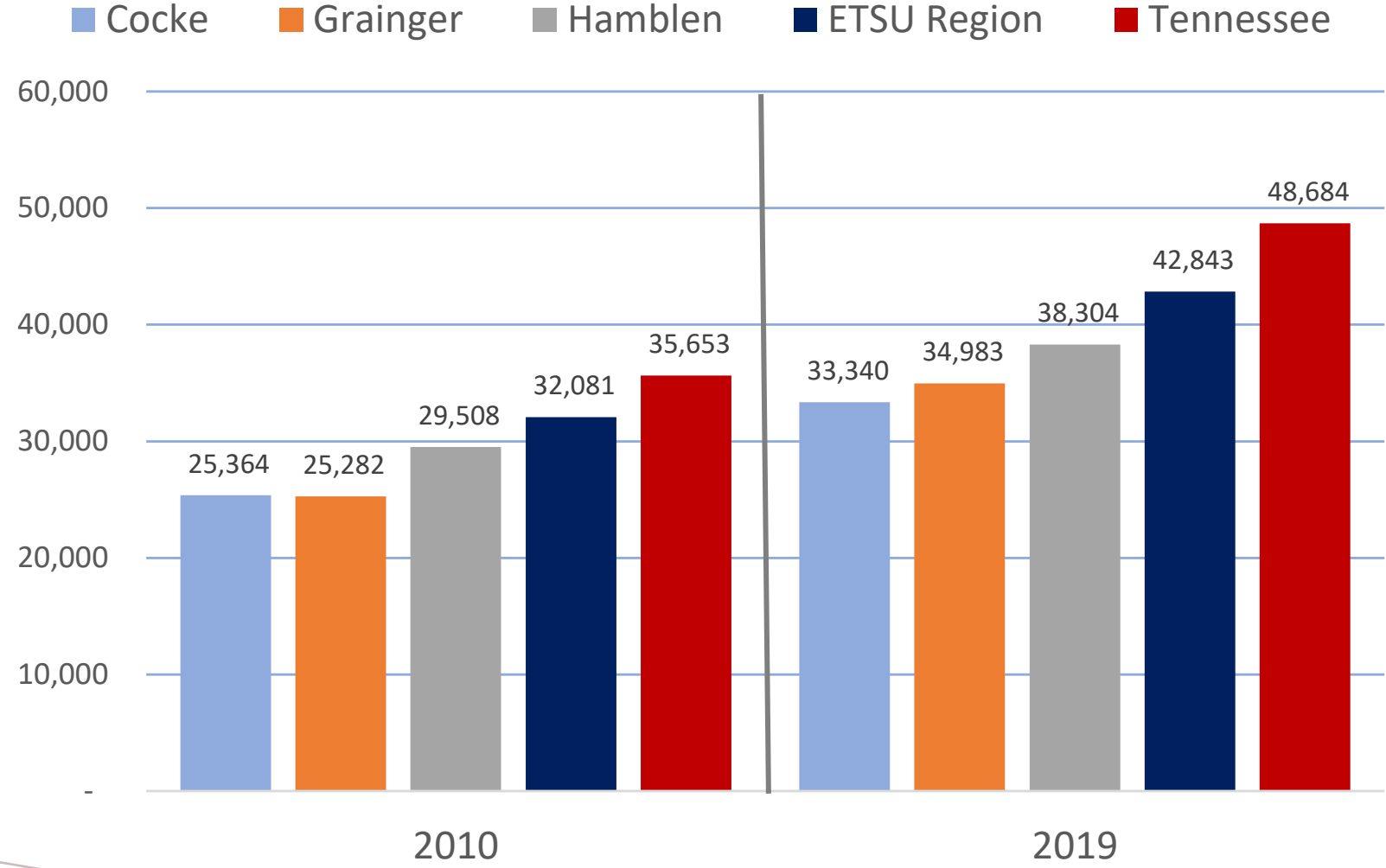


EMPLOYMENT AND WORKFORCE



PERSONAL INCOME PER CAPITA

COCKE, GRAINGER, HAMBLLEN COUNTIES, ETSU REGION, TN

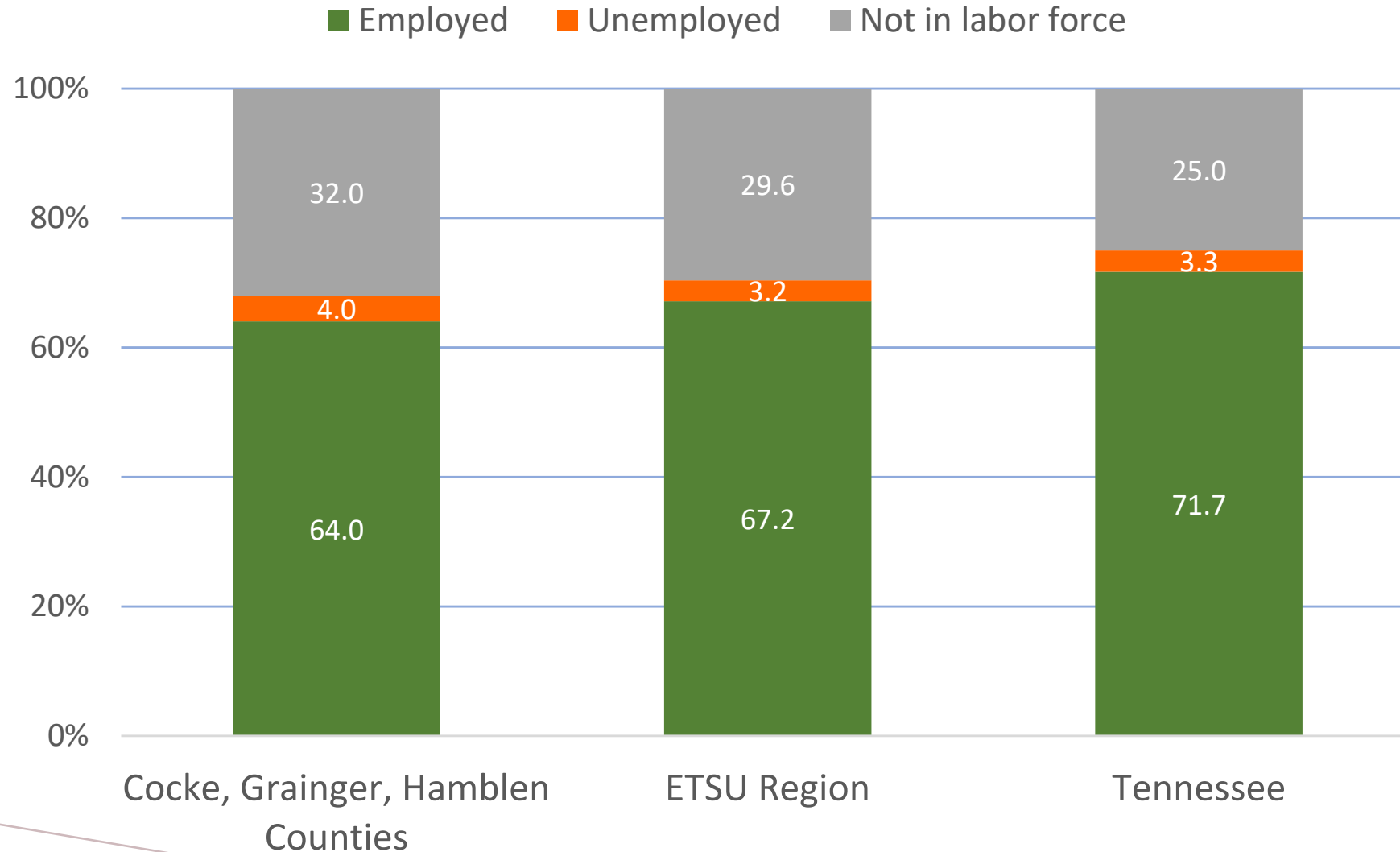


Source: U.S. Bureau of Economic Analysis



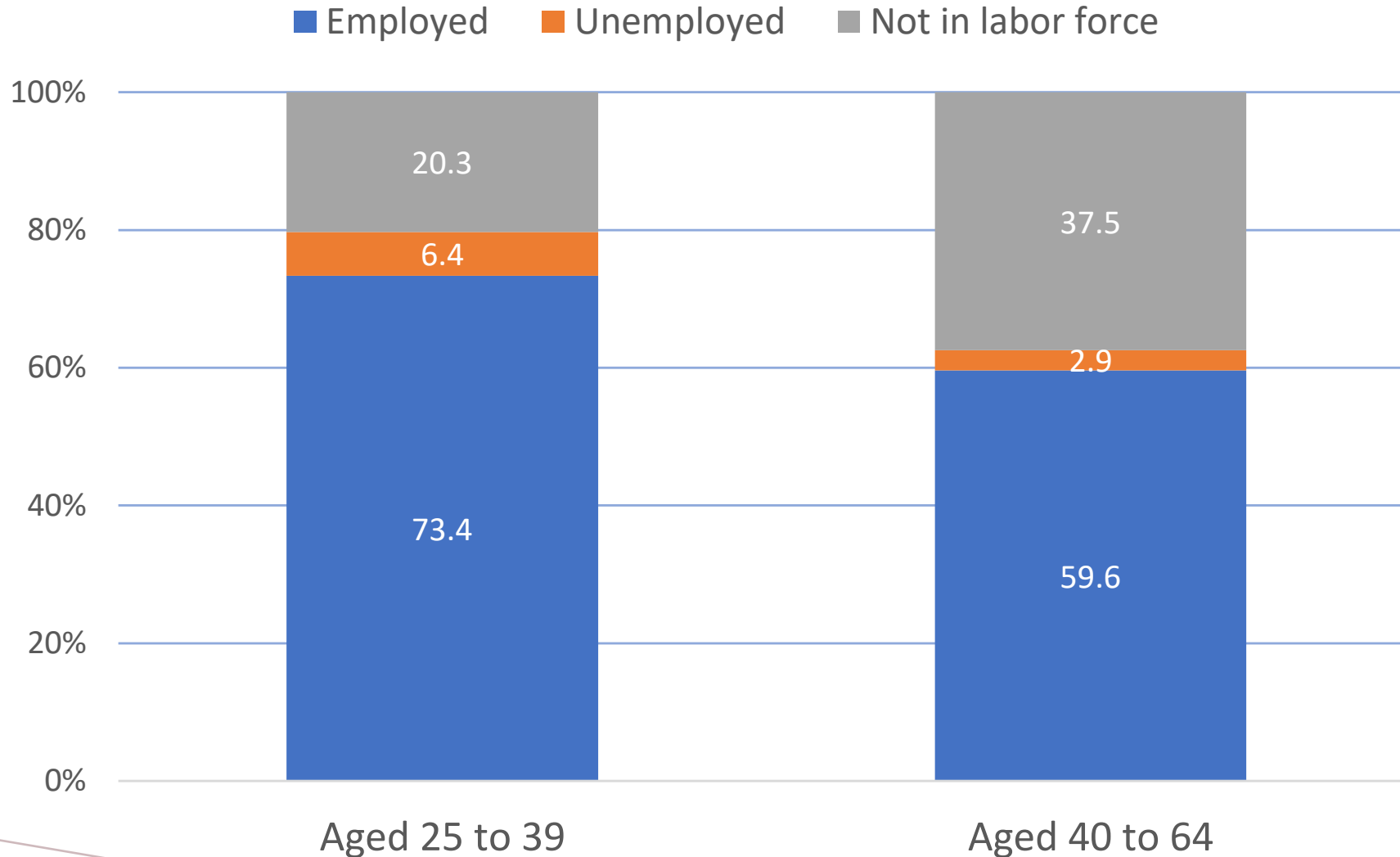
EMPLOYMENT STATUS (2019)

COCKE, GRAINGER, HAMBLLEN COUNTIES, ETSU REGION, TN



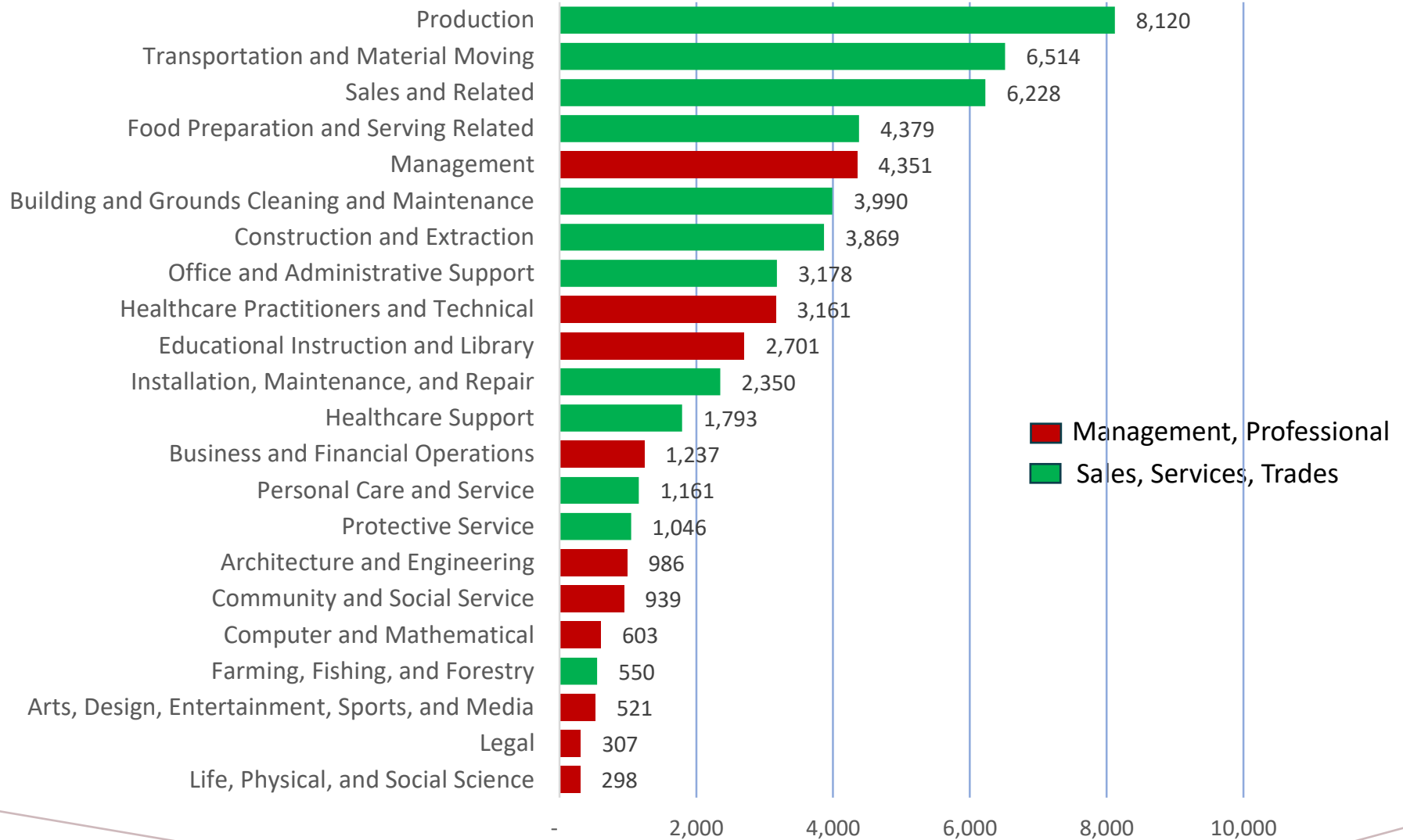
EMPLOYMENT STATUS BY AGE-GROUP (2019)

COCKE, GRAINGER, HAMBLLEN COUNTIES



OCCUPATIONS OF 25 TO 64 YEAR OLD'S

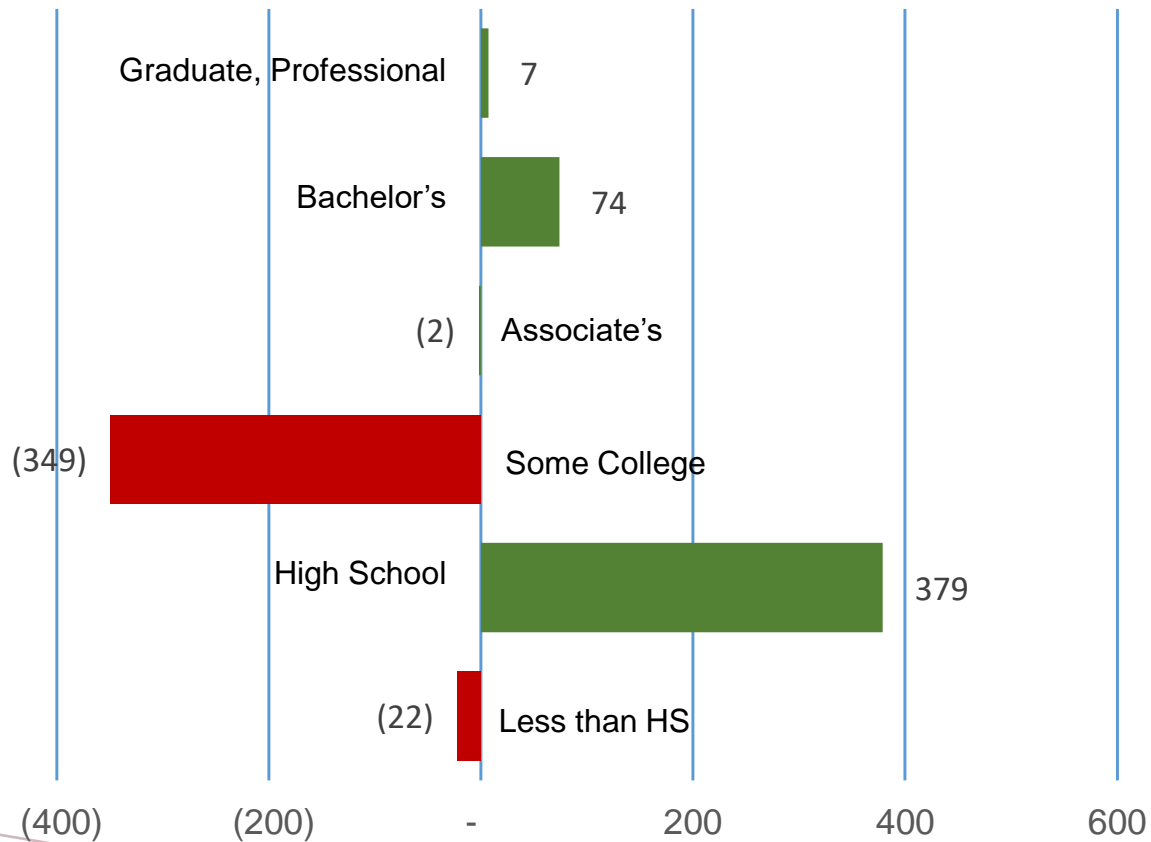
COCKE, GRAINGER, HAMBLLEN COUNTIES (2019)



ANNUAL NET MIGRATION OF 25 TO 64 YEAR OLDS

COCKE, GRAINGER, HAMBLLEN COUNTIES (2015-2019)

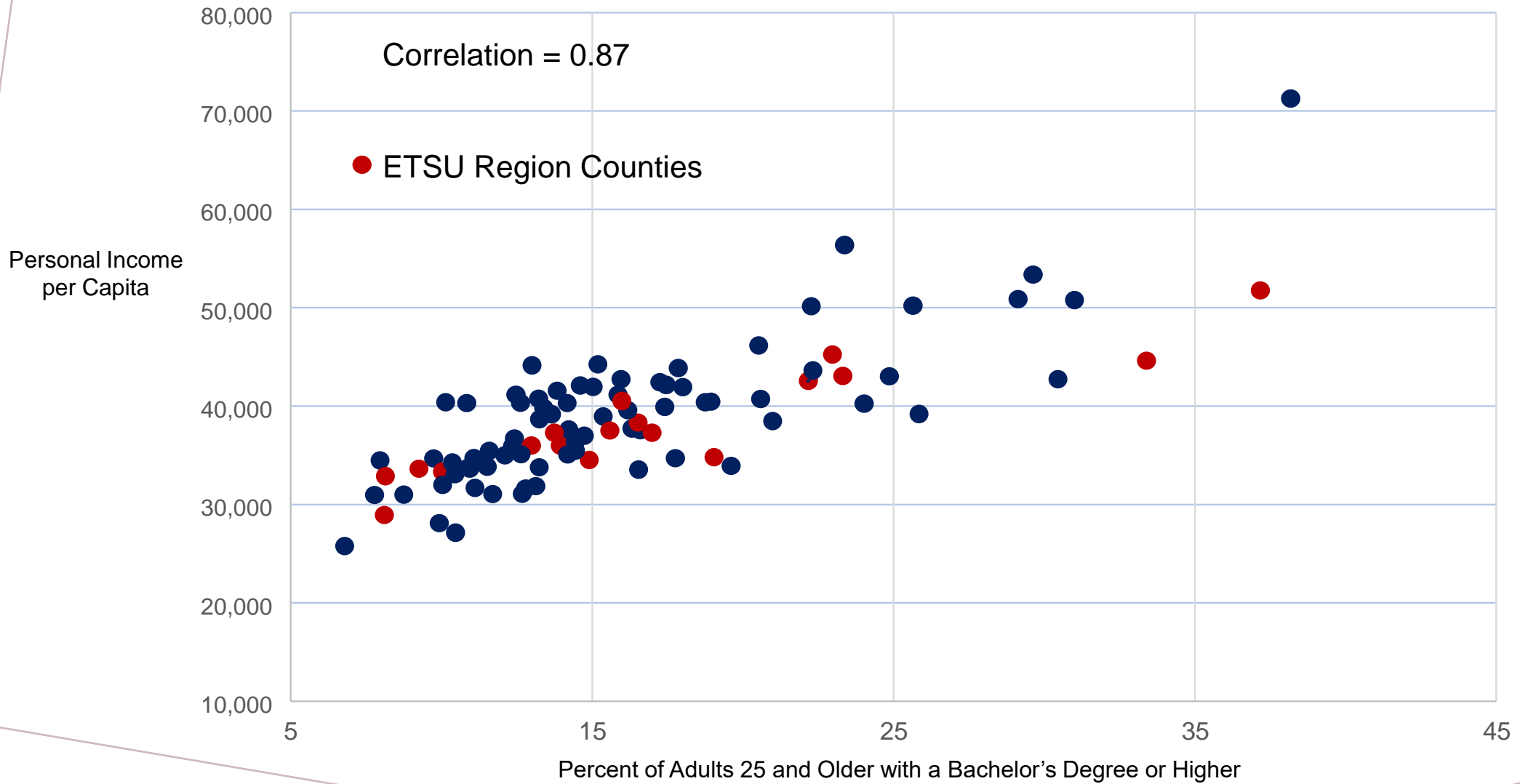
By Level of Education



By Occupation



RELATIONSHIP BETWEEN COLLEGE ATTAINMENT AND PERSONAL INCOME – TN COUNTIES (2019)



Source: U.S. Bureau of Economic Analysis, U.S. Census Bureau – American Community Survey

