



# Family Weekend<sup>2025</sup>

September 26 - 28



Campus  
Map

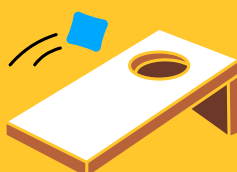
## Full Weekend Pass Holder Schedule of Events

### Weekend Signature Events



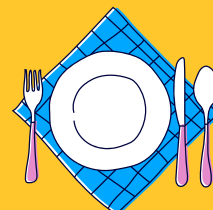
#### Family Welcome Reception

5:00pm-6:30pm, Friday  
Start family weekend with a family-friendly welcome reception. Drop-in when you're ready to meet and greet with other families and university faculty & staff.



#### Family Weekend Tailgate

2:30pm-5:00pm, Saturday  
Kick off game day at the Family Weekend Tailgate! Enjoy BBQ from a local favorite, The Firehouse! Music, yard games & fun! We'll have door prizes, too!



#### Farewell Brunch

10:00am-12:00pm, Sunday  
Goodbyes can be hard. Enjoy brunch with your student in the ETSU Dining Hall. Complete your Family Weekend experience with this drop-in event.

### Ongoing Activities

*Check Websites for Hours of Operation*



#### ETSU Book Store

First Floor DP Culp Student Center  
Friday 8:00am - 4:30pm  
Saturday 10:30am - 5:00pm  
Stop by for your Buccaneer gear, textbooks, supplies, and gifts for the whole family.



#### Laurel's Pumpkin Barn

303 Laurel's Road, Johnson City  
Visit a log cabin over 100 years old, re-constructed into the "Pumpkin Patch Store." First 50 guests will receive a FREE Pie Pumpkin - great for painting!



#### ETSU Walking Trails

Experience the beauty of campus along the more than five miles of ETSU walking trails!



#### Center for Physical Activity (CPA)

Basler Center for Physical Activity (CPA) is the home of Campus Recreation. Feel free to tour and utilize this beautiful facility including the pool and climbing wall (specific hours). Student must be present for family members to attend. Age restrictions may apply, see website for details.



#### Annual Johnson City Stop & Shop

Explore Johnson City this weekend! Your Family Weekend Pass gets you perks all weekend long! Participating businesses offer special discounts to our Family Weekend pass holders!

*Have your Family Weekend Pass Available to Show at Events Throughout the Weekend*

# Friday, September 26

## Registration Check-In

**Pick up your family weekend pass**

11:30am - 4:30pm

Welcome Center - 2<sup>nd</sup> Floor, DP Culp Center

5:00pm - 6:30pm

CAVE - During Welcome Reception

## Reece Museum

9:00am - 4:30pm Hours of Operation

363 Stout Drive, ETSU Main Campus

*For more than 50 years the Reece has told stories of Appalachia. Stop in to experience the current art on display.*

## Lunch on Own

11:30am - 1:30pm

ETSU Dining Hall - Third Floor, DP Culp

*Enjoy lunch with your Buccaneer in the ETSU Dining Hall at a discounted rate of \$5 per family member.*

## Campus Tour \*

Two Sessions: 1:00pm **AND** 2:00pm

Welcome Center - Second Floor DP Culp

**Pre-registration required.**

*Take a campus tour with us! Tour includes an information session and a guided walking tour led by a current ETSU student.*

*Please allow two hours for the tour.*

## Bucky's Food Pantry Tour \*

3:00pm

DP Culp Outside next to Passport Office

**Pre-registration required.**

*Take a behind-the-scenes tour of Bucky's Food Pantry!*

## Reece Museum Special Tour \*

3:00pm

363 Stout Drive, ETSU Main Campus

**Pre-registration required.**

*Experience behind the scenes with this special tour.*

## Special Study Abroad Info Session \*

3:00pm

Room 219, DP Culp Student Center

**Pre-registration required.**

*Join the Education Abroad Office to learn how easy and accessible studying abroad can be.*

## Harvey Family Farm Tour & Flowers \*

3:00pm

Harvey Family Farm - 101 Harvey Lane, JC

**Pre-registration required.**

*Enjoy a tour of Harvey Family Farms, the best u-pick flowers farm in Johnson City! The largest and most vibrant flower farm in the Tri-Cities with you-pick flower fields for the perfect outing for families.*

## Forest Walk on ETSU Trail System \*

4:00pm

By Parking Lot 13 outside the DP Culp Center

**Pre-Registration Required**

*Led by the ETSU Counseling Center, this guided forest walk blends mindful walking, reflective pauses, and open discussion. Appx. 90 mins.*

## ETSU Planetarium Show \*

4:00pm

Hutcheson Hall

**Pre-registration required.**

*"Seeing the Invisible Universe: From Light Waves to Gravity Waves"*

*Catch the amazing show at the ETSU Planetarium!*

*This popular favorite will be featured Friday and Saturday! Appx. 1 hour.*

## Family Welcome Reception

5:00pm - 6:30pm

CAVE - DP Culp Student Center (NEW LOCATION)

*Kick off Family Weekend with this signature event, a drop-in gathering with light refreshments in University Commons, outside of the DP Culp*

## Tiebreakers

7:00pm - 8:00pm

Tiebreakers - 1805 N. Roan Street, JC TN

*Get ready for a blast at Tiebreakers! Enjoy bowling, arcade games, laser tag, and more! The first 100 family guests will receive a \$10 play card to jump start the fun! Must show Family Weekend Pass.*

## Stories & S'mores

7:00pm

Outside near 3<sup>rd</sup> floor entrance to Lucille Clement

*Co-sponsored by ETSU Department of Housing & Residence Life with ETSU Department of Storytelling and Communications. Enjoy storytelling while making s'mores with your family!*

# Saturday, September 27

## Johnson City Farmer's Market

8:00am - 1:00pm Open to the Public  
Downtown Pavilion at 105 West Main Street

### **Pre-registration required for \$5 Token \***

*The JC Farmer's Market has served our community since 1976. Browse fresh produce, baked and canned goods, arts and crafts, and enjoy community fellowship.*

## UpBeat Pilates with Campus Rec \*

9:00am

Center for Physical Activity (CPA)

### **Pre-registration required.**

*Begin your day with Campus Rec and UpBeat Pilates - a high energy mat class that utilizes traditional Pilates elements and equipment in an UpBeat way. All equipment is provided.*

## Martin Center for the Arts Tour \*

10:00am

ETSU Martin Center

### **Pre-registration required.**

*Explore ETSU's premier performing arts venue on a guided tour through its stunning performance halls. Learn how performances come to life in this state-of-the-art facility. Appx 1 hour.*

## ETSU Planetarium Show \*

Three Sessions: 10:00am, 11:00am **AND** 1:00pm  
Hutcheson Hall

### **Pre-registration required.**

*Catch the amazing show at the ETSU Planetarium! This popular favorite will be featured Friday and Saturday! Guests will meet at Hutcheson Hall to enter the Planetarium.*

*"Seeing the Invisible Universe: From Light Waves to Gravity Waves"*

## Harvey Family Farm Tour & Flowers \*

10:00am

Harvey Family Farm - 101 Harvey Lane, Johnson City

### **Pre-registration required.**

*Enjoy a special tour of Harvey Family Farms, the best u-pick flowers farm in Johnson City! The largest and most vibrant flower farm in the Tri-Cities with you-pick flower fields for the perfect outing for families.*

## Zipline Fun \*

Two Sessions: 11:00am AND 12:00pm

Basler Challenge Course - 505 Go Bucs Trail - Across from Lot 22A

### **Pre-registration required.**

*Hosted by Outdoor Adventure with Campus Recreation. Fly through the sky with this classic at ETSU, sailing the Zipline! Appx 1 hour.*

## ETSU Volleyball vs UTC

12:00pm

Brookes Gym

*Ticket purchase required. Visit [etsutickets.com](http://etsutickets.com) or email [tickets@etsu.edu](mailto:tickets@etsu.edu).*

## Robertson Center Tour

12:30pm - 4:30pm

ETSU Challenge Course - behind CPA

*The Robertson Center – a welcoming space that links students to people, programs, and resources. Come tour this new space. Arrive at 12:30pm for a brief tour or drop-in between 12:30pm - 4:30pm.*

## Family Bracelet Making

1:30pm - 2:30pm

Pergola on University Commons

*Co-Sponsored by the ETSU Department of Housing & Residence life with the ETSU Counseling Center and the Swifty Society. Come enjoy some fun, making bracelets with your family!*

## ETSU Family Tailgate

2:30pm - 5:00pm

University Commons & CAVE - CP Culp (NEW LOCATION)

*Get ready for kick off with a BBQ from The Firehouse, a local favorite! Yard games, music, BBQ, and door prizes! Come enjoy this signature event while connecting with other ETSU families!*

## ETSU Buc Walk

3:15pm

*Line the street with us to cheer on the BUCS! Led by the cheer and dance teams and the Marching Bucs, the football team will parade to William B. Greene Stadium! Gather up and down Jack Vest Drive for this fun ETSU tradition!*

## ETSU Football vs Mercer

Kickoff: 5:30pm

### **Separate Ticket Purchase Required.**

Visit [www.etsutickets.com](http://www.etsutickets.com)

*Cheer on the Bucs as they take on Mercer in this exciting Southern Conference matchup! Don your blue and gold and be part of the game day energy. Tickets required for entry.*

## Observatory Star Party

8:00pm - 10:00pm

Harry D. Powell Observatory, 1101 Narrow Lane

*"The Amazing, Exciting, Spitting Black Hole in IC 2431" Presented by Dr. Beverly Smith, join us for an observatory star party. Telescopes will be set up and available for visitors to view celestial objects. This event is weather permitting.*

**Schedule is subject to change**

**Pre-Registration Required \***

# Sunday, September 28

## Farewell Brunch

10:00am - 12:00pm

ETSU Dining Hall

Goodbyes can be hard. Wrap up a wonderful weekend with this signature event, a relaxing drop-in brunch in the dining hall. Enjoy a casual meal with your student and other ETSU families.



## A Message from your Family Council

We hope your family has a wonderful time at Family Weekend and that you enjoy making memories together on campus. Each year, the Family Council chooses a cause to support that strengthens the Buc community. This year, we encourage you to consider giving to the POLO Scholarship Fund and Bucky's Food Pantry—two efforts that directly support ETSU students.

Thank you for being part of our family and for helping us care for theirs.  



## Give to the *POLO Scholarship Fund*

The Preview and Orientation Leadership Organization (POLO) Scholarship Fund aims to raise \$25,000 so we can award a \$1,000 scholarship each year to a POLO Leader in need. Your gift (of any size) makes a direct impact on students who welcome new Bucs to ETSU. Questions? Email Tyler Parker at [parkertj@etsu.edu](mailto:parkertj@etsu.edu).



## Give to the *Bucky's Food Pantry*

Your gift helps provide food and essential items to ETSU students in need, ensuring no Buc goes hungry. Every dollar makes a difference in supporting our campus community. Questions? Email Bucky's Food Pantry at [foodpantry@etsu.edu](mailto:foodpantry@etsu.edu).