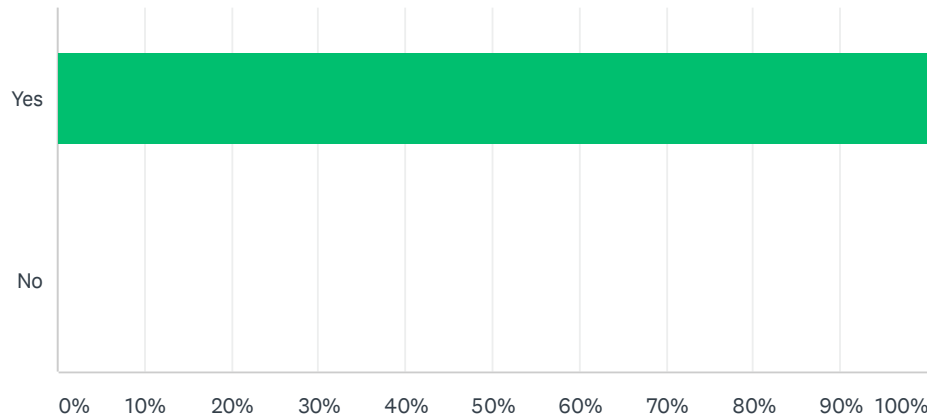


## Q1 Are you currently a member of a student organization at ETSU?

Answered: 116 Skipped: 0



ANSWER CHOICES		RESPONSES	
Yes		100.00%	116
No		0.00%	0
TOTAL			116

Q2 Tell us the name of the organization you are most involved with:

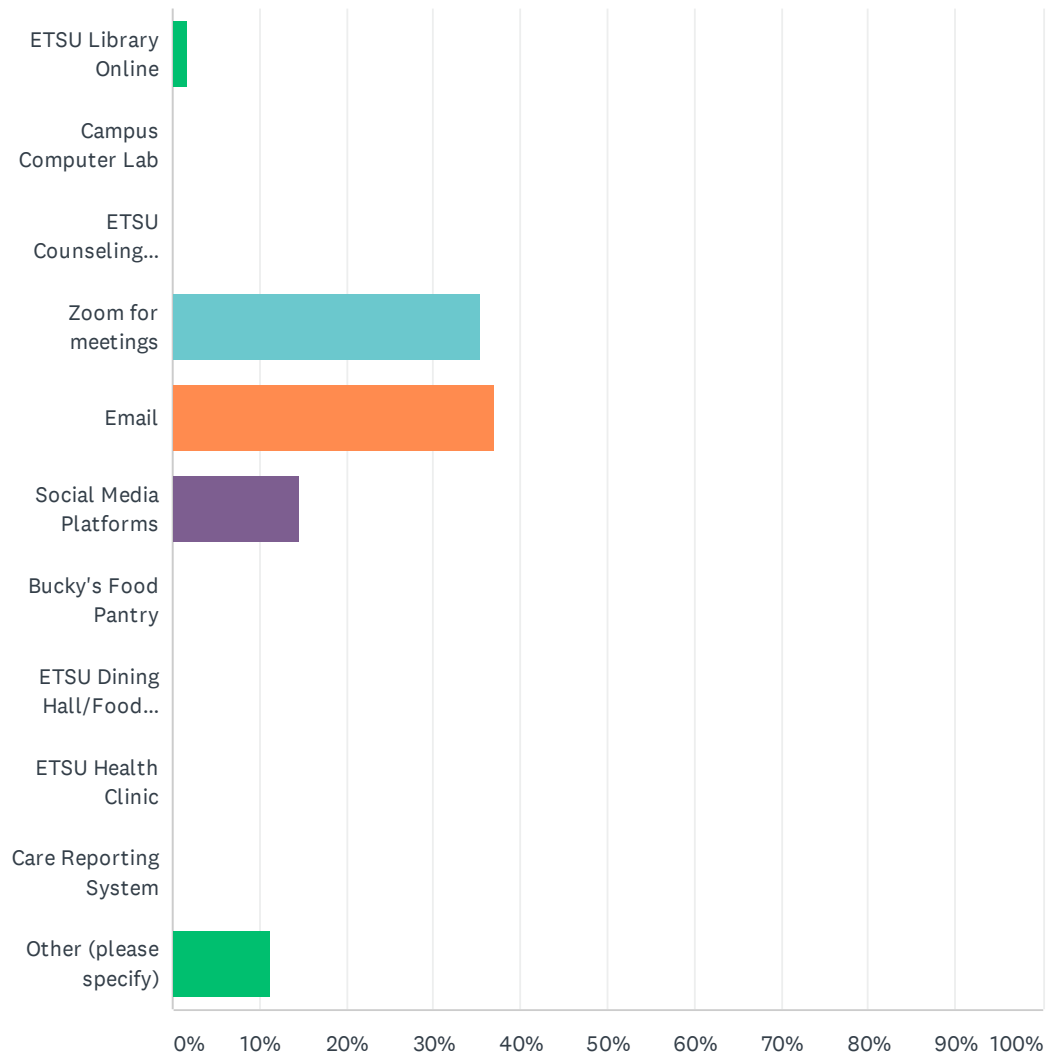
Answered: 116 Skipped: 0

**Q3 What is your organization doing to keep members engaged while distancing socially and taking health precautions?**

Answered: 116   Skipped: 0

## Q4 What resources are you taking advantage of during this time while classes are taking place online only?

Answered: 116 Skipped: 0



ANSWER CHOICES	RESPONSES	
ETSU Library Online	1.72%	2
Campus Computer Lab	0.00%	0
ETSU Counseling Services	0.00%	0
Zoom for meetings	35.34%	41
Email	37.07%	43
Social Media Platforms	14.66%	17
Bucky's Food Pantry	0.00%	0
ETSU Dining Hall/Food Services	0.00%	0
ETSU Health Clinic	0.00%	0
Care Reporting System	0.00%	0
Other (please specify)	11.21%	13
TOTAL		116

## Q5 What are you doing to recognize and/or provide closure for your graduating members?

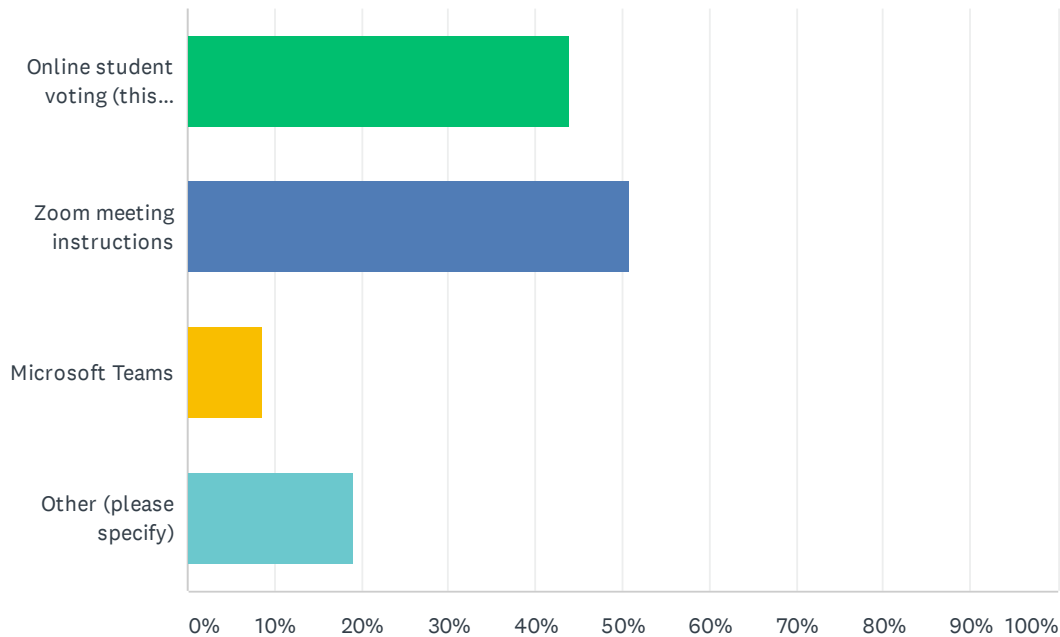
Answered: 116 Skipped: 0

**Q6 How are you supporting members that may be experiencing financial, mental health:**

Answered: 116   Skipped: 0

## Q7 What campus resources do you anticipate needing that we might offer?

Answered: 116 Skipped: 0



ANSWER CHOICES	RESPONSES	
Online student voting (this is available through student org pages on Buc-Hub)	43.97%	51
Zoom meeting instructions	50.86%	59
Microsoft Teams	8.62%	10
Other (please specify)	18.97%	22
Total Respondents: 116		



Q8 Anything else we help you with or just general questions or concerns:

Answered: 116 Skipped: 0

## Q9 Please list your student organization 's name

Answered: 115   Skipped: 1

## Q10 Please list your ETSU email address

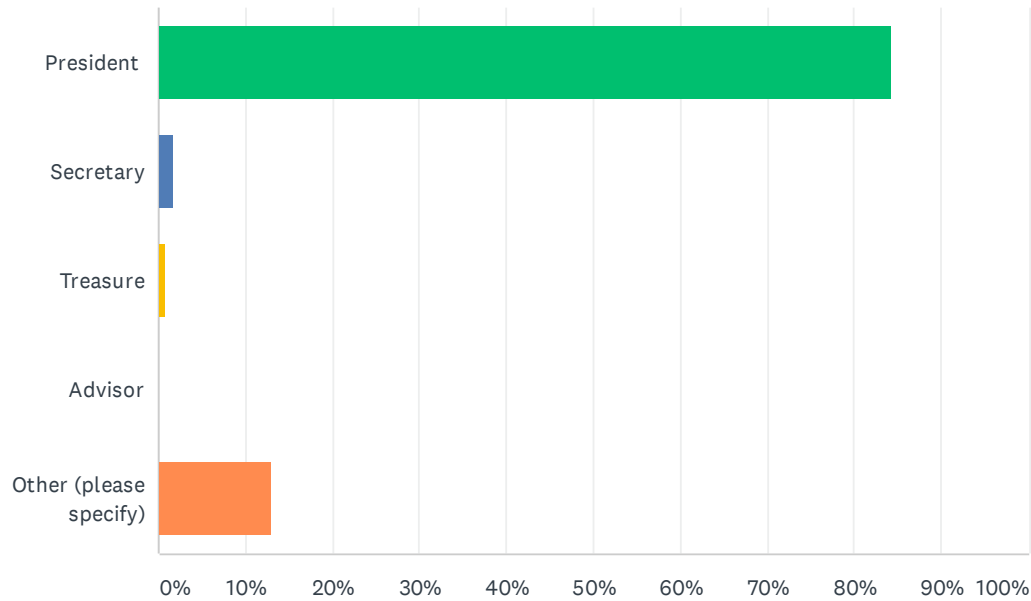
Answered: 115   Skipped: 1

## Q11 Please list a valid phone number for you

Answered: 115   Skipped: 1

## Q12 Please list your affiliation with your student organization

Answered: 115 Skipped: 1



ANSWER CHOICES	RESPONSES	
President	84.35%	97
Secretary	1.74%	2
Treasure	0.87%	1
Advisor	0.00%	0
Other (please specify)	13.04%	15
TOTAL		115