



STATE OF THE UNIVERSITY

EAST TENNESSEE STATE UNIVERSITY

2024-2025 Annual Report

INSIDE THIS REPORT

A Letter from Dr. Brian Noland.....	3
Progress Toward Strategic Initiatives	4
Pillars of Success	6
More Students, More Impact	7
Competing at the Highest Level	12
Honor Roll Distinction.....	12
Investing in People.....	13
Setting the Standard.....	14
Rising in Recognition.....	16
Broadway Shines	17
The Flagship of Appalachia	19
The 1911 Society 2024-25 Inductees	20
A Growing Gateway.....	21
Hub for Student Success	22
Years of Impact.....	26
Expanding Excellence.....	28
Online Education: A Path for Many.....	29
A Winning Tradition	30
New at ETSU	32
Festival of Ideas.....	32
The ETSU Marching Bucs	33
Investing in Future Educators	34
Supporting Rural Schools	34
Lifetime Learning.....	35
Nursing Expands in Kingsport	36
Surveying and Mapping.....	37
Building the Future.....	38
A Pioneer in Teaching Excellence.....	39
A Research Showcase.....	40
Celebrating Firsts	41
Transforming the Ashe Street Courthouse.....	41
Learning in a Hub of Innovation.....	42
ETSU Health: A Practice of Choice.....	43
Forever ETSU.....	44



A Letter from Dr. Brian Noland

The 2024-25 academic year affirmed East Tennessee State University's growing role as the "Flagship of Appalachia." Rooted in its mission to improve the quality of life for the people of the region and beyond, ETSU has long been a model of transformative education built on hands-on experiences, community-engaged learning, and service to others. This year, those commitments were exemplified as the ETSU community rallied in September to support friends and neighbors impacted by the devastation caused by Hurricane Helene.

Just weeks before Helene's landfall, we began the fall semester by welcoming one of the largest first-year classes in the university's history, along with a record-breaking number of on-campus residential students. These milestones show that ETSU is becoming a true destination, recognized for its exceptional living and learning environment. A vibrant energy was unmistakable across campus — in classrooms and laboratories, on athletic fields and performance stages.



When Helene struck in late September, that energy, combined with ETSU's vast expertise, compassion, and work ethic, was immediately channeled toward helping those in need. Our student leaders, in particular, shone as they swiftly and creatively transformed Homecoming activities into storm-relief efforts. Throughout the year, the ETSU family worked side-by-side with communities to aid recovery and reconstruction, and our commitment to this work will continue for as long as needed.

In November, the Marching Bucs carried the pride and hope of our region onto the national stage with a historic appearance in the 2024 Macy's Thanksgiving Day Parade, creating moments of joy and recognition for our entire community. In athletics, our baseball team delivered a season to remember, winning both the Southern Conference regular season and championship titles before an impressive run in the NCAA Tournament. Their success reflected not only their talent but also the resilience, preparation, and teamwork that embody the ETSU spirit.

Equally significant were our investments in people. This year, ETSU implemented the largest faculty and staff salary enhancements in the modern history of our institution, affirming our belief that people are our greatest strength. These investments ensure that ETSU will continue to attract, retain, and support the educators, researchers, and professionals who make our university extraordinary.

As I look back on the past year, I see more than a list of achievements. I see a university reflecting the unlimited potential of a region — expanding its reach, shaping future leaders, and driving innovation in education, health sciences, research, and service. Our enrollment growth, national visibility, vibrant campus life, and record-setting performances are all signs of this exciting momentum.

Being the "Flagship of Appalachia" is not simply a claim. It is a calling — one we will continue to answer with excellence, integrity, and an unwavering commitment to our students' success and the prosperity of the beautiful mountains we call home.

Godspeed, and go Bucs!

Brian Noland
President

PROGRESS TOWARD STRATEGIC INITIATIVES

Years 1–5

OBJECTIVE	RESULTS
Launch a comprehensive student support center	
Enhance bridge programs for incoming students	✓
Implement leadership initiatives that close achievement gaps	✓
Implement an enhanced budget process	✓
Develop a revised peer group comprised of realistic and aspirational institutions	✓
Implement academic department chair training	✓
Obtain membership in the Association of Public & Land-Grant Universities	✓
Brown Hall renovation (Phase 1)	✓
Academic Building construction	✓
College of Business and Technology updates	
Dedicated marching band space	
Planning process for football stadium expansion	
ETSU Health facility	
Lamb Hall renovation	✓
Planning process for Walf-Pickel renovations	
Complete the 2024-2034 Facilities Master Plan	✓
Create innovative programs in Health Sciences, Business and Technology, and Arts and Sciences	✓
Expand presence in downtown Kingsport and open new off-campus locations	
Enhance Valleybrook to enable innovation in key research and educational areas	✓
Through implementation of the Quality Enhancement Plan, create a Center for Community Engagement	✓
Enhance the general education curriculum	✓
Continue to expand degree pathways for military veterans, dependents, ROTC cadets, and active-duty service members	

Years 5–10

OBJECTIVE	RESULTS
Expand and revitalize Continuing Education, offering opportunities in Johnson City and at Allandale/downtown Kingsport sites	
Double the number of online undergraduate programs and grow enrollment in online programs	
Undertake review of campus branding	✓
Improve faculty and staff salaries to a level equivalent to the peer average by year five	
Launch a competency-based education program targeted toward the needs of adults across the region	
Double the volume of externally sponsored research activity	✓
Be recognized as a “Great College to Work For®”	✓
Improve retention rates for all students to 85%	
Improve graduation rates for all students to 60%	
Ensure 90% of students participate in an internship or other real-world experience	
Expand Access ETSU	✓
Develop multiple pre-college academies for middle/high school students	
Double the number of adaptive learning classroom spaces in each building	
Make at least five cluster hires in existing or potential growth areas of research and broader scholarship, particularly focused on health sciences	
Maintain and expand current funding levels from NIH and increase research expenditures derived from federal agencies other than NIH (National Science Foundation, USDA, etc.)	✓
Establish at least three fixed-term endowed chairs of excellence in identified strength or growth areas of scholarship	
Begin construction or renovation of a new residence hall	✓
Create five new interdisciplinary programs	
Develop co-curriculum for “soft skills” (e.g. teamwork, communication, leadership, etc.) that can be documented on an experiential or cocurricular transcript and via badges	
Partner with a local high school with a high-risk population to develop the first cooperative high school opportunity in our region to provide a seamless transition from high school to college	
Increase research access to Little Bucs and University School students	
Enhance Sherrod Library to become the key academic collaboration space for ETSU	✓
Update Alexander Hall (University School)	

PILLARS OF SUCCESS



ACCESS AND SUCCESS

Support a strategic growth agenda that maximizes the student experience



RESEARCH AND INNOVATION

Enhance research and bridge the humanities and sciences



TEACHING EXCELLENCE

Ensure excellence in the student-to-faculty environment and celebrate great teachers



COMMUNITY STEWARDSHIP

Provide educational opportunities within the community that benefit both students and the region



EMPOWERED EMPLOYEES

Empower employees to pursue excellence and build fulfilling careers at ETSU



FISCAL SUSTAINABILITY AND OPERATIONAL EXCELLENCE

Harness the power of people, processes, and technology to achieve operational excellence



More Students, More Impact



ETSU continues to achieve remarkable enrollment milestones, demonstrating its growing reputation as a premier educational institution and the Flagship of Appalachia. The Class of 2028 was welcomed to campus at the start of the fall 2024 semester with 2,138 incoming students — just three students short of last year’s all-time record of 2,141. This marked the second consecutive year of historic enrollment numbers for the university.

Enrollment success extends beyond incoming students, with nearly 3,300 students residing in university housing, representing the largest number of students ever living on campus. This achievement reflects ETSU’s appeal not just within Tennessee, but throughout the Southeast region.

“To have back-to-back historic levels of enrollment is extraordinary,” President Dr. Brian Noland noted. “The high number of students choosing ETSU affirms that our university is becoming an institution of choice.”

Sustaining incoming classes of 2,100 students aligns with foundational elements of ETSU’s Strategic Plan, which also focuses on improving retention and graduation rates, enhancing campus facilities, adding workforce-aligned academic programs, and growing research activity.

Every student at ETSU will have opportunities to Go Beyond the Classroom through experiential learning initiatives that create meaningful connections between academic study and real-world regional challenges.



By the Numbers: 2024-25

10,050
APPLICATIONS

929
TRANSFERS

2,618
OUT-OF-STATE
ENROLLMENT

13,982
OVERALL
ENROLLMENT

- 599 Border Counties
- 2,019 Other Out-of-State

- 10,829 Undergraduate
- 2,400 Graduate
- 753 Professional

2,138
FIRST-TIME
FRESHMEN

439
INTERNATIONAL
ENROLLMENT

BUCS REBUILD TOGETHER



When Hurricane Helene struck in September 2024, ETSU responded with care and compassion, focusing on ways to support the campus community and the surrounding region. While campus remained physically unharmed, many students, faculty, and staff were directly impacted. The university canceled classes for a week, emphasizing recovery and well-being.

In the months that followed, ETSU raised over \$105,000 to support students, faculty, and staff affected by the storm and organized collection drives for food, supplies, and clothing. A benefit concert at the ETSU Martin Center raised an additional \$36,804 for Second Harvest Food Bank.

The campus rallied to host a record-setting blood drive with the Marsh Regional Blood Center and to assemble hundreds of hygiene kits, flood buckets, and school supplies. From organizing volunteers to writing encouraging letters of support for emergency responders and disaster survivors, the campus mobilized to assist.

As cleanup continued in 2025, ETSU's Office of Community Engagement organized four Hurricane Helene Recovery Workdays in June and July, allowing employees who chose to volunteer to spend a day working on relief efforts in the region.



By the Numbers

\$105,000

raised to assist students, faculty, and staff impacted by the storm

50,000+

pounds of food collected for Second Harvest Food Bank

4,223

volunteer slots were filled through the ETSU Serves platform



Stories from the Storm

In the aftermath of Hurricane Helene, the ETSU Research Corporation, Niswonger Foundation, Ballard Health, and StoryCollab partnered to launch “Stories from the Storm: Reflections on Appalachian Resiliency,” a virtual storytelling initiative supporting those affected by the storm.

Over eight weeks, participants gathered in bi-weekly listening sessions to share powerful stories of strength, courage, and healing.

Held from October to December, the sessions invited health professionals, first responders, and community members to reflect on the challenges and triumphs that followed the disaster. Guided by trauma-informed facilitators, participants found connection and resilience in shared experiences.

ALMOST 1,000

individuals attended six information sessions for those interested in volunteering to provide hands-on support for disaster recovery efforts

130+

faculty and staff participated in the summer Hurricane Helene Recovery Workdays in June and July 2025



Climate Office Leads Response

When Hurricane Helene barreled inland, it devastated parts of Appalachia, causing historic flooding and destruction. At the center of the response: ETSU's Climate Office, home to Tennessee's official climatologist, Dr. Andrew Joyner.

Joyner and his team used drone surveys and stream data to assess the catastrophic flooding along the Nolichucky River, where rainfall totals and streamflow rates shattered records. In some places, floodwaters surged to levels never before recorded.

As the state's hub for weather science, ETSU played a critical role in documenting the storm's unusual intensity caused by saturated soils, unique mountain topography, and Gulf moisture.

"This was a generational event," said Joyner.

The work underscores ETSU's growing influence on weather research. A video series from the Climate Office breaks down what made Helene so powerful and what it signals about the future of severe weather in our region.



**Watch Rising
with Hope**



Bucs Go Beyond

ETSU students completed four disaster relief-focused service experiences in spring 2025 as part of the Alternative Spring Break Program, with special emphasis on Hurricane Helene recovery in the region.

While working with multiple community partners, ETSU's Alternative Break Program trains and immerses students in service experiences designed to connect fellow Buccaneers and community members while enhancing personal growth, awareness, and lifelong learning.

In total, 38 students and four faculty/staff partners attended two regional experiences, as well as one in Washington, D.C., and one in Nashville.

The two local trips focused on disaster recovery with a jam-packed week of service and education split between organizations like Holston Habitat for Humanity, Second Harvest Food Bank, and the American Red Cross.

Another group traveled to Nashville to serve with the Tennessee Environmental Council and the Nashville Food Project, while the last group volunteered in Washington, D.C., with the Habitat for Humanity ReStore, Martha's Table, and the Wyaconda Warehouse.

Two people in yellow safety vests standing in flood zone looking at a map



Care in the Crisis

In the aftermath of Hurricane Helene, ETSU Health and ETSU's health sciences colleges sprang into action, with students and educators alike raising thousands of dollars for relief efforts, while many more rolled up their sleeves to donate blood, supplies, and time to the multitude of relief efforts across Appalachia.

That included an interprofessional team of physicians from ETSU Health Family Medicine Johnson City, who conducted home visits in four counties to perform welfare checks and deliver needed supplies, as well as multiple student-led initiatives in all of ETSU's health science colleges to support those affected by the storm.



Competing at the Highest Level



Confetti, balloons, and celebration awaited ETSU junior Leah Loveday, who became a Truman Scholar – one of the nation’s most prestigious academic honors – only a few months ago.

It’s a powerful story. But at ETSU, it’s not unusual.

From back-to-back Truman Scholars to Fulbright winners and Rhodes finalists, the university is competing and winning at the highest levels.

“This is incredibly unusual for a regional public university,” said ETSU President Dr. Brian Noland. “But it says something about who we are.”

In 2025, ETSU celebrated a record nine Gilman Scholars, most of whom are first-generation students. And two faculty members and one student earned Fulbright U.S. Scholar awards for research in Hungary and Sri Lanka.

“These achievements reflect years of strategic investment,” said Dr. Carson Medley, Director of ETSU’s Office of Prestigious Awards. “We’re building a future where student and faculty success go hand-in-hand, and we’re just getting started.”



Honor Roll Distinction



Named a Great College to Work For® two years in a row (2024 and 2025), ETSU earned special distinction as an Honor Roll institution in 2025.

In 2025, ETSU was recognized in five categories:

- Job Satisfaction and Support
- Professional Development
- Mission and Pride
- Faculty and Staff Well-being
- Shared Governance

The Honor Roll designation is awarded to the top 10 four-year colleges and top four two-year colleges in each size group that are recognized in the greatest number of categories.





**Watch the
Celebration**

Investing in People



East Tennessee State University made a landmark investment in its people last year, allocating more than \$4.1 million in recurring funds to address market pay gaps. Nearly 1,000 faculty and staff received targeted salary enhancements, advancing our long-term strategy to align compensation with peer institutions.

This milestone underscores ETSU's commitment to attracting and retaining top talent while strengthening our competitive position for the future.

8.9%
**VOLUNTARY
STAFF TURNOVER**

Setting the Standard



East Tennessee State University continues to lead in its support of military-affiliated students, earning Gold status in the 2025-26 Military Friendly® School rankings.

ETSU is one of just 32 large public institutions nationwide to receive this distinction, a reflection of the university's deep commitment to veterans, service members, and their families.

"This ranking affirms the culture we've built here," said Col. Dan Bishop, Director of Military and Veteran Services. "From the president's office to our classrooms, ETSU doesn't just talk about support — we live it."

That support includes priority registration, dedicated advising, VA work-study opportunities, and more. The university also offers Green Zone training for faculty and staff and recently expanded access for active-duty military by lowering the undergraduate tuition rate to \$250 per credit hour for those using Department of Defense Tuition Assistance.

Bishop, a U.S. Army ROTC Hall of Fame inductee and former professor of military science at ETSU, helped grow the university's outreach efforts. ETSU has earned the Military Friendly® designation for 15 straight years.

The university's commitment also extends into medical education.

This year, the Quillen College of Medicine launched a first-of-its-kind partnership with Special Operations Forces to School of Medicine, guaranteeing interviews and direct admission to qualifying candidates from U.S. Special Operations Forces.

"ETSU is a place where service members and veterans are seen, supported, and empowered," said ETSU President Dr. Brian Noland. "We are proud to stand beside them as they pursue new goals and build meaningful futures."

1,100 MILITARY-AFFILIATED STUDENTS





Rising in Recognition



2024-25 Rankings and Accolades

- A **top value** university
(Money 2025 Best Colleges List)
- Among **top institutions** for online master's programs in Tennessee
(OnlineMastersColleges.com)
- **Best Online MSN Program in Tennessee**
(RegisteredNursing.org)
- **Best Master of Public Health program**
(Healthcare Management Degree Guide)
- ETSU Postal, Passport and Printing Services named **2025 Horace Lytch Mail Center of the Year**
(College and University Mail Services Association)
- **"Voter Friendly Campus"**
(Fair Elections Center's Campus Vote Project and NASPA: Student Affairs Administrators in Higher Education)
- **Best for Vets:** Colleges
(Military Times and Intelligent.com)
- **6th:** Top online master's degree in digital marketing
- **7th:** Best master's degree in human services
(Individual Family and Community Sciences)
- **9th:** Best online master's degree in human services
(Individual Family and Community Sciences)
- **12th:** Best online respiratory therapy program
- **13th:** Best online Master of Science in Nursing-nurse practitioner

ETSU's Quillen College of Medicine earned high marks in *U.S. News and World Report's* 2025 Best Medical School Rankings – particularly in primary care and impact in rural and underserved communities.

In *U.S. News & World Report's* ranking of schools with the "Most Graduates Practicing in Medically Underserved Areas," the Quillen College of Medicine ranked second in the nation. The Quillen College of Medicine was also designated a "Tier 1" school in the "2025 Best Medical Schools: Primary Care" ranking, placing it in the top 16 in the nation.

Both rankings were the best among colleges in Tennessee.



Broadway Shines



The ETSU Martin Center for the Arts lit up the region in 2025 with its third Spring Broadway Season, presented by Bank of Tennessee. Four acclaimed productions brought powerful storytelling and unforgettable music to local audiences.

The season opened in January with “Pretty Woman: The Musical,” followed by the Grammy® and Tony® award-winning “Hadestown” in March. April featured two moving productions: the groundbreaking “Dear Evan Hansen” and “Come From Away,” a heartfelt tribute to compassion and community in the wake of 9/11.

Each show drew enthusiastic patrons, underscoring the Martin Center’s growing reputation as a premier destination for world-class entertainment.

“We were thrilled to welcome these incredible productions to our stage,” said Jennifer Clements, Executive Director of the Martin Center. “It was an unforgettable season.”

Thanks to generous sponsors and a dedicated arts community, Broadway continues to thrive in the heart of Appalachia.



Martin Center Season By the Numbers*

3,093
BOXES OF
POPCORN SOLD

91
VOLUNTEERS

41,819
TICKETS ISSUED

28
SEMI-TRUCKS
UNLOADED

3,053
TOTAL VOLUNTEER
HOURS WORKED

2,549
TOTAL PATRONS
OVER 3 PERFORMANCES
(Highest attended Broadway show — “Hadestown”)



The Flagship of Appalachia



East Tennessee State University has long embraced its role as a champion of Appalachia. From health and education to arts and culture, ETSU's mission is deeply rooted in service to the region.

That mission is on full display through the Center of Excellence for Appalachian Studies and Services, which celebrated its 40th anniversary in 2025. A hub for research, public scholarship, and cultural preservation, the center has helped define ETSU's identity and impact for generations.

The center earned a \$350,000 National Endowment for the Humanities grant to digitize and relaunch the Encyclopedia of Appalachia, a landmark reference work first published in 2006.

The updated edition will expand its 2,000+ entries and provide global access to the stories, people, and places that define the region.

"Reviving the Encyclopedia is about more than preserving the past," said ETSU Provost Dr. Kimberly D. McCorkle. "It amplifies the voices and complexity of Appalachia for a new generation."

The anniversary celebration continued with a special event at the Reece Museum in early 2025, featuring a panel of scholars and community leaders who helped shape the center's enduring legacy.

Beyond the center, ETSU continues to lead in rural health, economic development, and sustainability, advancing regional priorities through education and service.

Signature programs include the world-renowned Bluegrass, Old-Time, and Roots Music degree; graduate programs in Appalachian Studies; and the Appalachian Collegiate Research Initiative, which sends students to Washington, D.C., each year to present community-based research.

"As the Flagship of Appalachia, ETSU isn't just located in the region," said Dr. Ron Roach, Director of the center. "We are part of its fabric, and we're working every day to ensure its future is even stronger than its past."

The 1911 Society 2024-25 Inductees



Named in commemoration of the year ETSU was founded, the **1911 Society** honors some of the university's most notable graduates from undergraduate, graduate, and professional programs.



Skylar Brackett



Dr. Opal Frye-Clark



Sara Madison Goodwin



Matthew Kinsler



Taylor Leonard



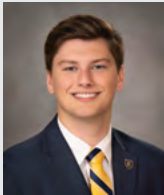
Abigail Simpson



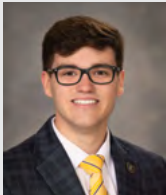
Dr. Morgan Teeters



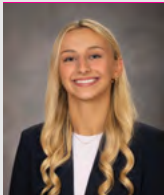
Shaina Thompson



Hunter Turgeon



Trent White



Ava Yobst



Thanks to public and private partnerships, the ETSU Research Corporation is transforming Valleybrook into a regional biomanufacturing scale-up hub, attracting top synthetic biology companies and driving innovation and economic opportunity across the region.



The 2024 Supply Chain and Digital Technology Summit connected industry, government, and education leaders to explore innovations and strategies driving growth in Appalachia's supply chain ecosystem.



The Office of the Provost sponsored monthly training sessions for ETSU's Department Chairs. Topics ranged from access systems and correct processes and procedures for academic matters to departmental strategic planning. In preparation for the 2025-26 academic year, the chairs attended an American Association of State Colleges and Universities (AASCU) Chair Leadership Institute.



A Growing Gateway

Gatton's Early Admission Pathway thrives



Since launching in 2020, ETSU Bill Gatton College of Pharmacy's Early Admission Pathway (EAP) has grown by nearly 300%, offering high-achieving students a direct route into pharmacy school.

The pathway allows ETSU freshmen and accepted high school seniors to secure a seat in the Pharm.D. program, complete both a bachelor's and Pharm.D. in six years, and access scholarships, mentoring, and research.

"When I was in high school, I wasn't sure what I wanted to do for a career. I signed up for a summer camp at Gatton, and it was then that I fell in love with pharmacy," said student pharmacist Sean Kimball ('27). "That is also where I first heard about the EAP program, and I applied shortly after. Once I got into the program, it immediately felt like I was a part of the Gatton family."

"Every semester I would talk with the admissions staff to make sure that I was taking the proper undergraduate courses and if I needed any advice," Kimball said, "and they were always there to help."



By the Numbers

75.6%
RETENTION RATE

53.2%
GRADUATION RATE

- Male: 45.3%
- Female: 58.5%

4,665
TOTAL PELL-ELIGIBLE
STUDENTS (FALL 2024)

3.55
AVERAGE GPA OF
ENROLLED FRESHMEN

22.7
AVERAGE ACT SCORE

Hub for Student Success



ETSU has launched the Mary V. Jordan Center, a one-stop resource hub dedicated to supporting students from enrollment through graduation and beyond. This initiative provides personalized guidance, including academic mentoring, mental health support, success planning, and more, tailored to each student's unique journey.

The Jordan Center welcomed its first cohort this summer: 200 full-time, first-year students who are low-income, first-generation, or working toward academic improvement. Identified through a partnership with Enrollment Management and Financial Aid, these students are receiving individualized support as they progress through ETSU's Compass Core curriculum, which emphasizes real-world skills and interdisciplinary learning.

Led by **Dr. Keith Johnson** (pictured at right), ETSU's new Vice President for Student Success, the center brings together services from across campus, including TRIO Programs, Career Services, and the Counseling Center. Whether students need long-term support or a quick check-in, the Jordan Center is committed to meeting them where they are and helping them thrive.

A Strategic Budget Model Redesign



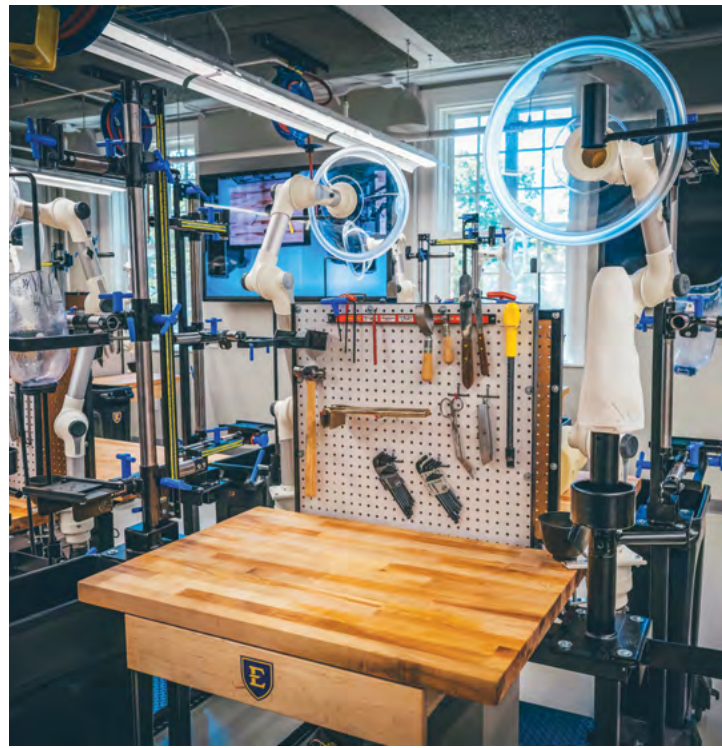
Last year, ETSU completed a comprehensive redesign of its budget model, creating a more transparent and strategically aligned approach to resource allocation. This new model positions the university to fund growth, innovation, and key priorities — such as market-based salary increases — while ensuring stability for all units. By aligning resources with strategic goals, ETSU has strengthened its ability to invest in people, programs, and initiatives that advance the university's long-term vision.



The Launch of Voyager



On July 1, ETSU launched Voyager, a modern, cloud-based business system that unifies human resources, finance, and payroll into one streamlined platform. This long-anticipated transformation reflects the university's commitment to innovation, efficiency, and continuous improvement. Voyager marks a major step forward in how ETSU operates, enabling smarter workflows and better support for employees. With robust training and resources available, the university community is empowered to embrace this change together and shape a more agile future.



The Year in Photos

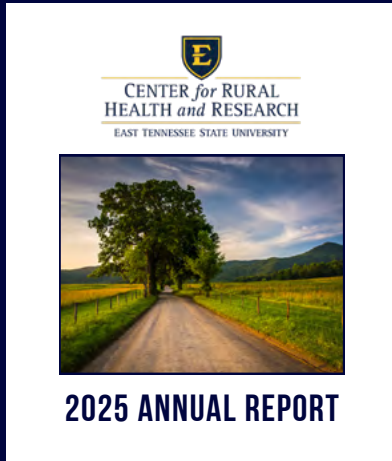




Years of Impact

Several programs and initiatives celebrated milestone anniversaries in 2024-25:

5 years



CENTER FOR RURAL HEALTH AND RESEARCH



ETSU's Center for Rural Health and Research celebrated five years of working to improve lives across rural communities, securing more than \$17 million in external funding since it was founded.

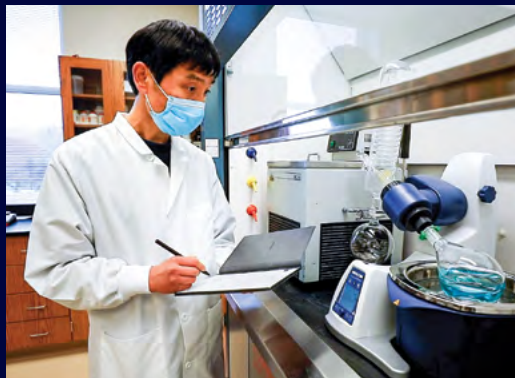


ETSU/BALLAD HEALTH STRONG BRAIN INSTITUTE



ETSU celebrated five years of the ETSU/Ballad Health Strong BRAIN Institute's statewide impact in trauma-informed care, alongside the College of Nursing's Better Workplaces Silver Recognition for fostering a safe, supportive workplace culture.

10 years



CENTER OF EXCELLENCE IN INFLAMMATION, INFECTIOUS DISEASE, AND IMMUNITY



ETSU's Center of Excellence in Inflammation, Infectious Disease, and Immunity is celebrating a decade of excellence in basic, translational, and clinical research.

20 years



BILL GATTON COLLEGE OF PHARMACY



Celebrating its 20th anniversary in 2025, Bill Gatton College of Pharmacy has grown into a nationally recognized institution, producing pharmacists committed to serving rural and underserved communities.

25 years



GRAY FOSSIL SITE



Following a discovery that changed the region, the Gray Fossil Site and Museum celebrated 25 years of innovation and research in 2025.



SHERROD LIBRARY



With a series of fun and engaging events, the Sherrod Library marked its 25th anniversary in its current location on ETSU's main campus.



ROAN SCHOLARS



This fall, the Roan Scholars Leadership Program celebrates 25 years and over 100 alumni who have been cultivated into exceptional leaders, created community connections, and dedicated themselves to serving this region and beyond.

Expanding Excellence



New to ETSU in AY 2024-25

Undergraduate Programs:

- BS in Mechatronics Engineering

Undergraduate Minors*:

- Ecology and Natural Resources
- Filmmaking
- Health Care Foundations
- Sports Media

Undergraduate Concentrations:

- Biology Teacher Education in the B.S. in Biology
- Biology and Chemistry Teacher Education in the B.S. in Biology
- Teacher Education in the B.A. in History
- Teacher Education in the B.S. in History
- Mathematics Teacher Education in the B.S. in Mathematics

Graduate Programs:

- Master of Music (M.M.), with concentrations in
 - » Composition
 - » Conducting
 - » Instrumental Performance
 - » Music Education
 - » Percussion Performance
 - » Performance
 - » Piano Performance
 - » Vocal Performance

Graduate Certificates:

- One Health and Climate Studies
- Qualitative Research Methods
- Graduate Concentrations:
 - Elementary Education K-5 in the MAT in Teacher Education



Programs that received accreditation or reaccreditation status in 2024-25

- Bluegrass, Old-Time, and Roots Music: B.A.*
- Computing: B.S. (a new concentration, Cybersecurity and Modern Networks)*
- Early Childhood Development (Early Care and Education concentration): B.S. #
- Early Childhood Education (Master Teacher and Research concentrations): M.A. #
- Environmental Health: BSEH #
- Occupational Therapy: OTD*
- Orthotics and Prosthetics: MSOP*

*Newly accredited

#Accreditation reaffirmed

180 ACADEMIC PROGRAMS

Online Education: A Path for Many



ETSU's online programs provide a flexible, high-quality education that allows students to achieve their educational goals. Whether they're balancing work and family, serving in the military, or unable to commute to campus, they receive the same quality education as other students. Eighty-five online program options across six colleges offer choices in such fields as business, technology, nursing, leadership, and education.

May 2025 graduate Michael Fowler earned his M.A. in criminal justice and criminology and is a Johnson City Police Department investigator.

He is pictured with his wife, Lily Fowler, Assistant Director for Dual Enrollment in our Undergraduate Admissions office, and their two daughters, Graycie and Lyla.



By the Numbers

6,760

TOTAL
INQUIRIES

21%

OF STUDENTS ENROLLED
EXCLUSIVELY ONLINE

55%

OF FULLY ONLINE STUDENTS
ARE AGE 25 AND OLDER

A Winning Tradition



ETSU continued to boast one of the most competitive athletic departments in the Southern Conference during the 2024-25 academic year. The Buccaneers won conference championships in men's soccer, men's golf, men's tennis, and baseball within the past year.

Through this success, ETSU was awarded the conference's Commissioner's Cup, which goes to the top men's athletics program in the league. It marks the seventh time that the Commissioner's Cup ended up in Johnson City.





New at ETSU



ETSU welcomed several individuals to new senior leadership roles:



Dan Bragg
Chief Executive
Officer, Medical
Education Assistance
Corporation



Dr. Dena Evans
Dean, College of
Nursing



Dr. Jennifer Hitt
Executive Director,
Tennessee Center
for Nursing
Advancement



Dr. Keith Johnson
Vice President for
Student Success



Dr. Jeff Snodgrass
Dean, College of
Health Sciences

Festival of Ideas



The 2025 Festival of Ideas at ETSU featured keynote talks by Anthony Doerr (right), Pulitzer Prize-winning author of ETSU's 2024-25 Common Read *All the Light We Cannot See*, and LeVar Burton (below), celebrated actor and literacy advocate. More than 1,450 people attended events at the ETSU Martin Center, setting a new festival record. The week also included a workshop, "Light in the Darkness," exploring how stories cultivate empathy, resilience, and joy.





The ETSU Marching Bucs

A Comeback Story



In 2024, the ETSU Marching Bucs made history as the first college marching band from the state of Tennessee to perform in the Macy's Thanksgiving Day Parade in more than 60 years. The invitation marked a defining milestone, not only for the band, but for the entire university.

After more than a decade of dormancy, the Marching Bucs returned alongside the revived Buccaneer football program. Through a bold effort fueled by student passion and institutional support, the band reestablished its place on campus and quickly rose to national prominence. Their journey to Macy's is now captured in an ETSU-produced documentary that highlights the grit, discipline, and heart behind every step.

This is more than a performance. It's a comeback story. One of transformation, of students empowered to lead, of a university investing in opportunity, and of a community rallying behind a shared dream. The sound of the Marching Bucs is now a symbol of momentum — and a legacy in motion.



**Watch the Marching
Bucs Documentary**

Investing in Future Educators



In a Carter County classroom, Gracie Freeman is already living her dream.

A recent graduate of ETSU, Freeman secured a position at Hampton Elementary School through the university's Rural Initiative for Talented Educators. The program offers hands-on experience in rural districts, helping teacher candidates grow while addressing local workforce needs.

"Coming back as a teacher and helping students learn and grow is such a privilege," Freeman said.

Freeman is one of many ETSU education graduates choosing to stay and serve in Appalachia -- a powerful reflection of ETSU's mission to strengthen the region through education.



**Hear
Gracie's
story.**

SUPPORTING RURAL SCHOOLS

To further its mission, ETSU launched the Center for Rural Education and Development.

The center connects research with practice to strengthen rural teacher pipelines, expand workforce pathways, and foster school-community partnerships. It ensures Appalachian students learn from educators who understand and uplift their communities.



The School of Interdisciplinary and Continuing Studies serves around **2,500 community members and students annually**, including post-traditional learners, K-12 campers, and lifelong learners.



Lifetime Learning



ETSU's School of Interdisciplinary and Continuing Studies is reshaping what it means to be a lifelong learner. From cross-disciplinary degrees to career-building certifications, the school serves learners of all ages and backgrounds — offering flexible, accessible options that meet the needs of today's workforce and tomorrow's leaders.

The Department of Cross-Disciplinary Studies blends classroom instruction with real-world experience, helping students develop practical skills and a deeper understanding of the world through internships, service learning, and independent study. Meanwhile, ETSU's summer camps and conferences give children and adults alike the chance to explore new ideas and passions — often in hands-on, collaborative settings.

"We're creating opportunities for personal and professional growth that are relevant, innovative, and deeply rooted in community need," said Dr. Mike Hoff, Director of the school.

From a 12-year-old coder at summer camp to a working adult earning a new credential, ETSU empowers learners at every stage of life. These programs not only broaden individual horizons but also strengthen the region's economic and social fabric. In every offering, the school reinforces ETSU's commitment to accessible, high-impact education.



Nursing Expands in Kingsport



The ETSU College of Nursing is expanding its footprint in Kingsport through strategic program relocations designed to enhance student learning and community impact. The Bachelor of Science in Nursing (BSN) program will move from Allandale to the Kingsport Center for Higher Education, offering students access to updated facilities and a vibrant academic setting. This transition supports the college's commitment to providing high-quality education in a modern environment while preserving the personalized, student-centered approach that defines its programs.

In addition, the college's long-standing and growing Nurse-Family Partnership program will relocate to the Allandale site. This move allows for the program's continued growth and deeper engagement with families in the region, while providing space for the college to grow similar grant-funded initiatives.

These changes reflect ETSU's dedication to expanding educational opportunities and strengthening community partnerships in Kingsport. Students will continue to benefit from small class sizes, strong faculty mentorship, and hands-on clinical experiences that prepare them to meet critical health care needs across the region.

Surveying and Mapping

A New Chair of Excellence



"Every time a piece of property is sold, and every time a piece of property is developed, a surveyor is involved. Surveying and mapping are vital to growth and prosperity," said Rab Summers.

And future surveyors are a common sight at ETSU, with students in the Surveying and Mapping Sciences program — the only one of its kind in the Appalachian region — getting their first taste of hands-on, practical experience. These students stand to benefit greatly from the generosity of the Summers family and their business.

From left to right: Grant Summers, Dr. Linda Latimer, Rab Summers, and Dr. Brian Noland.

In September 2024, Rab Summers and his son Grant announced the creation of an endowment to fund the Summers-Taylor Chair of Excellence in Surveying and Mapping Sciences at ETSU. Endowment funds are being used to purchase state-of-the-art equipment for students, nearly 100% of whom are employed upon graduation, and plans are progressing to hire a chairholder who is nationally known in the field.



Building the Future



ETSU is undergoing a major transformation thanks to strategic planning and significant state investment.

At the heart of this progress: renovations to Brown Hall, new residence space in Stone Hall, and construction of key academic facilities.

Brown Hall, the university's central science building, is being fully modernized through a \$100 million, multi-phase project.

Upgrades will enhance classrooms and labs for Biology, Chemistry, and Physics and Astronomy, supporting both enrollment growth and research needs.

ETSU also began converting Stone Hall back into student housing, adding 80 new beds this fall. Other upgrades include \$3.5 million for campus-wide repairs and \$3 million in new equipment for the Quillen College of Medicine.

ETSU is preparing to break ground on a state-of-the-art Integrated Health Sciences Building in 2026.

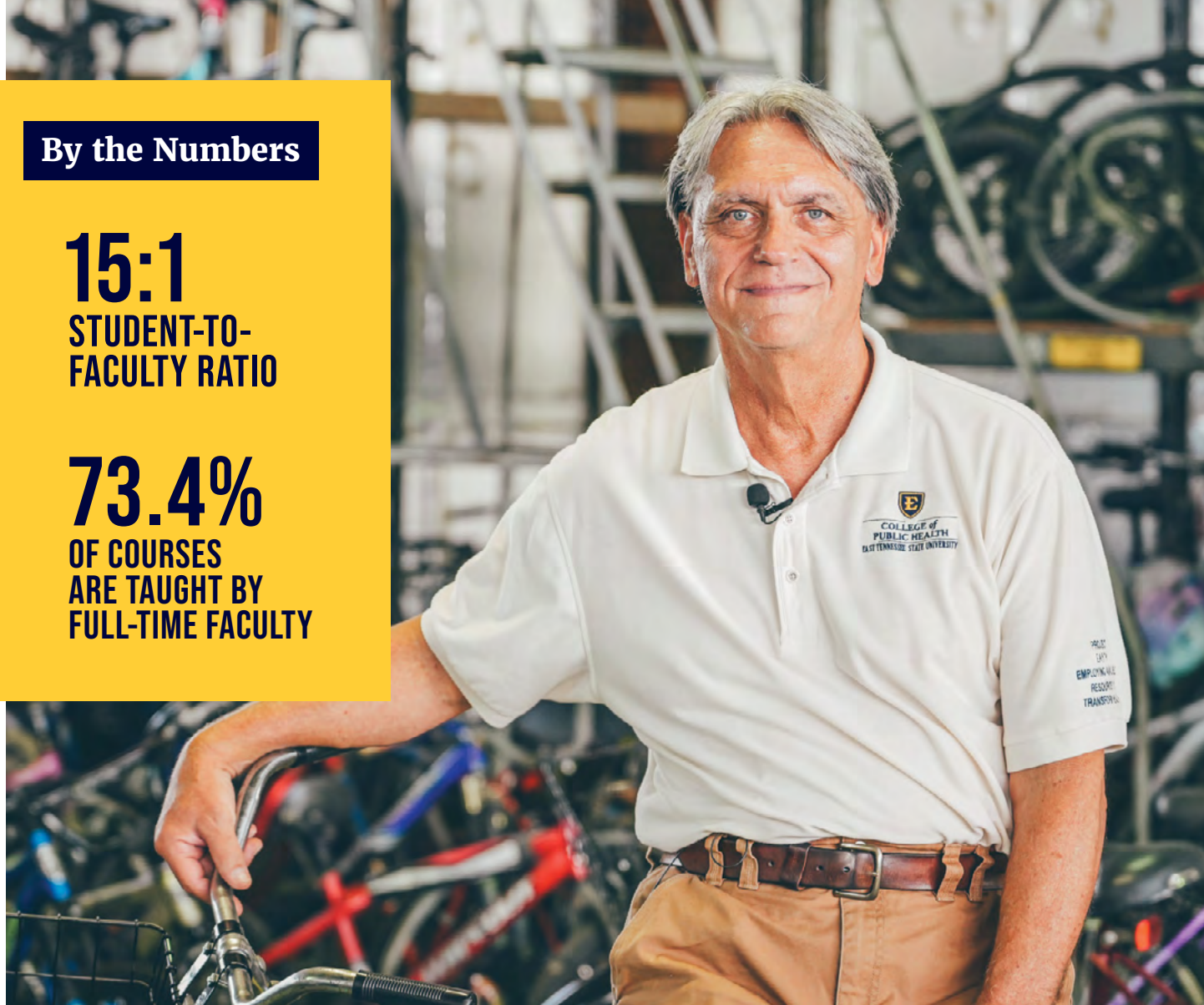
Gov. Bill Lee's 2025-26 budget includes more than \$64 million in support for ETSU projects, fueling science, medicine, and innovation across campus and throughout Appalachia.



By the Numbers

15:1
STUDENT-TO-
FACULTY RATIO

73.4%
OF COURSES
ARE TAUGHT BY
FULL-TIME FACULTY



A Pioneer in Teaching Excellence



In March, Dr. Mike Stoots, Professor in the College of Public Health's Department of Community and Behavioral Health, was honored with the 2025 Association of Schools and Programs of Public Health's (ASPPH) Teaching Excellence Award — a national distinction recognizing outstanding instruction and student mentorship.

Over his more than two decades at ETSU, Stoots has pioneered hands-on, real-world training through initiatives like Project EARTH, preparing students to work in resource-limited settings with creativity, resilience, and purpose.

His innovative approach to public health education has earned widespread acclaim and reflects ETSU's mission to improve health outcomes in Appalachia and beyond. This latest honor adds to an impressive list of accolades that includes awards for community service, innovative curriculum, and academic leadership.



**Hear Mike Stoots talk
about his commitment to
education on "Why I Teach."**

A Research Showcase



ETSU celebrated innovation and community impact during its annual Dr. Jay W. Boland Research Day on April 16.

The university-wide event brought together 270 student, resident, and fellow participants, with 93 faculty and staff members serving as judges.

Named in memory of a beloved professor who championed student research, the event showcased poster sessions, oral presentations, creative displays, and a community engagement showcase.

Forty-six students were recognized for outstanding work across diverse fields, with research topics ranging from cancer mortality trends to the role of isolation in medical education.

Community-engaged projects highlighted real-world learning experiences, including Hurricane Helene recovery efforts and initiatives to support unhoused individuals.

Dr. Jay W. Boland Research Day reflects ETSU's commitment to academic excellence, collaboration, and regional stewardship. The event is co-sponsored by the Office of Undergraduate Research and Creative Activities, the Office of the Vice Provost for Research, the Office of Community Engagement, and the Honors College.



By the Numbers

TRAILBLAZERS 2024-25

\$50,583,000

Higher Education Research
and Development (HERD)
Research Expenditures

\$16,003,246

Research Awards

\$212,863,229

Research Proposals Submitted

\$71,068,102

Research (Sponsored Programs)
Proposals Funded



Celebrating Firsts



ETSU celebrated historic firsts with two groundbreaking programs in the 2024-25 academic year.

The Doctor of Occupational Therapy program graduated its inaugural class of 16 students, while the BlueSky Tennessee Institute saw all 27 members of its first cohort earn computing degrees and job offers with BlueCross BlueShield of Tennessee. Both programs exemplify ETSU's commitment to innovation, real-world learning, and student success.



Transforming the Ashe Street Courthouse



ETSU is transforming the historic Ashe Street Courthouse into a vibrant hub for arts, education, entrepreneurship, and weather research. Through a new lease with the City of Johnson City, the renovated space will house key programs, including the Tennessee Climate Office, Tipton-Ashe Gallery, Appalachian Studies, and an Entrepreneurship Center.

This collaborative effort strengthens ETSU's connection to the community while honoring the building's legacy as a downtown Johnson City landmark.





Learning in a Hub of Innovation



Boston boasts many firsts — including the country’s first public garden, subway system, university, and police department — and offers rich opportunities in the arts. This innovative city that has been at the forefront of change for hundreds of years provides an ideal place for students to learn about culture, history, architecture, innovation, and the American justice system.

ETSU’s Boston Summer Program provides students from across the university the opportunity to study away in this historic city for two weeks of immersive learning and to participate

in community-engaged learning and professional interactions.

Through workshops, lectures, tours, and labs, the initiative placed students in world-renowned professional settings in Boston, including architectural offices, global corporations, the district attorney’s office, the Boston Police Department and its forensic science center, MIT innovation labs, Harvard University, and a lobster fishery. Students completed group projects and developed presentations featuring tangible ideas to be reviewed for implementation on ETSU’s campus.

ETSU Health: A Practice of Choice



Infectious Disease Clinic Opens in Kingsport

In 2024, ETSU Health opened a new infectious diseases clinic in Kingsport, expanding access to care for conditions like HIV/AIDS, hepatitis C, and complex infections. Located at 105 West Park Drive, the clinic enhances specialty services in the region and houses ETSU's Center of Excellence for HIV/AIDS.

This marks ETSU Health's third Kingsport location, supporting its mission to deliver expert, community-focused care.



Rheumatology Services Expanding

ETSU Health expanded its rheumatology services in both Kingsport and Johnson City, welcoming eight new providers in 2025.

Among those are seven new providers in Johnson City after Medical Specialists of Johnson City joined ETSU Health Rheumatology. Drs. Rania Al Asmar, James Baker, and Gerald Falasca also joined the Quillen College of Medicine as faculty. Dr. Suzanne Moore, a board-certified rheumatologist, joined ETSU Health Internal Medicine-Kingsport, bringing 17 years of clinical experience with her.

These additions enhance ETSU Health's mission to provide expert, team-based care and meet critical needs in Northeast Tennessee.

Forever ETSU



ETSU's spring giving campaign, Forever ETSU, raised the bar — and \$826,335 — during a weeklong celebration held April 21-27.

The campaign transformed the traditional “Day of Giving” into a broader experience that highlighted the power of philanthropy. The campaign broke records, raising \$826,335 — a 79% increase from the previous high of \$462,205 in 2024. Donations reached record highs, with faculty and staff giving increasing by 97.6% and student giving up 311%.

“In fundraising, numbers often tell the story of success,” said John King, interim Vice President of University Advancement and President/CEO of the ETSU Foundation. “But with Forever ETSU, it's the stories behind those numbers that reveal the campaign's impact.”

A key addition was “Student Day,” which introduced the Student Foundation Ambassadors (SFAs). These 12 student philanthropy advocates paired with ETSU Foundation Board mentors. Each mentor committed to match \$250 to the fund their student ambassador supported.

For students like junior Kylie Sparks, the chance to rally students to support a good cause was deeply personal. Sparks raised \$500 for the Buccaneer Student Crisis Fund after Hurricane Helene impacted her hometown.

“Student Day was my favorite part of Forever ETSU this year,” said Desmond Pierce, Executive Director of Annual Giving. “The campaign helped reframe philanthropy as a lifelong relationship with ETSU — one that begins while students are still on campus. We wanted to invite them into that vision and help cultivate a mindset of giving and connection to ETSU.”

Faculty and staff giving nearly doubled. The campaign also featured 4-2-3 Day and ended with a community celebration.

“Forever ETSU wasn't just a campaign — it represents a lifestyle and connecting everyone who's part of the ETSU story — from students to donors to alumni to employees and community members,” Pierce said.





By the Numbers

FISCAL RESPONSIBILITY
& ETSU FOUNDATION

\$11,302,585

in new gifts and pledges
for 2024-25

1,781

first-time donors in 2024-25

\$826,335

raised during Forever ETSU,
which was an increase of
more than 79% over the
previous year

President

Brian Noland

Editors/Writers

Ember Brummitt

O.J. Early

Yasmeen Elayan

Jennifer Hill

Rachel Howard

Logan Mink

Melissa Nipper

Jonathan Roberts

Jess Vodden

Photography

Ron Campbell

Matthew Carroll

Larry Smith

Charlie Warden

Southern Conference

Art Direction

Jeanette Jewell

Cody Ryans

Jess Vodden

Published by

Office of the President

Office of University Marketing
and Communications

Office of the President

officeofthepresident@etsu.edu

(423) 439-4211

etsu.edu/president

East Tennessee State University is accredited by the Southern Association of Colleges and Schools Commission on Colleges (SACSCOC) to award baccalaureate, master's, education specialist, and doctoral degrees. East Tennessee State University also may offer credentials such as certificates and diplomas at approved degree levels. Questions about the accreditation of East Tennessee State University may be directed in writing to the Southern Association of Colleges and Schools Commission on Colleges at 1866 Southern Lane, Decatur, GA 30033-4097, by calling (404) 679-4500, or by using information available on SACSCOC's website (www.sacscoc.org).







[ETSU.EDU/STRATEGY](https://etsu.edu/strategy)