

Research and Sponsored Programs

at

East Tennessee State University

Annual Report FY11

*Prepared by
The Office of Research and Sponsored Programs Administration*

<http://www.etsu.edu/research/AnnualReports/FY11/>

TBR No. 180-001-11 .005M

TABLE OF CONTENTS

Section 1. Grant Proposals & Contracts Requested and Awarded (FY90 through FY11)	1
Graphic 1. Total Sponsored Programs Activity (FY97 through FY11)	2
Section 2. Grant Proposals & Contracts Requested and Awarded by Division and Department..	3
Graphic 2. Total Sponsored Programs Activity (comparison of colleges)	7
Section 3. Grant Proposals & Contracts Requested from Sponsors	8
Requests by Agency Type	10
Requests by Project Type	11
Section 4. Grant Proposals & Contracts Awarded.....	12
Awards by Agency Type	16
Awards by Project Type	17
Section 5. Grants and Contracts Received.....	18
Office of University Advancement.....	18
Office of Enrollment Services	18
Office of Finance and Administration	18
Office of Academic Affairs	19
Office of Rural and Community Health	19
Centers	19
College of Arts and Sciences	20
College of Business and Technology.....	24
College of Clinical and Rehabilitative Health Sciences	24
College of Education	25
College of Medicine.....	26
College of Nursing.....	32
College of Public Health.....	34

Considerations:

- Grant proposals submitted in one fiscal year are not always awarded in the same fiscal year. Therefore direct comparisons should not be made between the number of proposals submitted and the number of awards received in a given fiscal year, nor the amount requested and the amount received.
- Some of the awards listed as State-funded also have Federal money as part of the total award. For these particular awards, each is specified in the State section with the State dollar amount; the portion of the amount from the Federal agency flowing through the State is included in the lump sum amount listed as “Federal flow-through money”.

Acronyms used in this report:

Admin = Administrative offices

Centers = Centers of Excellence

CAS = College of Arts and Sciences

CAST = College of Applied Science and Technology (merged with COB in FY 03)

CCRHS = College of Clinical and Rehabilitative Health Sciences (formed in FY08)

COB = College of Business (merged with CAST in FY 03)

COBT = College of Business and Technology (combined CAST and COB in FY 03)

COE = College of Education

COM = College of Medicine

CON = College of Nursing

COP = College of Pharmacy

CPAH = College of Public and Allied Health (divided into CPH and CCRHS in FY08)

CPH = College of Public Health (formed in FY08)

SCS = School of Continuing Studies

ORCH = Office of Rural and Community Health

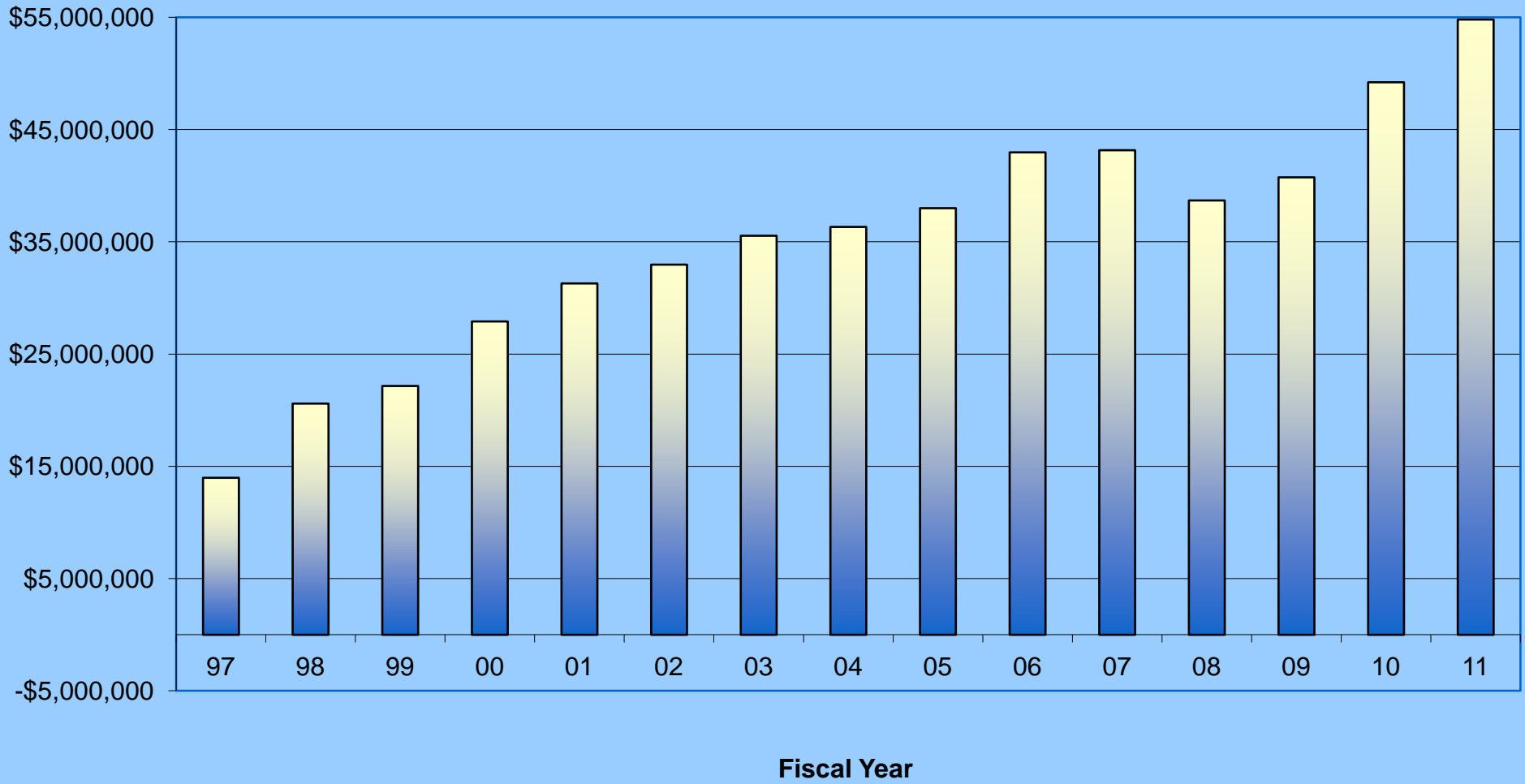
TN = Tennessee

Table 1. Grant proposals and contracts submitted and awarded FYs 1990 – 2011.

Fiscal Year	Number Submitted	Total Requested	Number Awarded	Total Federal Funds Awarded	Total Awarded
1990	212	25,891,621	129	3,144,690	6,690,853
1991	213	33,696,476	116	2,628,324	6,405,469
1992	225	28,257,347	132	3,489,209	10,885,943
1993	232	28,207,416	164	4,416,674	13,482,064
1994	241	34,586,980	124	2,461,238	8,797,076
1995	248	46,857,741	144	4,044,382	12,005,537
1996	265	52,131,589	189	4,243,248	13,323,465
1997	307	46,245,449	172	4,734,609	13,985,241
1998	321	60,495,224	187	6,155,361	20,596,210
1999	287	47,008,532	187	6,877,435	22,164,122
2000	276	51,018,819	176	8,304,272	27,912,726
2001	275	52,169,601	193	9,351,126	31,300,521
2002	300	86,788,650	181	10,778,425	32,975,663
2003	291	87,316,579	159	11,468,714	35,546,106
2004	308	71,425,332	175	12,422,446	36,333,065
2005	318	70,107,108	198	13,259,147	38,003,277*
2006	348	74,365,922	226	27,482,414	42,975,074
2007	335	150,862,801	257	18,469,946	43,166,261
2008	335	75,335,784	298	18,942,484	39,691,883
2009	324	102,533,416	268	13,812,509	40,701,308
2010	314	105,165,783	227	25,340,273	49,219,792
2011	282	85,087,381	267	39,512,605	54,808,372

*Includes amount awarded to the ETSU Research Foundation.

ETSU Total Sponsored Programs Activity



Section 2.

Grant Proposals & Contracts Requested and Awarded by Division and Department (FY11)

	Requests		Awards			
	Amount	No.	Continuations Amount	No.	New Amount	No.
OFFICE OF THE PRESIDENT						
Athletics						
President's Office						
University Relations						
<i>Subtotals</i>	\$0	0	\$0	0	\$0	0
<i>Total Continuations and New</i>					\$0	0
UNIVERSITY ADVANCEMENT						
WETS-FM	\$68,815	1	\$55,248	1	\$51,612	1
<i>Subtotals</i>	\$68,815	1	\$55,248	1	\$51,612	1
<i>Total Continuations and New</i>					\$106,860	2
OFFICE OF ACADEMIC AFFAIRS						
Office of Research & Sponsored Programs	\$238,334	3			\$293,334	5
Office of the Registrar						
Library Administration	\$10,149	1	\$116,497	2	\$10,149	1
Undergraduate Student Advisement						
<i>Subtotals</i>	\$248,483	4	\$116,497	2	\$303,483	6
<i>Total Continuations and New</i>					\$419,980	8
OFFICE OF STUDENT AFFAIRS						
Counseling Center						
Disability Services						
Housing and Residence Life						
Student Life & Leadership						
Student Organization Resource Center						
<i>Subtotals</i>	\$0	0	\$0	0	\$0	0
<i>Total Continuations and New</i>					\$0	0
ENROLLMENT SERVICES						
TRIO Programs	\$3,671,011	4	\$1,993,081	7	\$13,763	1
Financial Aid Office	\$48,000	1			\$48,000	1
<i>Subtotals</i>	\$3,719,011	5	\$1,993,081	7	\$61,763	2
<i>Total Continuations and New</i>					\$2,054,844	9

	Requests		Awards			
	Amount	No.	Continuations Amount	No.	New Amount	No.
CENTERS						
Center for Appalachian Studies & Services	\$215,500	2			\$511,400	3
Center for Early Childhood Learning & Development	\$3,622,442	11	\$931,933	3	\$1,140,285	6
Center for Community Outreach & Family Services	\$327,229	1	\$11,210,430	2	\$1,073,491	2
Subtotals	\$4,165,171	14	\$12,142,363	5	\$2,725,176	11
Total Continuations and New					\$14,867,539	16

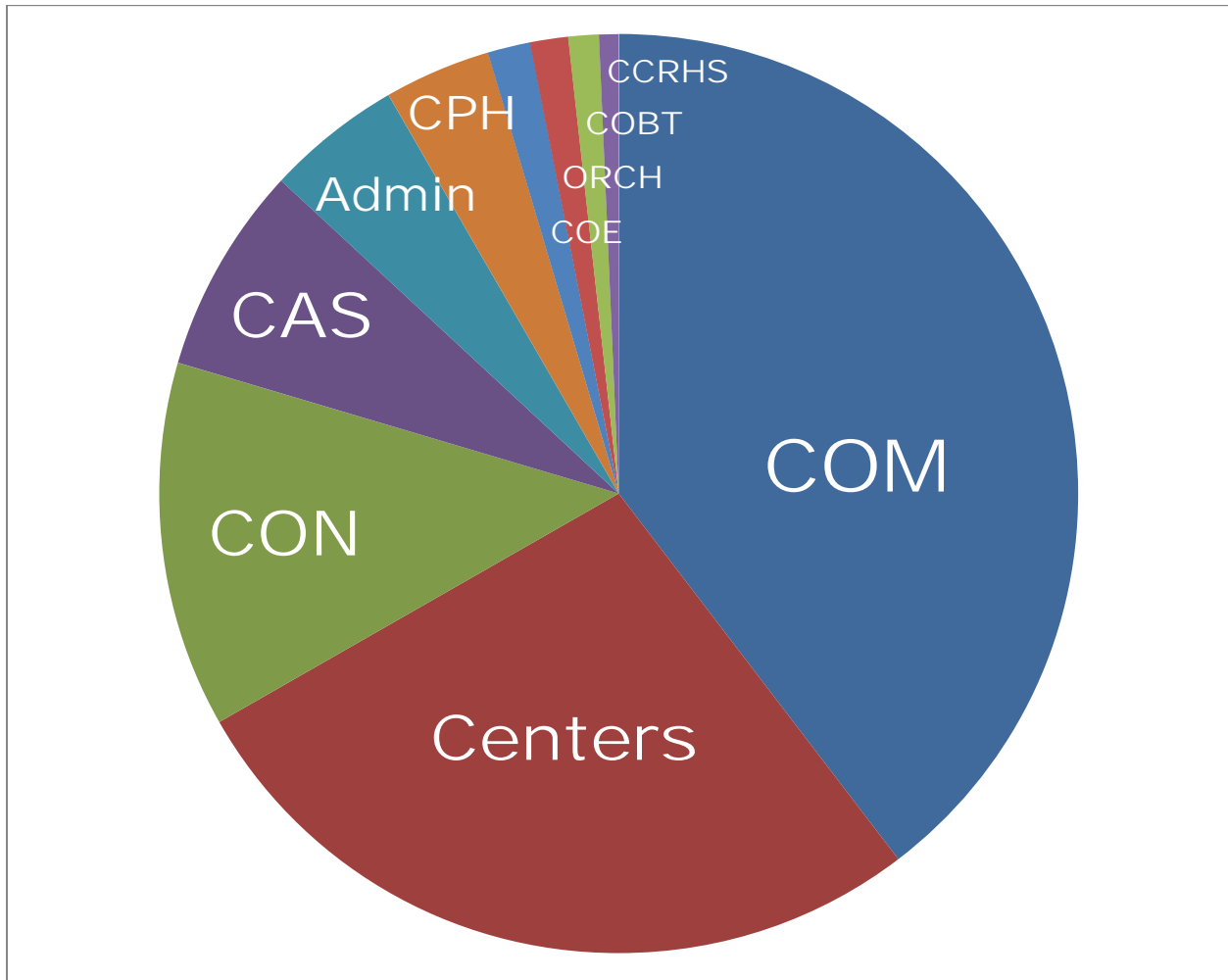
COLLEGE OF ARTS & SCIENCES						
Dean's Office	\$1,999,364	1	\$587,483	1	\$499,841	1
Art & Design	\$176,864	1				
Biological Sciences	\$3,839,169	21	\$257,081	2	\$69,470	5
Chemistry	\$416,106	4	\$3,690	1	\$28,000	1
Communication						
Criminal Justice & Criminology						
English						
Foreign Languages	\$49,000	3	\$39,040	1	\$12,000	2
Geosciences	\$1,049,409	5	\$273,572	4	\$199,650	2
History	\$24,830	1	\$20,000	1		
Mathematics	\$2,120,815	5	\$288,372	2	\$38,726	1
Music						
NHM & Fossil Site	\$166,021	3				
Philosophy & Humanities					\$30,254	1
Physics and Astronomy	\$416,585	16	\$139,929	3	\$138,921	6
Political Science						
Psychology	\$1,323,286	7	\$135,423	3	\$459,039	7
Social Work	\$2,289,115	2			\$753,031	1
Sociology & Anthropology	\$166,667	5			\$29,105	3
Subtotals	\$14,037,231	74	\$1,744,590	18	\$2,258,037	30
Total Continuations and New					\$4,002,627	48

COLLEGE OF BUSINESS & TECHNOLOGY						
Dean's Office	\$160,000	2			\$80,000	1
Bureau of Business & Economic Research	\$60,050	2	\$52,332	1	\$67,550	3
Center for Banking						
Computer & Information Sciences						
Economics, Finance & Urban Studies						
Engineering, Technology, Surveying and Digital Media	\$142,316	5			\$123,616	4
Family & Consumer Sciences						
Management & Marketing						
Small Business Development Center	\$518,616	1	\$42,306	1	\$220,193	1
Subtotals	\$880,982	10	\$94,638	2	\$491,359	9
Total Continuations and New					\$585,997	11

	Requests		Awards			
	Amount	No.	Continuations Amount	No.	New Amount	No.
COLLEGE OF EDUCATION						
Dean's Office						
Curriculum & Instruction	\$310,072	5			\$5,526	2
Educational Leadership & Policy Analysis						
Human Development & Learning	\$1,949,676	7	\$385,756	2	\$125,431	4
Kinesiology, Leisure, & Sport Sciences	\$12,000	1	\$50,000	1	\$59,076	8
Math and Science Center of Excellence	\$418,504	4			\$194,998	2
University School						
	Subtotals	17	\$435,756	3	\$385,031	16
	Total Continuations and New				\$820,787	19
COLLEGE OF MEDICINE						
Dean's Office	\$8,046,434	1	\$3,152,733	3	\$8,440,000	1
Academic Affairs						
Anatomy & Cell Biology						
Biochemistry & Molecular Biology	\$3,715,738	5	\$496,233	5	\$124,502	2
Biomedical Grad						
Continuing Medical Education	\$430,710	3			\$58,147	1
Cultural Affairs					\$38,714	1
Family Medicine	\$752,671	3	\$489,604	2	\$750,172	4
Geriatrics & Gerontology	\$30,494	1			\$30,494	1
Government Relations						
Internal Medicine	\$11,105,302	31	\$221,000	1	\$1,365,743	16
Laboratory Animals Resources						
Learning Resources	\$13,500	4			\$22,924	7
Microbiology	\$6,733,721	6			\$6,552	1
Obstetrics & Gynecology						
Pathology	\$656,653	10			\$725,741	9
Pediatrics	\$1,284,909	15	\$74,088	3	\$1,176,409	15
Pharmacology	\$2,350,737	7	\$2,077,878	7	\$205,752	6
Physiology	\$1,469,696	3	\$82,500	1	\$18,336	1
Psychiatry & Behavioral Sciences	\$40,000	1	\$170,544	2	\$536,717	2
Student Affairs						
Surgery	\$3,864,695	5	\$1,032,867	7	\$407,615	2
	Subtotals	95	\$7,797,447	31	\$13,907,818	69
	Total Continuations and New				\$21,705,265	100
COLLEGE OF NURSING						
Dean's Office	\$706,216	2	\$218,240	3	\$3,447,152	1
Center for Nursing Research	\$148,099	3			\$59,243	1
Practice & Research	\$9,640,689	27			\$3,329,355	26
	Subtotals	32	\$218,240	3	\$6,835,750	28
	Total Continuations and New				\$7,053,990	31

	Requests		Awards			
	Amount	No.	Continuations Amount	No.	New Amount	No.
COLLEGE OF PHARMACY						
Dean's Office						
Pharmaceutical Sciences						
Pharmacy Practice	\$357,500	1				
<i>Subtotals</i>	\$357,500	1	\$0	0	\$0	0
<i>Total Continuations and New</i>					\$0	0
COLLEGE OF PUBLIC HEALTH						
Dean's Office	\$3,272,299	4			\$667,500	3
Biostatistics and Epidemiology	\$306,333	4				
Community Health	\$1,622,437	3			\$1,286,118	3
Environmental Health	\$385,246	4			\$15,000	1
Health Sciences	\$1,735,482	5			\$29,200	1
Health Services Administration			\$55,939	1		
<i>Subtotals</i>	\$7,321,797	20	\$55,939	1	\$1,997,818	8
<i>Total Continuations and New</i>					\$2,053,757	9
SCHOOL OF CONTINUING STUDIES						
Professional Development						
Tennessee Institute for Economic Development						
<i>Subtotals</i>	\$0	0	\$0	0	\$0	0
<i>Total Continuations and New</i>					\$0	0
OFFICE OF RURAL & COMMUNITY HEALTH						
Academic Affairs						
Health Sciences	\$293,678	1	\$434,628	2	\$293,678	1
<i>Subtotals</i>	\$293,678	1	\$434,628	2	\$293,678	1
<i>Total Continuations and New</i>					\$728,306	3
HONORS COLLEGE						
Undergraduate Research						
<i>Subtotals</i>	\$0	0	\$0	0	\$0	0
<i>Total Continuations and New</i>					\$0	0
SUBTOTALS			\$25,426,736	78	\$29,381,637	189
GRAND TOTALS	\$85,087,381	282			\$54,808,372	267

ETSU Awards, FY11
\$54,808,372



<i>College of Medicine</i>	<i>\$21,705,265</i>	<i>39.60%</i>	<i>College of Public Health</i>	<i>\$2,053,757</i>	<i>3.75%</i>
<i>Centers</i>	<i>\$14,867,539</i>	<i>27.13%</i>	<i>College of Education</i>	<i>\$820,787</i>	<i>1.50%</i>
<i>College of Nursing</i>	<i>\$7,053,990</i>	<i>12.87%</i>	<i>Office of Rural and Community Health</i>	<i>\$728,306</i>	<i>1.33%</i>
<i>College of Arts and Sciences</i>	<i>\$4,002,627</i>	<i>7.30%</i>	<i>College of Business and Technology</i>	<i>\$585,997</i>	<i>1.07%</i>
<i>Offices of Academic Affairs, Finance & Administration, Advancement and Enrollment Services</i>	<i>\$2,613,184</i>	<i>4.77%</i>	<i>College of Clinical & Rehabilitative Health Sciences</i>	<i>\$376,921</i>	<i>0.69%</i>

Section 3.

Grant Proposals & Contracts Requested from Sponsors (FY11)

FEDERAL Total Requested: \$60,375,770

<u>Funding Agency</u>	<u>No.</u>	<u>Amount Requested</u>	<u>Funding Agency</u>	<u>No.</u>	<u>Amount Requested</u>
National Institutes of Health	39	\$30,778,134	U.S. Department of Defense	1	\$109,500
Health Resources & Services Administration	9	\$10,664,721	U.S. Department of Justice	1	\$100,000
National Science Foundation	27	\$ 9,276,983	U.S. Environmental Protection Agency	1	\$99,963
U.S. Department of Education	5	\$ 6,589,761	Veterans Affairs Medical Center	3	\$45,196
Substance Abuse & Mental Health Services Administration	1	\$ 1,483,099	National Endowment for the Humanities	1	\$24,830
U.S. Department of Agriculture	3	\$413,550	National Institute for Occupational Safety and Health	1	\$19,791
Appalachian Regional Commission	2	\$381,678	National Aeronautics and Space Administration	10	\$0
Tennessee Valley Authority	2	\$211,700			
National Endowment for the Arts	1	\$176,864			

STATE Total Requested: \$17,731,243

<u>Funding Agency</u>	<u>No.</u>	<u>Amount Requested</u>	<u>Funding Agency</u>	<u>No.</u>	<u>Amount Requested</u>
TN Bureau of TennCare	1	\$8,046,434	TN Governor's Highway Safety Office	3	\$235,334
Middle TN State University	2	\$2,777,709	University of Tennessee Center for Industrial Services	2	\$160,000
TN Department of Health	14	\$1,753,690	TN Department of Mental Health	1	\$136,441
TN Department of Education	10	\$1,655,249	TN Board of Regents	1	\$50,000
TN Higher Education Commission	9	\$1,053,834	TN Office of Aeronautics	1	\$44,000
State of TN	4	\$887,971	TN Tech University	1	\$25,000
TN Department of Human Services	1	\$327,229	TN Department of State	1	\$10,149
TN State University	1	\$325,002	TN Supreme Court Administrative Office of the Courts	1	\$3,300
TN Department of Transportation	2	\$239,901			

INDUSTRY Total Requested: \$1,185,033

<u>Funding Agency</u>	<u>No.</u>	<u>Amount Requested</u>	<u>Funding Agency</u>	<u>No.</u>	<u>Amount Requested</u>
Wellmont Health Systems	2	\$706,216	Cherokee Health Systems	1	\$20,000
Mountain States Health Alliance	6	\$218,197	GlaxoSmithKline	1	\$12,800
Cempra Pharmaceuticals	1	\$74,502	Pfizer Pharmaceuticals	1	\$7,500
Frontier Health, Inc.	2	\$36,900	King Pharmaceuticals	1	\$5,195
TN Opportunity Programs, Inc.	1	\$30,022	Bristol Regional Speech and Hearing Center	1	\$3,000
CSL Behring	4	\$25,400	Watauga Hearing Conservation, Inc.	1	\$3,000
State Farm Insurance Company	1	\$21,200			
Merz Pharmaceuticals	1	\$21,101			

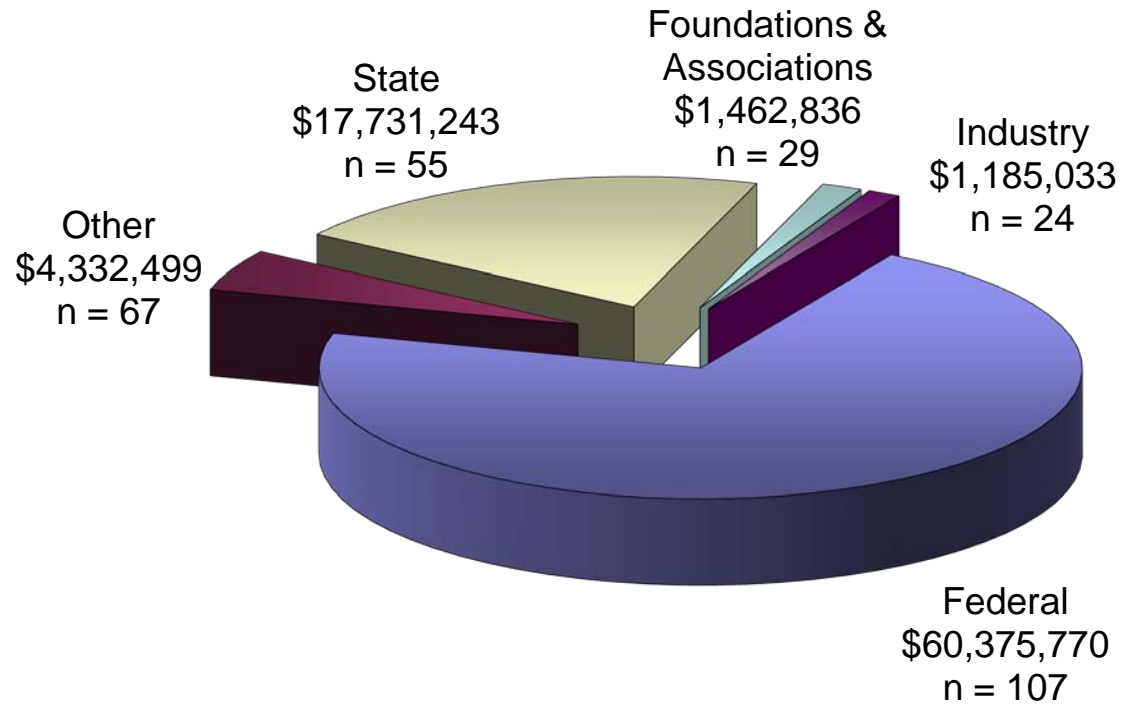
OTHER**Total Requested: \$4,332,499**

Funding Agency	No.	Amount Requested	Funding Agency	No.	Amount Requested
Medical Education Assistance Corporation (MEAC)	22	\$1,596,351	Vanderbilt University	3	\$22,617
Midwest Research Institute	1	\$848,069	National Institute of Justice	1	\$20,000
Wake Forest University	7	\$465,444	Mountain Home Research and Education Corporation	2	\$19,000
Upper East Tennessee Counties	1	\$337,794	Various Sponsors	2	\$16,350
Johnson City Schools	2	\$162,241	Mountainview Pediatrics	1	\$10,000
North Carolina Agromedicine Institute	1	\$140,456	National Networks of Public Health Institutes	1	\$10,000
Washington County, TN	3	\$133,033	Oak Ridge Associated Universities	1	\$5,000
Plural Publishing	2	\$101,552	University of Wisconsin Population Health Institute	1	\$4,800
Women's Wellness and Maternity Center	2	\$98,099	Evo-Devo-Echo Network	1	\$3,000
University of Tennessee	2	\$68,182	Heal Appalachia	1	\$2,000
City of Johnson City, TN	1	\$60,000	University of Colorado	1	\$1,974
ACS Petroleum Research Fund	1	\$50,000	Appalachian Trail Conservancy - North Carolina	1	\$774
University of Hawaii	1	\$49,090	Friends of Roan Mountain	1	\$700
Michal Child Development Center	1	\$44,531	European Southern Observatory / Very Large Telescope	1	\$0
Arizona State University	1	\$32,442			
East Tennessee Human Resources Agency	1	\$29,000			

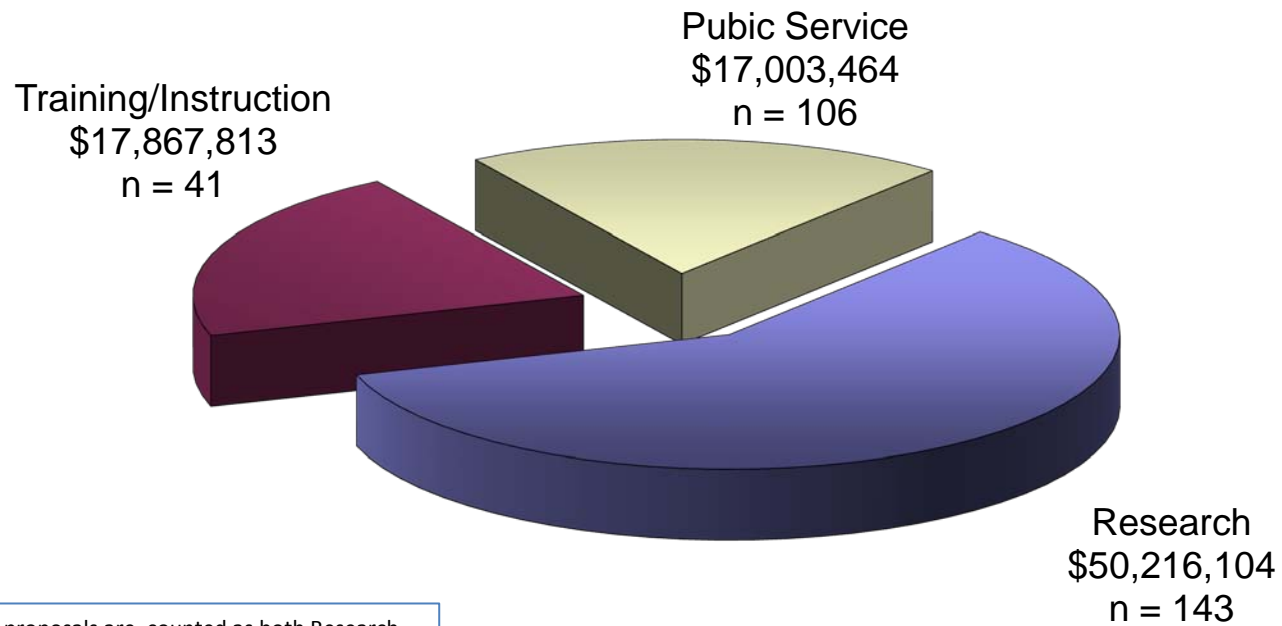
FOUNDATIONS AND ASSOCIATIONS**Total Requested: \$1,462,836**

Funding Agency	No.	Amount Requested	Funding Agency	No.	Amount Requested
American Heart Association - National	1	\$308,000	Southern Medical Association	1	\$30,494
Niswonger Foundation	2	\$305,905	Leakey Foundation	1	\$19,745
Autism Speaks	2	\$131,611	American Heart Association - Greater Southeast Affiliate	1	\$13,500
Robert Wood Johnson Foundation	2	\$105,200	National Network of Libraries of Medicine	4	\$13,500
Google Foundation	1	\$100,656	Water Resources, LLC	1	\$11,568
Progeria Research Foundation	1	\$100,000	American Academy of Nurse Practitioners	1	\$10,000
Foundation Endowment, The	1	\$89,138	Orelena Hawks Puckett Institute	1	\$10,000
ETSU Research Foundation	2	\$76,852	American Nurses Foundation	1	\$3,500
Susan G. Komen for the Cure, Tri-Cities, TN Affiliate	1	\$47,607	Overmountain Victory Trail Association	1	\$3,000
Alternatives Research and Development Foundation	1	\$40,000	TN Nurses Foundation	1	\$2,000
Diabetes Action Research and Education Foundation	1	\$40,000	TN Physical Therapy Association	1	\$560

FY11 Requests by Agency Type



FY11 Requests by Project Type



Note: 4 proposals are counted as both Research and Public Service; 4 proposals are counted as both Public Service and Training; their amounts are equally divided between the associated Project Types.

Section 4.

Grant Proposals & Contracts Awarded (FY11)

FEDERAL **Total Awarded: \$39,512,605**

Funding Agency	Continuations		New		Subtotal	
	Amount	No.	Amount	No.	Amount	No.
National Institutes of Health	\$7,077,236	20	\$1,892,168	6	\$8,969,404	26
Health Resources and Services Administration	\$187,154	2	\$7,166,337	12	\$7,353,491	14
U.S. Department of Education	\$2,619,518	10	\$29,052	1	\$2,648,570	11
National Science Foundation	\$1,446,920	8	\$621,953	5	\$2,068,873	13
Appalachian Regional Commission	\$200,000	1	\$381,678	2	\$581,678	3
Veterans Affairs Medical Center	\$234,628	1	\$74,336	4	\$308,964	5
National Oceanic and Atmospheric Administration			\$166,667	1	\$166,667	1
National Aeronautics and Space Administration			\$55,712	2	\$55,712	2
Corporation for Public Broadcasting	\$55,248	1			\$55,248	1
National Park Service, U.S. Dept of the Interior			\$32,983	1	\$32,983	1
National Endowment for the Humanities			\$30,254	1	\$30,254	1
Tennessee Valley Authority	\$10,000	1	\$15,000	1	\$25,000	2
U.S. Department of Agriculture			\$13,763	1	\$13,763	1
Federal Flow-Through	\$8,875,099		\$8,326,899		\$17,201,998	

STATE **Total Awarded: \$9,763,375**

Funding Agency	Continuations		New		Subtotal	
	Amount	No.	Amount	No.	Amount	No.
TN Department of Human Services	\$2,682,655	1	\$285,370	1	\$2,968,025	2
TN Bureau of TennCare			\$2,306,166	2	\$2,306,166	2
Middle Tennessee State University			\$973,224	2	\$973,224	2
TN Department of Education	\$550,847	6	\$316,494	9	\$867,341	15
TN Department of Health	\$68,000	2	\$711,401	11	\$779,401	13
TN State University			\$522,938	1	\$522,938	1
TN Higher Education Commission			\$502,000	3	\$502,000	3
State of Tennessee			\$451,199	4	\$451,199	4
Watauga Regional Library	\$99,007	1			\$99,007	1
TN Board of Regents	\$39,040	1	\$50,000	1	\$89,040	2
University of Tennessee Center for Industrial Services			\$80,000	1	\$80,000	1
University of Tennessee			\$68,182	2	\$68,182	2
TN Office of Aeronautics			\$44,000	1	\$44,000	1
TN Department of Mental Health			\$35,244	1	\$35,244	1
TN Tech University			\$25,000	1	\$25,000	1
Northeast State Technical Community College	\$17,490	1			\$17,490	1
TN Supreme Court Administrative Office of the Courts			\$3,300	1	\$3,300	1
Office of Criminal Justice Programs			\$0	1	\$0	1
TN Department of Environment and Conservation			\$0	1	\$0	1
TN Department of State			\$0	1	\$0	1
TN Governor's Highway Safety Office			\$0	2	\$0	2

INDUSTRY**Total Awarded: \$1,283,647**

Funding Agency	Continuations		New		Subtotal	
	Amount	No.	Amount	No.	Amount	No.
Wellmont Health Systems	\$391,740	3			\$391,740	3
Mountain States Health Alliance	\$67,939	2	\$188,197	10	\$256,136	12
Elan Pharmaceuticals	\$150,844	1			\$150,844	1
Frontier Health, Inc.			\$90,900	3	\$90,900	3
Soterion Health Care Group, LLC			\$81,929	1	\$81,929	1
TN Opportunity Programs, Inc.			\$81,913	2	\$81,913	2
Cempra Pharmaceuticals			\$74,502	1	\$74,502	1
Holston Business Group, Inc.	\$42,306	1			\$42,306	1
CSL Behring			\$25,400	4	\$25,400	4
Merz Pharmaceuticals			\$21,101	1	\$21,101	1
Cherokee Health Systems			\$20,000	1	\$20,000	1
GlaxoSmithKline			\$12,800	1	\$12,800	1
Friends-in-Need Health Care Center			\$12,000	1	\$12,000	1
Polar Electro, Inc.			\$8,576	1	\$8,576	1
Pfizer Pharmaceuticals			\$7,500	1	\$7,500	1
Bristol Regional Speech and Hearing Center			\$3,000	1	\$3,000	1
Watauga Hearing Conservation, Inc.			\$3,000	1	\$3,000	1

OTHER**Total Awarded: \$3,355,346**

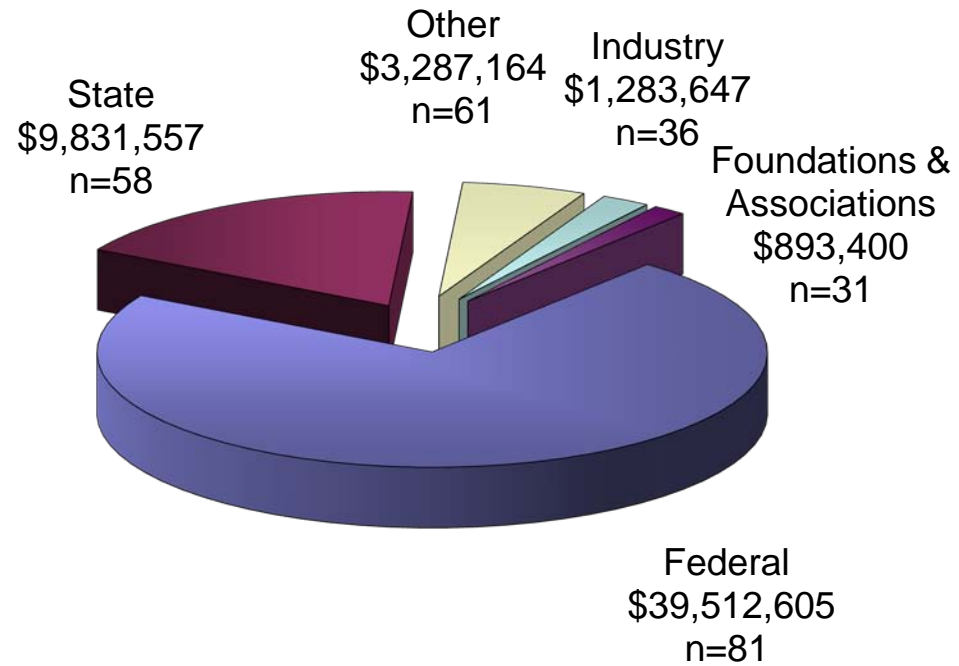
Funding Agency	Continuations		New		Subtotal	
	Amount	No.	Amount	No.	Amount	No.
Medical Education Assistance Corporation	\$175,825	4	\$1,596,351	22	\$1,772,176	26
Upper East Tennessee Counties			\$426,882	1	\$426,882	1
Alliance for Business and Training	\$47,075	1	\$258,147	1	\$305,222	2
Washington County Department of Education			\$103,533	2	\$103,533	2
Johnson City Schools			\$80,241	1	\$80,241	1
Duke University	\$62,224	1			\$62,224	1
Women's Wellness and Maternity Center			\$59,243	1	\$59,243	1
University of Rhode Island	\$55,880	1			\$55,880	1
Community Health Network			\$54,076	1	\$54,076	1
Ithaca College	\$50,000	1			\$50,000	1
City of Johnson City, TN			\$46,124	2	\$46,124	2
Michal Child Development Center			\$44,531	1	\$44,531	1
East Tennessee Human Resources Agency			\$29,000	1	\$29,000	1
ACS Petroleum Research Fund			\$28,000	1	\$28,000	1
Wake Forest University			\$25,000	3	\$25,000	3
Vanderbilt University			\$22,037	2	\$22,037	2
Hawkins County, TN Department of Education	\$7,693	1	\$14,000	1	\$21,693	2
Heritage Alliance	\$20,000	1			\$20,000	1
Georgia Institute of Technology	\$19,187	1			\$19,187	1
Various Sponsors			\$16,350	2	\$16,350	2
Eureka Scientific Institute	\$10,847	1			\$10,847	1
National Networks of Public Health Institutes			\$10,000	1	\$10,000	1
Mountainview Pediatrics			\$9,500	1	\$9,500	1
University of Rochester	\$7,170	1			\$7,170	1
Greeneville Ear, Nose and Throat Associates			\$3,000	1	\$3,000	1
Mountain Home Research and Education Corporation			\$2,500	1	\$2,500	1
University of Colorado			\$1,974	1	\$1,974	1
Appalachian Trail Conservancy - North Carolina			\$774	1	\$774	1

FOUNDATIONS AND ASSOCIATIONS**Total Awarded: \$893,400**

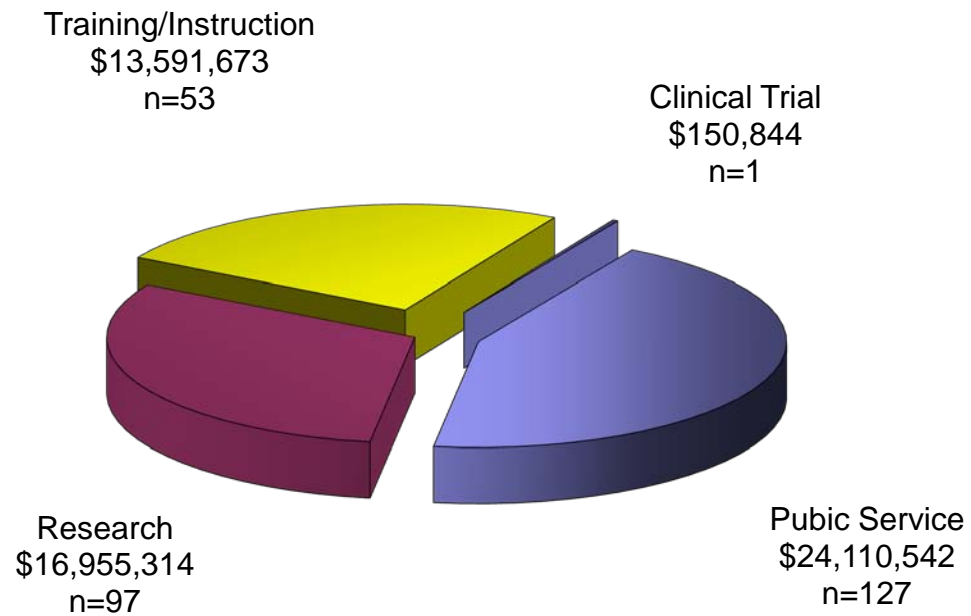
Funding Agency	Continuations		New		Subtotal	
	Amount	No.	Amount	No.	Amount	No.
American Heart Association - Greater Southeast Affiliate	\$165,000	2	\$96,000	2	\$261,000	4
University of Kentucky Research Foundation			\$90,000	1	\$90,000	1
Foundation Endowment, The			\$89,138	1	\$89,138	1
American Heart Association - National			\$77,000	1	\$77,000	1
ETSU Research Foundation	\$3,690	1	\$59,649	2	\$63,339	3
National Network of Libraries of Medicine			\$62,924	8	\$62,924	8
Autism Speaks			\$59,677	1	\$59,677	1
Robert Wood Johnson Foundation			\$55,200	2	\$55,200	2
Progeria Research Foundation			\$50,000	1	\$50,000	1
Southern Medical Association			\$30,494	1	\$30,494	1
American Psychological Foundation			\$15,000	1	\$15,000	1
Water Resources, LLC			\$11,568	1	\$11,568	1
American Academy of Nurse Practitioners			\$10,000	1	\$10,000	1
Orelena Hawks Puckett Institute			\$10,000	1	\$10,000	1
American Nurses Foundation			\$3,500	1	\$3,500	1
Overmountain Victory Trail Association			\$3,000	1	\$3,000	1
American Academy of Pediatrics			\$1,000	1	\$1,000	1
TN Physical Therapy Association			\$560	1	\$560	1

This page intentionally left blank.

FY11 Awards by Agency Type



FY11 Awards by Project Type



3 awards are counted as both Research and Public Service; 8 awards are counted as both Public Service and Training; the amounts are equally divided between the associated Project Types.

Section 5.

Grants and Contracts Awarded in FY11

* denotes new awards

Office of University Advancement

WETS Campus Radio FM

Winkler, Wayne

Corporation for Public Broadcasting, "Community Service Grant 2009-2011"	\$55,248	
ETSU Research Foundation, "Conversion Grant"	\$51,612	*

Office of Enrolment Services

Financial Aid, Office of

Johnson, Cindy

State of Tennessee, "Medical and Nursing Education Programs to the TN Rural Health Loan Forgiveness Scholarship Recipients"	\$48,000	*
---	----------	---

TRIO

Gross, Ronnie

U.S. Department of Education, "ETSU Upward Bound - Johnson City"	\$452,323	
U.S. Department of Education, "Student Support Services"	\$301,692	
U.S. Department of Education, "ETSU Veterans Upward Bound"	\$260,466	
U.S. Department of Education, "Ronald McNair Post-Baccalaureate Program"	\$252,000	
U.S. Department of Education, "ETSU at Bristol Upward Bound"	\$250,000	
U.S. Department of Education, "ETSU at Kingsport Upward Bound"	\$250,000	
U.S. Department of Education, "TRIO Educational Opportunity Center"	\$226,600	
U.S. Department of Agriculture, "Upward Bound Summer Food Program 2010"	\$13,763	*

Office of Finance and Administration

Public Safety

Cotrel, Jack

TN Governor's Highway Safety Office, "Law Enforcement Network Coordinator"	\$16,500	*
Office of Criminal Justice Programs, "Law Enforcement Equipment"	\$15,000	*

Office of Academic Affairs

Library Administration

Flanigan, Jean

TN Department of State, "On-line interlibrary loan system" \$10,149 *

Szarejko, Celia

Watauga Regional Library, "Library Automation Agreement--WRL" \$99,007

Northeast State Technical Community College, "Library Automation Agreement -- NSTCC" \$17,490

Research and Sponsored Programs, Office of

Duncan, William R

Veterans Affairs Medical Center, "IRB Services to the VAMC" \$50,000 *

Mountain States Health Alliance, "To Provide IRB Services for MSHA" \$30,000 *

Various Sponsors, "IRB Review Services" \$6,000 *

Veterans Affairs Medical Center, "IRB Manager Services" \$5,000 *

Preston, Betsy

TN Governor's Highway Safety Office, "Child Passenger Safety Training and Community Education 2010-2011" \$202,334 *

Office of Rural and Community Health

Behringer, Bruce

Appalachian Regional Commission, "Appalachian Regional Commission Substance Abuse Program 2011" \$293,678 *

Veterans Affairs Medical Center, "Veterans Rural Health Professionals Institute" \$234,628

Appalachian Regional Commission, "Comprehensive Cancer Control Plans Implementation in Appalachian Communities" \$200,000

Centers

Center for Appalachian Studies

Herrin, Roberta

TN Higher Education Commission, "Center of Excellence in Appalachian Studies 2010-11" \$295,900 *

TN Department of Education, "Governor's School for the Scientific Exploration of Tennessee Heritage" \$127,500 *

Appalachian Regional Commission, "Appalachian Teaching Project 2011-2012" \$88,000 *

Center for Community Outreach & Family Services

Leger, Robert

TN Department of Human Services, "Families First Zone E"	\$10,730,620	
TN Department of Human Services, "Family Services Counseling District 1 and 2"	\$815,344	*
U.S. Department of Education, "Gear Up"	\$479,810	
Alliance for Business and Training, "WIA Youth Grant"	\$258,147	*

Center for Early Childhood Learning and Development

Fox, James

TN Department of Education, "ETSU 'Make a Difference Positive Behavior Support' Project"	\$356,148	
--	-----------	--

Isbell, Rebecca

TN State University, "TECTA -- Tennessee Early Childhood Training Alliance"	\$522,938	*
TN Department of Education, "TEIS: Technical Assistance"	\$250,000	*
TN Higher Education Commission, "Center of Excellence in Early Childhood"	\$183,600	*

Nelson, Donna

TN Department of Education, "Early Intervention Project"	\$481,490	
Orelena Hawks Puckett Institute, "Model Demonstration Center on Contextually-Mediated Everyday Child Language Intervention Practices"	\$10,000	*

Ongie, Alissa

TN Department of Education, "SIG: Preschool Literacy Training Project"	\$93,506	*
--	----------	---

Wiginton, Beverly

U.S. Department of Education, "CCAMPIS at Child Study Center & Little Bucs"	\$94,295	
Johnson City Schools, "SOAC -- Supportive Opportunities for All Children at Little Bucs"	\$80,241	*

College of Arts and Sciences

Biological Sciences

Ahmad, Zulfiqar

National Institutes of Health, "Molecular Modulation of the Catalytic Sites of <i>Escherichia coli</i> F1Fo ATP synthase"	\$71,500	
---	----------	--

Kumar, Dharendra

National Science Foundation, "RUI: Identification and characterization of cellular effectors of SABP2, its subcellular localization, and role in non-R-gene mediated disease resistance in plants"	\$56,336	*
National Science Foundation, "Supplement to RUI: Identification and characterization of cellular effectors of SABP2, its subcellular localization, and role in non-R-gene mediated disease resistance in plants"	\$4,860	*

Levy, Foster			
Wake Forest University, <i>"Efficacy of the standard antibiotic dosage in obese patients"</i>	\$5,000	*	
Mountain Home Research and Education Corporation, <i>"Daptomycin use of antimicrobial prophylaxis in orthopedic prosthetic joint surgery"</i>	\$2,500	*	
Appalachian Trail Conservancy - North Carolina, <i>"Demography and Disease of Gray's Lily on Roan Mountain"</i>	\$774	*	
Liu, Yusheng			
National Science Foundation, <i>"Exploring the Neogene Plant Record of Global Vegetational and Climatic Changes in Eastern North America"</i>	\$185,581		
<u>Chemistry</u>			
Sun, Peng			
ACS Petroleum Research Fund, <i>"Studies of Charge Transfer Across the Interface between a Small Aqueous Phase (<1femto liter) and a Bulk Organic Phase"</i>	\$28,000	*	
Vasiliev, Aleksey N			
ETSU Research Foundation, <i>"Highly efficient adsorbents for post-combustion CO2 capture"</i>	\$3,690		
<u>Dean, College of Arts and Sciences</u>			
Anderson, Gordon			
National Science Foundation, <i>"Science First!"</i>	\$587,483		
National Science Foundation, <i>"Renovation of Research Facilities in Brown Hall ETSU"</i>	\$499,841	*	
<u>Foreign Languages (now Language and Literature)</u>			
Nelson, Ardis			
TN Board of Regents, <i>"XCELL Mentor Program"</i>	\$39,040		
TN Department of Health, <i>"Interpretation/Translation Services 2010-2011"</i>	\$12,000	*	
TN Department of Education, <i>"Interpretation Services for TEIS"</i>	TBD	*	
<u>Geosciences</u>			
Gao, Yongli			
National Science Foundation, <i>"Collaborative Research: Global Change and the Terrestrial Paleoclimate Record from Eastern North America: 600,000 years BP to Present"</i>	\$48,623		
Tennessee Valley Authority, <i>"Modeling of containment transport on the Beaver Creek Drainage of Boone Reservoir"</i>	\$10,000		
Gregg, Christopher			
National Oceanic and Atmospheric Administration, <i>"Incorporating Social Science into NOAA's Tsunami Program"</i>	\$166,667	*	
National Science Foundation, <i>"Effects of Environmental Cues and Informal and Official Warnings on Behavioral Responses to Tsunamis..."</i>	\$93,648		
Mead, Jim			
National Park Service, U.S. Dept of the Interior, <i>"Ice Age Natural History and Test Excavations in the Western Grand Canyon"</i>	\$32,983	*	

Wallace, Steven		
National Science Foundation, “ <i>Systematic Sampling of the Gray Fossil Site Vertebrates: A Unique Mio-Pliocene Fauna from the Southern Appalachians</i> ”	\$121,301	
<u>History</u>		
Schmitt, Dale		
Heritage Alliance, “ <i>Teaching American History Project (TAH)</i> ”	\$20,000	
<u>Mathematics</u>		
Cintron-Arias, Ariel		
National Science Foundation, “ <i>NSF/CBMS Regional Conference in the Mathematical Sciences--'Mathematical Epidemiology with Applications'-July 18-22, 2011</i> ”	\$38,726	*
Godbole, Anant		
National Science Foundation, “ <i>REU Site: Probability, Combinatorics and Graph Theory</i> ”	\$94,160	
Knisley, Jeff		
National Science Foundation, “ <i>The Northeast Tennessee Robert Noyce Scholarship Program</i> ”	\$194,212	
<u>Philosophy and Humanities</u>		
Kortum, Richard D		
National Endowment for the Humanities, “ <i>Rock Art & Archaeology: Investigating Ritual Landscape in the Mongolian Altai</i> ”	\$30,254	*
<u>Physics and Astronomy</u>		
Giroux, Mark		
National Aeronautics and Space Administration, “ <i>Unravelling the Mysteries of the Leo Ring: An Absorption Line Study of an Unusual Gas Cloud</i> ”	\$9,640	*
Hagelberg, Frank B		
University of Tennessee, “ <i>Tennessee Solar Conversion and Storage</i> ”	\$38,982	*
Henson, Gary		
Vanderbilt University, “ <i>Synoptic Observations of Variable Stars in the Northern and Southern Hemispheres: Visible Light Photometry and Polarimetry</i> ”	\$4,037	*
Ignace, Richard		
National Science Foundation, “ <i>Collaborative Research: RUI Tracing the Spectropolarimetric History of Circumstellar Structures from High-Mass Stars through Supernovae</i> ”	\$121,912	
National Science Foundation, “ <i>Stellar Polarimetry: From Birth to Death</i> ”	\$22,190	*
Eureka Scientific Institute, “ <i>A Study of Wind Clumps and Bow Shock Structures in Hot Star Winds</i> ”	\$10,847	
Razskazovskiy, Yuriy		
University of Rochester, “ <i>Solid State Radiation Chemistry of DNA</i> ”	\$7,170	

Smith, Beverly	National Aeronautics and Space Administration, <i>"The 4.5 micron Excess from Dwarf Galaxies -- ADA program"</i>	\$46,072	*
	Vanderbilt University, <i>"Student Attraction and Retention in Physics and Astronomy (SARPA) Scholarships"</i>	\$18,000	*

Psychology

Cantrell, Peggy	Frontier Health, Inc., <i>"Clinical Affiliation for GA Support"</i>	\$54,000	*
	Cherokee Health Systems, <i>"Clinical Affiliation with Cherokee Health Systems-GA Support"</i>	\$20,000	*
	Friends-in-Need Health Care Center, <i>"Clinical Affiliation with Friends in Need -GA Support"</i>	\$12,000	*
	Mountainview Pediatrics, <i>"Clinical Affiliation Agreement Between ETSU and MountainView Pediatrics"</i>	\$9,500	*

Dixon, Wallace	National Institutes of Health, <i>"International Conference on Infant Studies 2010-2014"</i>	\$1	
-----------------------	--	-----	--

Floyd, Andrea	National Institutes of Health, <i>"A population-based controlled investigation of QOL and health behaviors among Survivor"</i>	\$73,198	
----------------------	--	----------	--

Hirsch, Jameson K.	National Institutes of Health, <i>"ETSU PEAKS: Campus suicide prevention grant (year 2)"</i>	\$98,119	*
---------------------------	--	----------	---

Jones, Jodi	National Institutes of Health, <i>"Rural parents' perceived stigma of mental health services for their children"</i>	\$211,344	*
	Community Health Network, <i>"Psychology Department Telehealth Program"</i>	\$54,076	*

Sellers, Eric W	Duke University, <i>"Towards clinical acceptability: Enhancing performance of the P300-based brain computer interface via improved stimulus selection and signal processing"</i>	\$62,224	
------------------------	--	----------	--

Social Work

Smith, Michael	Middle Tennessee State University, <i>"Title IV-E Project 2010-2011"</i>	\$753,031	*
-----------------------	--	-----------	---

Sociology

Franklin, Jay	Water Resources, LLC, <i>"Phase I Archaeological Reconnaissance Survey of the Proposed Wetland Bank Project-Lick Creek #2"</i>	\$11,568	*
	TN Department of Environment and Conservation, <i>"Archaeological Survey of Pickett State Forest, Upper Cumberland Plateau, TN"</i>	\$9,500	*
	ETSU Research Foundation, <i>"Phase III Archaeological Data Recovery of Low Gap Creek Rockshelter"</i>	\$8,037	*

College of Business and Technology

Bureau of Business and Economic Research

Smith, Jon

U.S. Department of Education, " <i>Sustaining Rural Communities in North America via Entrepreneurship Education (NAREN)</i> "	\$52,332	
Mountain States Health Alliance, " <i>Economic Impact Study Mountain States Health Alliance Hospitals</i> "	\$50,050	*
Mountain States Health Alliance, " <i>Economic Impact Study for the Johnson City Medical Center</i> "	\$10,000	*
Mountain States Health Alliance, " <i>Economic Impact Study for the Franklin Wood Hospital</i> "	\$7,500	*

Dean, College Of Business and Technology

Hyder, Carroll

University of Tennessee Center for Industrial Services, " <i>To Provide Support to the Business & Industrial Assistance Program</i> "	\$80,000	*
---	----------	---

Engineering, Technology, Surveying and Digital Media

Hemphill, William K

TN Office of Aeronautics, " <i>Basic Aerospace Education Workshop 2011</i> "	\$44,000	*
--	----------	---

Johnson, Keith V

TN Board of Regents, " <i>Minority Faculty Recruitment Program - Phase II</i> "	\$50,000	*
---	----------	---

Sims, Joseph Paul

TN Tech University, " <i>Industrial Assessment</i> "	\$25,000	*
--	----------	---

Vaglia, John

TN Department of Education, " <i>Teacher education activities for Technology Engineering Education 2010-2011</i> "	\$4,616	*
--	---------	---

Small Business Development Center

Justice, Robert

Middle Tennessee State University, " <i>TN Small Business Development Center 2011</i> "	\$220,193	*
Holston Business Group, Inc., " <i>HBG Incubator</i> "	\$42,306	

College of Clinical and Rehabilitative Health Sciences

Allied Health Sciences

Scherer, Nancy

Alliance for Business and Training, " <i>CT/MRI Training for Radiographers</i> "	\$47,075	
--	----------	--

Audiology and Speech-Language Pathology (formerly Communicative Disorders)

Chase, Patricia

Watauga Hearing Conservation, Inc., <i>"Support for Audiology GA - Watauga Hearing"</i>	\$3,000	*
Bristol Regional Speech and Hearing Center, <i>"Support for Audiology GA - Bristol Regional Speech and Hearing Center, Inc."</i>	\$3,000	*
Greeneville Ear, Nose and Throat Associates, <i>"Audiology Graduate Assistant Support"</i>	\$3,000	*

Louw, Brenda

U.S. Department of Education, <i>"Consortium for Promoting Cross-Linguistic Understanding of Communication Disabilities in Children"</i>	\$29,052	*
TN Department of Education, <i>"TEIS Birth through Two Years"</i>	TBD	*

Scherer, Nancy

National Institutes of Health, <i>"An Exploratory Model of Early Speech Intervention for Children with Cleft Palate"</i>	\$186,647	
TN Department of Education, <i>"Graduate Training in Speech-Language Pathology for Bachelor-level Speech Language Teachers"</i>	\$104,587	

Physical Therapy

Wassinger, Craig

TN Physical Therapy Association, <i>"Fatigue Induced Adaptation of Scapulohumeral Kinematics"</i>	\$560	*
---	-------	---

College of Education

Curriculum and Instruction

Lewis, Angela

TN Department of Education, <i>"Professional and Resource Development for Family and Consumer Sciences Teachers 2010-2011"</i>	\$2,526	*
--	---------	---

Sobol, Daniel Joseph

Overmountain Victory Trail Association, <i>"Storytelling for Historic Interpretation and Public Outreach on the Over Mountain Victory National Historic Trail"</i>	\$3,000	*
--	---------	---

Human Development and Learning

Chambers, Cynthia

TN Department of Education, <i>"Turning Pages Together"</i>	\$17,993	*
---	----------	---

Langenbrunner, Mary

TN Supreme Court Administrative Office of the Courts, <i>"Parent Education and Mediation Fund 2010-2011"</i>	\$3,300	*
--	---------	---

Marks, Lori

TN Department of Education, <i>"Special Education Institute 2009-2012"</i>	\$310,756	
TN Department of Education, <i>"BASE-TN at ETSU"</i>	\$75,000	

Scarborough, Janna
 American Psychological Foundation, *"Project SCENE (School Counselor Education, Needs, and Experience) for LGBTQ Youth"* \$15,000 *

Stone, John
 Foundation Endowment, The, *"Extending a consumer-friendly consultants network"* \$89,138 *

Kinesiology, Leisure and Sport Science

Ayres, Christopher
 TN Department of Education, *"PANTSS"* \$50,000

Greene, Amy
 Hawkins County, TN Department of Education, *"Fit Kids - Hawkins County"* \$14,000 *
 Mountain States Health Alliance, *"Fit Kids-Niswonger Children's Hospital"* \$12,000 *
 Mountain States Health Alliance, *"MSHA Fit Kids - Carter County"* \$6,000 *
 Mountain States Health Alliance, *"MSHA Fit Kids -- Carter and Unicoi Counties"* \$6,000 *
 Mountain States Health Alliance, *"MSHA Fit Kids -- Unicoi County"* \$6,000 *
 Washington County Department of Education, *"Fit Kids - WCDE"* \$4,000 *
 Mountain States Health Alliance, *"MSHA Fit Kids -- Washington County"* \$2,500 *

Stone, Michael
 Polar Electro, Inc., *"Soccer Study: Validation of the Polar Team 2 System (and software)"* \$8,576 *

Math & Science Excellence

Rhoton, Jack
 TN Department of Education, *"Governor's School for Scientific Models and Data Analysis"* \$119,998 *
 TN Higher Education Commission, *"Reaching for Excellence in Elementary School Science"* \$75,000 *

College of Medicine

Biochemistry and Molecular Biology

Champney, W. Scott
 National Institutes of Health, *"Features of Bacterial Ribosomal Subunit Assembly Intermediates"* \$103,859
 Cempra Pharmaceuticals, *"An investigation of the Fluoroketolide Antibiotic CEM-101 on bacterial ribosome biogenesis"* \$74,502 *

Rusinol, Antonio
 National Institutes of Health, *"Regulation of Prelamin A Levels by Zmpste24 in Quiescence"* \$71,000

Serrano, Moises Alejandr
 National Institutes of Health, *"Role of RPA Hyperphosphorylation in DNA Damage Responses"* \$30,553

Zou, Yue		
National Institutes of Health, " <i>Checkpoint Signaling and Repair of UV Damage to Human DNA</i> "	\$234,941	
University of Rhode Island, " <i>Sequence Effects of Arylamine-DNA Adducts: Repair and Replication</i> "	\$55,880	
Progeria Research Foundation, " <i>Molecular mechanisms of genome instability in HGPS</i> "	\$50,000	*
 <u>Continuing Medical Education</u>		
Sucher, Barbara		
Mountain States Health Alliance, " <i>CME Agreement with MSHA for 2010-2011</i> "	\$58,147	*
 <u>Cultural Affairs, Office of</u>		
Dobbins, Dorothy		
TN Opportunity Programs, Inc., " <i>2010 ETSU Migrant Student Leadership Institute</i> "	\$38,714	*
 <u>Dean, College of Medicine</u>		
Bagnell, Philip		
National Institutes of Health, " <i>Quillen College of Medicine Building 119 Renovation -- ARRA</i> "	\$3,042,503	
Medical Education Assistance Corporation, " <i>To Provide Services of a Managed Care Director</i> "	\$15,600	
Wilgocki, Gregory		
TN Bureau of TennCare, " <i>Graduate Medical Education 2010-2011</i> "	\$8,440,000	*
Medical Education Assistance Corporation, " <i>To Provide Services of Jana Fullbright, Dir Billing Compliance</i> "	\$94,630	
 <u>Family Medicine</u>		
Bailey, Beth		
State of Tennessee, " <i>Tennessee Intervention for Pregnancy Smoking (TIPS)</i> "	\$218,299	*
Florence, Joseph		
Health Resources and Services Administration, " <i>Expanding Primary Care and Community Medicine to Third-Year Medical Students (PreDoc)</i> "	\$233,073	*
Franko, John P.		
TN Department of Health, " <i>Primary Care Physician Services</i> "	\$48,800	*
Lang, Forrest		
National Institutes of Health, " <i>Instructional Modules to Improve Cancer Communication</i> "	\$315,976	
Tudiver, Fraser		
Health Resources and Services Administration, " <i>Improving Quality of Care Through an Appalachian Practice Based Research Network (AAU)</i> "	\$250,000	*
Health Resources and Services Administration, " <i>Residency Training in Primary Care</i> "	\$173,628	

Internal Medicine

Krishnaswamy, Guha

CSL Behring, "Malignancies complicating humoral immune deficiencies"	\$6,350	*
CSL Behring, "Type III and hormone-sensitive angioedemas"	\$6,350	*
CSL Behring, "Neurological complications associated with humoral immune deficiency"	\$6,350	*
CSL Behring, "Severe, steroid dependent or refractory autoimmune uricaria"	\$6,350	*

LeSage, Gene D

Medical Education Assistance Corporation, "To Provide -- Services of Physicians to unattached patients at HVHMC"	\$198,756	*
Medical Education Assistance Corporation, "To Provide -- Clerical Support Services"	\$46,800	*
Medical Education Assistance Corporation, "To Provide -- Services of part-time ID Nurse"	\$18,200	*
Medical Education Assistance Corporation, "To Provide -- Services of Hospitalist Physicians"	\$13,000	*

Mehta, Jayantilal

TN Department of Health, "Physician Services for Tuberculosis Control"	\$63,800	*
--	----------	---

Moorman, Jonathan

GlaxoSmithKline, "GSK Study 111679 (TH HIV-008)"	\$12,800	*
--	----------	---

Sarubbi, Felix

Wellmont Health Systems, "To Provide Support of Two Infectious Diseases Physicians"	\$221,000	
TN Department of Health, "HIV/AIDS Center of Excellence: Care Management Services 2010-2011"	\$198,700	*
TN Department of Health, "HIV/AIDS Center of Excellence: Care Management Services 2011-2012"	\$198,700	*
East Tennessee Human Resources Agency, "Infectious Diseases Nurse for Clients with HIV/AIDS 2011-2012"	\$29,000	*

Stuart, Charles

TN Department of Health, "Primary prevention of diabetes at the Johnson City Downtown Clinic"	\$224,000	*
National Institutes of Health, "Mechanisms by which exercise training ameliorates the metabolic syndrome-R15"	\$193,587	*

Yin, Deling

National Institutes of Health, "Role of Opioids Signaling in Immune Suppression-R15"	\$143,000	*
--	-----------	---

Medical Library (Learning Resources)

Cook, Nakia J

National Network of Libraries of Medicine, "Exhibit Award RAM August 14-15, 2010-Erwin"	\$2,000	*
National Network of Libraries of Medicine, "TN Public Health Assoc. Education Conference Exhibit - Sept 15 - 17, 2010"	\$1,685	*

Evans, Elaine

National Network of Libraries of Medicine, "Color My World Healthy"	\$5,900	*
---	---------	---

Wallace, Richard

National Network of Libraries of Medicine, "Express Mobile Technology Pilot Technology Award"	\$6,000	*
National Network of Libraries of Medicine, "Express Library Technology Improvement Award"	\$3,500	*
National Network of Libraries of Medicine, "Exhibit Award RAM October 8-10, 2010-Bristol"	\$2,000	*
National Network of Libraries of Medicine, "Rural Health Association of Tennessee 2010 Meeting/Exhibit--Nov 17-19,2010"	\$1,839	*

Microbiology**Wyrick, Priscilla**

Medical Education Assistance Corporation, "To Provide -- P/T Services of Yu Du, Research Tech"	\$6,552	*
--	---------	---

Pathology**Cline-Parhamovi, Karen**

TN Department of Health, "To Provide - Services for Acting State Chief Medical Examiner"	\$53,496	*
TN Department of Health, "To Provide - Services for Deputy State Medical Examiner for East Tennessee"	\$19,794	*

Schweitzer, John

Upper East Tennessee Counties, "Forensic Services for Upper East TN Counties 2010-2011"	\$426,882	*
State of Tennessee, "To Provide -- State Legislature Forensic Contract"	\$100,000	*
State of Tennessee, "To Provide -- Forensic Services"	\$84,900	*
Medical Education Assistance Corporation, "To Provide -- Services of Denise Schmid, Research Specialist/Cytotechnologist"	\$20,956	*
Various Sponsors, "To Provide -- Autopsy Services"	\$10,350	*
Medical Education Assistance Corporation, "To Provide -- Services of Histology coordinator"	\$8,363	*
Veterans Affairs Medical Center, "To Provide -- Autopsy Services"	\$1,000	*

Pediatrics**Kalwinsky, David**

Medical Education Assistance Corporation, "To Provide -- Services of Dr. Rajani Anand, Cardiologist"	\$136,282	*
Medical Education Assistance Corporation, "To Provide -- Services of Dr. Kathryn Klopfenstein, Oncologist"	\$120,510	*
Medical Education Assistance Corporation, "To Provide -- Services of Dr. Karen Schetzina, Generalist"	\$105,171	*
Medical Education Assistance Corporation, "To Provide -- Services of Dr. Bedford Bonta, Neonatologist"	\$97,640	*
Medical Education Assistance Corporation, "To Provide -- Services of Dr. Darshan Shah, Neonatologist"	\$78,000	*
Medical Education Assistance Corporation, "To Provide -- Services of Glenda Fulbright, RN"	\$65,240	*
Medical Education Assistance Corporation, "To Provide -- Services of Dr. Todd Aiken, Hospitalist"	\$59,800	*

Medical Education Assistance Corporation, <i>"To Provide -- Services of Dr. Gayatri Jaishankar, Generalist"</i>	\$58,500	*
Medical Education Assistance Corporation, <i>"To Provide -- Services of Dr. Otto Teixeira, Cardiologist"</i>	\$52,010	*
Medical Education Assistance Corporation, <i>"To Provide -- Services of Dr. Rebecca Powers, Generalist"</i>	\$50,012	*
Medical Education Assistance Corporation, <i>"To Provide - Dr. Marcela Popescu, Pediatric Hematology/Oncology"</i>	\$45,895	
Medical Education Assistance Corporation, <i>"To Provide -- Services of Dr. Debra Mills, Generalist"</i>	\$45,380	*
Medical Education Assistance Corporation, <i>"To Provide -- Services of Dr. Dawn Tuell, Generalist"</i>	\$43,649	*
TN Department of Health, <i>"State Hemophilia Program"</i>	\$20,500	
Medical Education Assistance Corporation, <i>"To Provide -- Services of Dr. Melinda Lucas, Hospitalist"</i>	\$13,915	*
Rary, Jack		
TN Department of Health, <i>"Genetics Screening, Testing, Counseling, Education and Follow-up 2010-2011"</i>	\$249,300	*
Schetzina, Karen		
Hawkins County, TN Department of Education, <i>"Striving for (HC)2: Healthier Children in Hawkins County"</i>	\$7,693	
American Academy of Pediatrics, <i>"Educating Pediatric Providers to Increase Breastfeeding in Appalachia"</i>	\$1,000	*
<u>Pharmacology</u>		
Agrawal, Alok		
National Institutes of Health, <i>"Structure-function Relationships of C-reactive Protein"</i>	\$321,750	
Ardell, Jeffrey		
National Institutes of Health, <i>"Myocardial Ischemia Remodels the Cardiac Nervous System"</i>	\$357,500	
American Heart Association - Greater Southeast Affiliate, <i>"Health Sciences Fellowship in Neurocardiology"</i>	\$13,500	*
Hoover, Donald		
American Heart Association - Greater Southeast Affiliate, <i>"Role of Neurturin in the Development of Cardiac Cholinergic Neurons"</i>	\$82,500	*
University of Colorado, <i>"Pharmacokinetic Evaluation of Drugs"</i>	\$1,974	*
Kostrzewa, Richard		
Merz Pharmaceuticals, <i>"Effects of New Drugs on Hyperlocomotor Activity"</i>	\$21,101	*
Ordway, Gregory		
National Institutes of Health, <i>"Neuroadrenergic System in Depression"</i>	\$318,533	
Autism Speaks, <i>"Gila Pathology in Autism"</i>	\$59,677	*
Medical Education Assistance Corporation, <i>"To Provide -- Services of Toxicology Laboratory Supervisor"</i>	\$27,000	*
Southerland, E. Marie		
Ithaca College, <i>"Remodeling of the guinea pig intrinsic cardiac plexus with chronic heart disease"</i>	\$50,000	

Wright, Gary		
National Institutes of Health, <i>"Role of Prolyl Hydroxylase Oxygen-Sensor in Cardioprotection"</i>	\$643,500	
National Institutes of Health, <i>"Role of prolyl hydroxylase oxygen-sensor in cardioprotection ADMINISTRATIVE SUPPLEMENT"</i>	\$102,960	
Zhu, Meng-Yang		
National Institutes of Health, <i>"Neurobiological Correlates of Stress and Nonrepinephrine Transporter"</i>	\$283,635	
<u>Physiology</u>		
Singh, Krishna		
American Heart Association - Greater Southeast Affiliate, <i>"Relationship between cardiac ischemic nociceptor signaling, electoneuromodulation and central vanilloid receptors"</i>	\$82,500	
Veterans Affairs Medical Center, <i>"To Provide-Cerrone Foster"</i>	\$18,336	*
<u>Psychiatry and Behavioral Sciences</u>		
Miller, Merry		
Medical Education Assistance Corporation, <i>"To Provide Services of Philip L Steffey"</i>	\$19,700	
Moore, Norman		
Elan Pharmaceuticals, <i>"Clinical Study Agreement"</i>	\$150,844	
Soterion Health Care Group, LLC, <i>"The Soterion Neuropsychiatric and Molecular Imaging Research Fellowship"</i>	\$81,929	*
Moser, Michele		
TN Bureau of TennCare, <i>"Tenn Care Center of Excellence for Children in State Custody"</i>	\$454,788	*
<u>Quillen Chair of Geriatrics and Gerontology</u>		
Hamdy, Ronald		
Southern Medical Association, <i>"To Provide Services -- SMJ office"</i>	\$30,494	*
<u>Surgery</u>		
Browder, Isaac William		
Medical Education Assistance Corporation, <i>"To Provide -- Services of Surgery Department Staff"</i>	\$330,615	*
Mountain States Health Alliance, <i>"To Provide Cardiovascular Services"</i>	\$12,000	
Delucia, Anthony		
Georgia Institute of Technology, <i>"Impact of climate-responsive design on heat-related morbidity and mortality in large US cities:2010-2050"</i>	\$19,187	
Greene, Rachel R		
National Institutes of Health, <i>"NRSA for Individual Postdoctoral Fellows (F32)"</i>	\$53,354	
Kao, Race		
National Institutes of Health, <i>"Innate Immunity in Trauma Hemorrhage-R15"</i>	\$211,029	

American Heart Association - Greater Southeast Affiliate, <i>"Innate Immunity in Trauma-Hemorrhage"</i>	\$82,500	
Li, Chuanfu National Institutes of Health, <i>"Roll of Toll-Like Receptor Signaling in Cardiac Ischemia"</i>	\$357,500	
Li, Chuanfu / Williams, David National Institutes of Health, <i>"Innate Immunity and Cardiovascular Function in Sepsis"</i>	\$297,297	
Ozment-Skelton, Tammy American Heart Association - National, <i>"The class A scavenger receptor as a mediator of septic shock"</i>	\$77,000	*

College of Nursing

Center for Nursing Research

Edwards, Joellen Women's Wellness and Maternity Center, <i>"Getting East TN Women Involved in Their Health with Interactive Teaching (Get With It)"</i>	\$59,243	*
---	----------	---

Dean, College of Nursing

Grover, Susan TN Department of Health, <i>"Physical Assessment Training"</i>	\$47,500	
Nehring, Wendy Health Resources and Services Administration, <i>"Facility Investment Program"</i>	\$3,447,152	*
Wellmont Health Systems, <i>"Holston Valley Medical Center-BSN Expansion through Wellmont Health Systems"</i>	\$85,370	
Wellmont Health Systems, <i>"Bristol Regional Medical Center-BSN Expansion through Wellmont Health Systems"</i>	\$85,370	

Nursing Practice and Research

Brodrick, Rhonda Robert Wood Johnson Foundation, <i>"Pre-Entry Immersion Program"</i>	\$5,200	*
Dugger, Kermit TN Department of Health, <i>"Safety Net - Primary Care Services--Mountain City Extended Hours Health Center"</i>	\$16,200	*
Hayes, Patricia Health Resources and Services Administration, <i>"Primary care in public housing: Targeting health disparities in Appalachia"</i>	\$294,468	*
Holbrook, Helene American Academy of Nurse Practitioners, <i>"ETSU Diabetes Conversation Map Sessions at Johnson City Downtown Clinic"</i>	\$10,000	*

Loury, Sharon		
TN Opportunity Programs, Inc., “Summer Migrant Education Program 2010”	\$43,199	*
Wake Forest University, “Health Needs Assessment of the Hispanic Population in East Tennessee”	\$5,000	*
McConnell, Peggy		
University of Kentucky Research Foundation, “OVAR/GEC Inter-professional Healthcare Workforce Training for Aging”	\$90,000	*
Melke, Richard		
Health Resources and Services Administration, “FOCUS: Family Nurse Practitioners Optimizing Care for the Underserved -- CHC Cluster”	\$1,219,255	*
Nehring, Wendy		
Robert Wood Johnson Foundation, “Expanding capacity for accelerated BSN enrollment in Appalachia”	\$50,000	*
Rayman, Kathleen		
Health Resources and Services Administration, “Improving Accessibility of Doctoral Education in Nursing”	\$280,936	*
Health Resources and Services Administration, “Advanced Nursing Education: Expanding Access to Primary Care Nurse Practitioners in Appalachia”	\$159,840	*
Health Resources and Services Administration, “Advanced Education Nursing Traineeship 2010-2011”	\$57,658	*
Michal Child Development Center, “NP Services for the Michal Child Development Center”	\$44,531	*
Health Resources and Services Administration, “Nurse Faculty Loan Program--ARRA”	\$43,720	*
Health Resources and Services Administration, “Nurse Faculty Loan Program”	\$29,824	*
Frontier Health, Inc., “Frontier Psychiatric Nurse Practitioner Services”	\$21,900	*
Rice, Judith		
TN Department of Mental Health, “PATH Grant 2010-2011”	\$137,244	*
Frontier Health, Inc., “CON-Johnson City Downtown Clinic and Frontier Health”	\$15,000	*
Vanhook, Patricia		
Health Resources and Services Administration, “Access for All: Meeting the Community Demand for Primary Care”	\$500,411	*
TN Department of Health, “Healthcare Safety Net -- JCDC 2010-2011”	\$127,286	*
City of Johnson City, TN, “Special Appropriations--JCDC”	\$37,000	*
Wake Forest University, “Request for funding from Washington County Government”	\$15,000	*
Health Resources and Services Administration, “ETSU CON Community Health Center-2010-2011”	\$13,526	
City of Johnson City, TN, “Emergency Shelter Grant 2010-2011”	\$9,124	*
Walls, Jennie		
Washington County Department of Education, “Services for Washington County Schools-Board of Education”	\$99,533	*
Weierbach, Florence		
American Nurses Foundation, “Determinants of Health for Rural Caregivers”	\$3,500	*

College of Public Health

Community Health

Hillhouse, Joel

National Institutes of Health, *"An Appearance-Based Intervention to Reduce Teen Skin Cancer Risk-R01"* \$912,431 *

Slawson, Deborah L

National Institutes of Health, *"College Students as Facilitators to Reduce Adolescent Obesity Disparity in Southern Appalachia-R01"* \$333,687 *

Stoots, James Michael

National Network of Libraries of Medicine, *"Medline Plus Orientation and Instruction"* \$40,000 *

Dean, College of Public Health

Pack, Robert P

Health Resources and Services Administration, *"Tennessee Long-Distance Internet Facilitated Educational Program for Applied Training in Health (LIFEPAH)"* \$650,000 *

Wykoff, Randolph

National Networks of Public Health Institutes, *"2011 Emerging Institute of Mini-Grant Project"* \$10,000 *

Pfizer Pharmaceuticals, *"Pulmonary Disease Visiting Professorship Award"* \$7,500 *

Environmental Health

Scheuerman, Phillip

Tennessee Valley Authority, *"Water Quality Monitoring: Continued services on pollution identification for area creeks/tributaries"* \$15,000 *

Health Sciences

Lampson, Bert

University of Tennessee, *"Development of a replicative plasmid system to enable bioengineering Thermoxynochococcus elongatus for applied photosynthesis"* \$29,200 *

Health Services Administration

Khoury, Amal Jamil

Mountain States Health Alliance, *"Southern Appalachia Tele-Homecare Program"* \$55,939

* denotes new awards

*The Office of Research and Sponsored Programs Administration
East Tennessee State University*

405 Ross Hall ☞ Box 70565

Johnson City, Tennessee 37614

Office: (423) 439-6052 ☞ Fax: (423) 439-6050

e-mail: research@etsu.edu ☞ website: www.etsu.edu/research/orspa.htm