

Letter from the Deans



MENTOR: “A wise and trusted teacher or counselor”

Do you have a mentor? Have you developed a close relationship with a “wise and trusted teacher?” If not, seek one out.

The word *mentor* comes from Greek mythology: Mentor was an elderly friend and trusted counselor of Odysseus. It was Mentor’s task to watch over Odysseus’ son Telemachus and his home while Telemachus was fighting in the Trojan War. In the *Odyssey*, the goddess Athena disguises herself as Mentor, and in his likeness she guides Telemachus. In book iii, Mentor (Athena) reassures a doubting, insecure Telemachus by saying,

“Part of what you will need your own mind will supply, and heaven will give you the rest.”

It is this kind of nurturing wisdom that the word has come to connote.

Students are frequently too hurried to develop a close relationship with a teacher or advisor. Fearing that professors have limited time, students often don’t seek them out for answers to the most fundamental questions about their classes and programs, let alone the larger questions about careers and life. But mentoring is an integral part of teaching, especially in graduate education; professors are expected to devote individual time and care to graduate advising and to nurturing confidence in their students.



Whether you are in the first year of your graduate program or nearing its completion, find a mentor, a trusted advisor, who will be invested in your professional and personal growth throughout life. Long after you complete your degree, your mentor will be there for you—writing letters of recommendation, urging you to trust your innate strengths, encouraging you to become your best self.

Sincerely,

Wesley Brown, Ph.D. Roberta Herrin, Ph.D.
Vice Provost for Academic Affairs Associate Dean
Dean of the Graduate School & Dean of Special Programs

Inside this issue:

Letters from Officers	2 - 3
Spotlight	4
Travel Award Recipients	5
Upcoming Events	6
Application for Membership	7
Graduate Student Executive Council	9
Meet the Graduate School Staff	10

The Graduate
GPSA & The School of Graduate
Studies
PO Box 70720
Johnson City, TN
37614-1710
Ph. (423) 439-4221
Fax (423) 439-5624



Dear GPSA Members and Prospective Members,

I hope the fall 2003 semester is going well for each of you. We are very excited about the interest in GPSA and hope to have a great turnout at each of our future events. Please check our web site regularly for updates on events and meetings.

What exactly is GPSA? GPSA is the Graduate and Professional Student Association. We're active members of the National Graduate and Professional Student Association. It is an organization that provides funding for travel for graduate students to conferences pertinent to their field. We also have the GPSA Appreciation Week each year to recognize graduate students. We are the only university-wide organization dedicated solely to helping graduate students here at ETSU.

How do I join? To join GPSA, simply fill out an application at one of our meetings, or download it from the web site and mail it in. It doesn't cost anything to join, but it makes you eligible to apply for travel funds. We ask that you each

become active by attending the meetings and activities associated with GPSA week.

Look for our updated web site soon, as well as more information on GPSA week. Check out our web site at: www.etsu.edu/gradstud/gpsa.html. If you have questions, feel free to email us at gradstud@etsu.edu.

Best wishes,
Kimberly Thompson
President, Graduate and Professional Student Association



From the Vice President

Greetings! I'm the Vice President for the GPSA. I earned a B.S. in Biochemistry, Cellular, and Molecular Biology in 2002 from the University of Tennessee. I am an Emergency Medical Technician licensed nationally as well as in intravenous therapy in Tennessee. I have also worked as a phlebotomist for MEDIC Regional Blood Center. I am currently working on a M.P.H. in Public Health Administration and Health Care Management. I look forward to meeting all of you and building a strong GPSA. I would like GPSA to obtain the goals of establishing an executive council, getting

at least 10 percent of the graduate students involved, and obtaining an increase in funding for travel. GPSA is a valuable asset to graduate students and the university. We're trying hard to be an organization that works for graduate students.

Heather M. Barrow
Vice President GPSA



From the Secretary

Hello fellow grad students! How are you all doing? Do you feel the kitchen fires? Is it burning hot? Like many of you, I know it is and know that it will only burn hotter before December rolls in. Despite this heat, I do feel a cool breeze in knowing that GPSA is here to support us all during the semester. GPSA is here to help you find success on campus and can help us all build a collective voice at ETSU. However, I am concerned about the number of you who are not aware of the opportunities that can be gained through participating with this organization. Too often we allow our busy lives to take

precedence over the small things we can do to create new opportunities that will complement our education. Don't let this happen to you! Please, invite a friend to the next GPSA meeting and explore these opportunities. Please, help get the word out about the benefits of participating with GPSA, and help build that voice!

Doug Ritchie
Secretary

Greetings from your GPSA Advisor

My name is Linda Wyatt. I am the Administrative Assistant to the Dean of Graduate Studies, Dr. Wesley Brown. I am also your GPSA advisor and am delighted to see such an active membership this year. The first meeting was very successful with the largest number of graduate students in attendance. The officers and I have some exciting events planned for the Graduate and Professional Student Association this semester, and I hope you will give us as much time as you can spare in your busy schedule.

I am proud to serve as your advisor and am willing to assist you in whatever needs you may have as a graduate student. I want to make your time and educational experience at ETSU the best it can be. The major focus of my position is to advise the organization on what and how we should be functioning as a group. I will be assisting the officers in planning several community projects this semester that will not only increase our visibility on campus but support the community as well as ETSU. Please plan on being an active participant this semester.

"I am proud to serve as your advisor and am willing to assist you in whatever needs you may have as a graduate student."

Another important aspect of GPSA is travel allocations for students who are presenting or co-presenting at major conferences, conventions, or workshops. All you have to do is go to our web site http://www.etsu.edu/gradstud/gpsa_constitution.htm and follow the instructions for completing travel requests for GPSA funding. The major item you need to remember is that if you have a large group of students planning to attend a major conference you must go through 606 funding. GPSA funding is limited to individual travel. Also, please remember to have the Chair of your major department sign the travel request form before it comes to my office.

Good luck this semester and please stop by and introduce yourself when you get a chance. I would love to meet you.

Linda Wyatt

From the Treasurer

Hello fellow grad students! This is Tina Davis, the treasurer for GPSA. I am also involved in a lot of "behind the scenes" planning and organization for GPSA as this is part of my TS position. I am a Clemson University graduate (GO TIGERS!) and am getting my master's in Speech-Language Pathology. I am very excited about our officers for this year! I feel that we are very compatible working together and will be effective in helping GPSA reach all our goals and expectations! If you have any ideas for suggestions or want to find a way to get involved, PLEASE email me at: lwyatt@imail.etsu.edu



and I can help you get plugged in! I hope you are as excited as all the GPSA officers about all the possibilities this year has to offer! Be ready to experience all that GPSA has in store for you! Best of

luck finishing out the rest of the semester and I look forward to seeing you in the spring!

Sincerely,
Tina Davis

Graduate Studies/GPSA Web Tech

Hello, I am a graduate of the Design Graphics Program from ETSU with a B.S. in Technology. I am also currently working on my master's in Digital Media. I originally became involved with the GPSA through a TS position. From experiences there I have learned that the GPSA is an admirable organization in its goal to help improve the Graduate School experience.

If you have technical questions about anything on the web site, I am the man to see.

We are considering new ideas for our GPSA logo design. We

would like to invite any suggestions or designs for a new logo to be sent to my e-mail address: cutlass_olds_442@hotmail.com

Thanks, I look forward to hearing from you and receiving your input. All ideas and designs considered or used will be giving proper recognition.

Steven Jarrod Rife
Web Tech



Spotlight on MPT Student Melissa Ogle

submitted by Dr. Susan Epps, Department of Physical Therapy

Second Lieutenant Melissa Ogle, that is. Melissa was the sole cadet commissioned in December 2002 at a ceremony hosted by the ETSU United States Army Reserve Officers' Training Corps. With family, friends, and cadre in attendance, Melissa's mother and boyfriend pinned the 2nd Lieutenant's bars on her uniform, capping a stellar record as an undergraduate student and ROTC cadet.

Near the end of her undergraduate career at ETSU, Melissa requested an educational delay from the U.S. Army so she could attend graduate school in physical therapy. Her delay was approved and she entered the physical therapy program at ETSU with the fifth class of MPT students in January 2003.

Melissa is an exceptional student. She maintained a strong academic record in the Exercise Science concentration of the Physical Education department while juggling her responsibilities as an ROTC cadet. She pushed herself mentally as well as physically all year round by taking a heavier than average course load each semester, serving as a Resident Advisor for two years, volunteering in the community, and completing intense military training, including the United States Army Infantry School Airborne course at Ft. Benning, GA., and the National Officer's Advanced Leadership Course at Ft. Lewis, Wash. Melissa is one of a small number of female cadets from ETSU ever selected for the Airborne course.

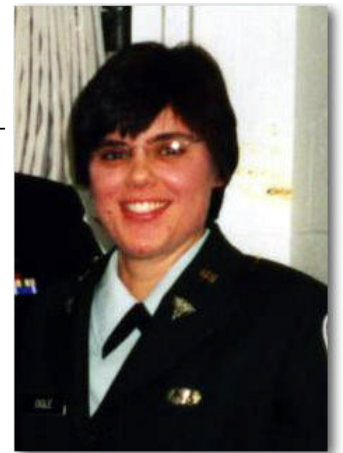
Her list of awards is lengthy but is highlighted by the Physical Proficiency Award (4 years), Superior Cadet Award (3 years), Military Order of the World Wars Award (2 years), the Commander's Awards for Excellence in Physical Training and Hand Grenade Assault courses, the American Legion Commander's Award for Excellence, and the Superior Academic Achievement Award (4 years).

"Melissa requested an educational delay from the U.S. Army so she could attend graduate school in physical therapy."

Melissa served as the Buccaneer Battalion Executive Officer and the Buccaneer Cadet Battalion Commander during her time in the ETSU ROTC program. She presented programs on Cardiovascular Disease for the ETSU Well on the Way (WOW) program, and Aspects of Exercise Physiology and Exercise Prescription for the ETSU Center for Family Medicine.

Although her academic coursework in the physical therapy program leave her little room for outside activities, she bemoans the fact that she isn't eligible to participate in military training while on an educational delay. She continues her physical training at the Center for Physical Activity on campus, arriving as the doors open. She has also been asked to serve as the student member of the new Physical Therapy Select Program Admissions Committee in her department.

According to Dr. Susan Epps, Advisor and Selective Admissions Coordinator for the PT program, "Melissa is the well-rounded student we look for in selecting students for the PT program. I have worked with her since she came to ETSU as a freshman as her advisor and teacher and she has never failed to amaze me with her drive, her intelligence, and her commitment. When she told me she was going to Airborne school, I made her promise she would come see me as soon as she got back so I'd know she was okay. My stomach twisted into knots as she explained how one gets through 'jump school' and in response to my question about what makes a jump successful, she just shrugged and said, 'It's one you can walk away from after hitting the ground.' As if it were no big deal. I know the Army is lucky to have an officer of her caliber. I'm just glad they let us have her for a little while longer."



2002-2003 Travel Award Recipients

Any graduate or professional student at East Tennessee State University who has a completed membership form on file and is actively involved in Graduate and Professional Student Association (GPSA) can apply for use of GPSA travel funds. A travel form can be obtained from the Graduate Office or online at: <http://www.etsu.edu/comptrol/frm.htm#Travel>. GPSA only awards money for individual travel. Group travel requests will not be considered and you must request 606 funding from the Student Government Association (SGA). A graduate student may not receive funding from both agencies. If granted 606 funding, you are ineligible for GPSA travel grants. Be sure to have the Chair of the department sign your travel request form before it comes to the Graduate School for processing. Because the funds are limited, the following priorities will be followed in the allocations:

1. First priority will be given to applicants who are requesting funds for presenting research/scholarly presentation in which the applicant is sole or co-author.
2. Second priority will be given to applicants who are requesting funds to attend a conference or professional development workshop that can be shown to be linked to their program of graduate study at ETSU.
3. Other proposals will be considered if applicants can demonstrate that the proposed activity will enhance their graduate education, program of study and/or scholarship.

Xuwan Liu (Biomed) presented a poster at the American Heart Association Sessions from November 16-20, 2002, in Chicago, IL.

Sheila Smith (ELPA Doctorate Program) attended the 12th annual Celebration of Children's Literature Conference in Abingdon, VA, on October 4, 2003.

Venkata Phani Kiran Achanta (CSCM) attended The 17th Large Installation Systems Administration Conference from October 26-31, 2003, in San Deigo, CA.

Kimberly Thompson (Biomed) will be presenting research entitled "Early Developmental Cognitive Deficits in a Rodent Model of Schizophrenia" at the 2003 Annual Meeting for the Society for Neuroscience in New Orleans, LA, from November 10-12, 2003.

Joseph Hines II (Public Health) attended the American Public Health Association's 131st Annual Meeting & Exposition in San Francisco, CA, from November 15-19, 2003.

Dhanalakshmi Thirumalai (Public Health) will be attending the American Public Health Association's 131st Annual Meeting & Exposition in San Francisco, CA, from November 15-19, 2003.

Tomeeka Rounds (Public Health) will be attending the American Public Health Association's annual meeting and will be collecting information for a consulting course. The meeting will be in San Francisco, CA, from November 15-19, 2003.

Willette Crawford (Public Health) will be presenting a poster entitled "Organ Donation and Transplantation Awareness in African Americans Living in Rural Alabama" at the 131st Annual Meeting of the American Public Health Association. The meeting will be in San Francisco, CA, from November 15-19, 2003.

Letter of Gratitude

Dear Ms. Wyatt,

I would like to thank the GPSA for their financial assistance to support my attendance at the Society of Forensic Toxicologist and Southeast Regional Society of Toxicology annual meeting October 18-26, 2003. I received the first place award for the poster *The Distribution of Sevoflurane Induced Death* and also presented *The Analysis of Sevoflurane by Headspace Gas Chromatography*. I look forward to presenting our work at the future student research forum in 2004.

Sincerely,

Dave Burrows



Fall Schedule of Events

- **November-December** — We will be collecting donations for Second Harvest Food Bank, the local animal shelter, and blanket & coat drive for local shelters until Christmas time.
- **Christmas Holiday**– December 25-January 1 (Office closed)

Spring Schedule of Events

- **January 2004** — Graduate Student Funding Opportunities Workshop.
- **February 2004** — GPSA Spring Meeting.
- **April 2004** — ETSU Student Research Forum.
- **April 2004** — GPSA Appreciation Week.

Sun	Mon	Tue	Wed	Thu	Fri	Sat
	1 Misc. Charity Drives	2 Misc. Charity Drives	3 Misc. Charity Drives	4 Misc. Charity Drives	5 Misc. Charity Drives	6 Misc. Charity Drives
7 Misc. Charity Drives	8 Misc. Charity Drives	9 Misc. Charity Drives	10 Misc. Charity Drives	11 Misc. Charity Drives	12 Misc. Charity Drives	13
14	15	16	17	18	19	20
21	22	23	24	25	26	27
28	29	30	31			

GPSA Appreciation Week

GPSA Appreciation Week is held each year during the Spring Semester. The Governor proclaims one week in April as GPSA week in the state of Tennessee. GPSA Appreciation Week is a time for recognizing contributions of graduate and professional students to the institution in their major fields of research. All students who have received travel funds from GPSA will give a 5-to 10-minute presentation about their experience presenting research in their field of study or attending conferences related to their field. The graduate office will host an open house with cake and beverages! Keep on the lookout for the upcoming event!



**Graduate and Professional
Student Association
(GPSA)
ETSU BOX 70720
Johnson City, TN 37614-1710
Phone: (423) 439-4221 Fax: (423) 439-5624**

Application for Membership

Name: _____

Local Address: _____

City: _____ State: _____ Zip: _____

Phone (H): _____

Phone (W): _____

E-mail: _____

Department: _____

Program of Study: _____

The Graduate and Professional Student Association (GPSA) of East Tennessee State University is a student-managed organization whose membership is open to all currently enrolled post-baccalaureate degree-seeking students. The primary goal of the GPSA is to provide support and informational services which will encourage all graduate/professional students to: 1) become involved in institutional governance and development, 2) participate in student-sponsored activities, and 3) maximize their potential as students, educators, and researchers. GPSA is a member of the National Association of Graduate and Professional Students (NAGPS); its primary function is to improve the quality of both graduate/professional education and the graduate/professional student experience at ETSU.



Place
postage
here

PLEASE RETURN FORM TO:

GPSA– School of Graduate Studies
Attn: Tina Davis
PO Box 70720
Johnson City, TN 37614-1710

-----*-(PLEASE FOLD HERE FOR MAILING)-*-----

Graduate Student Executive Council

Since the beginning of the fall semester, the Graduate and Professional Student Association (GPSA) has been underway in making a lot of changes to improve GPSA and make it a stronger organization. There are several goals that we want to be able to obtain throughout the academic year. One of these goals is to establish an executive council for GPSA. In order to be a more effective organization, there needs to be an established executive council comprised of representatives from each college at ETSU. Our hope is to have a representation of at least 10 percent of the graduate students (200 students) in order to be able to get increased funding for student travel. We want GPSA to be an asset for graduate students. We have already received several names of representatives selected by their college or program. We hope that every program or college can be represented. Anyone interested in being a representative for his or her program should contact GPSA.



Kim Webb Clinical Nutrition

Laura Jones Counseling

Robbie Southern Biomedical Sciences

Mike Tran Biomedical Sciences

Karthik Anumalesetty Business and Technology

Sheila Smith Education

Willette Crawford Public & Allied Health

Leslie Moore Public & Allied Health

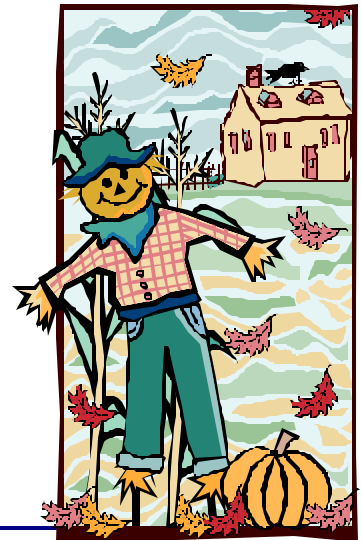
Sarah Matney Business and Technology

Alain Talla Arts and Sciences

Michael Childress Arts and Sciences

Jennifer Chalkley Arts and Sciences

GPSA Officer List 2003-2004



President: Kimberly Norris-Thompson

thompson@mail.etsu.edu

Vice President: Heather Barrow

heathermbarrow@yahoo.com

Secretary: Douglas Ritchie

ritchieadoug@hotmail.com

Treasurer: Tina Davis

rina5090@aol.com

Web Tech: Steven Jarrod Rife

cutlass_olds_442@hotmail.com

Advisor: Linda Wyatt

wyattlg@mail.etsu.edu

Meet the Staff: School of Graduate Studies

Wesley C. Brown, Ph.D.

Vice Provost for Academic Affairs
Dean of the Graduate School &
Special Programs
Phone: 439-6146
Email: wesbrown@mail.etsu.edu
Directs all programs and staff of the
School of Graduate Studies. GPSA
Faculty Advisor.

Roberta Herrin, Ph.D.

Associate Dean
Phone: 439-6147
Email: herrin@mail.etsu.edu
Assists the Dean in running the
School of Graduate Studies.
Supervises the four program
liaisons. Oversees all admissions
and records functions. Validates
all international transcripts and
oversees the in-state residency
application process. Handles late
drop/add requests.

Linda Wyatt

Administrative Assistant
Phone: 439-6146
Email: wyattlg@mail.etsu.edu
Assists the Dean in administration
of the School of Graduate Studies.
Processes graduate assistantship and
tuition scholarship contracts. Assists
with Graduate Council, graduate

coordinators, and graduate faculty.
Assists with recruiting and orienta-
tion. GPSA Staff Advisor.

Judy Lawson

Program Liaison
Phone: 439-6590
Email: lawsonj@mail.etsu.edu
Responsible for: Educational
Leadership, Policy Analysis, and
Master of Social Work Programs.

Robin O'Dell

Program Liaison
Phone: 439-6148
Email: odell@mail.etsu.edu
Responsible for: Non-degree stu-
dents, Counseling, Early Childhood
Education, Elementary and Sec-
ondary Education, MAT, Physical
Education, Reading, Special
Education, and Educational Media
and Educational Technology.

Mary Duncan

Program Liaison
Phone: 439-4302
Email: duncanm@mail.etsu.edu
Responsible for: Medicine,
Nursing, and Public and Allied
Health.

Gail Powers

Program Liaison
Phone: 439-7043
Email: powersg@mail.etsu.edu
Responsible for: Arts and Sciences,
Technology and Geomatics, and
Continuing Studies.

Sonja Jackson

Admissions Counselor and
Recruiter
Phone: 439-6149
Email: jacksosr@mail.etsu.edu
Develops and maintains a recruit-
ment strategy, including the
recruitment of minority students.
Travels to graduate and professional
school fairs and seminars. Responsi-
ble for databases and data reports
reflecting inquiries, applications,
admissions, and enrollment for
graduate programs.

Queen Brown

Secretary/Receptionist
Phone: 439-4221
Email: bownq@mail.etsu.edu
Handles all areas of the front desk
operation. Greets and routes all
visitors to the Graduate office to the
appropriate staff member.

**If you need any information or have any
suggestions. . .**

**Go to our web site at
www.etsu.edu/gradstud/gpsa.htm**

If you have any interesting news or events that you would like
to see in our upcoming newsletter, let us know! Email your
information to wyattlg@etsu.edu and be sure to keep an eye
open for future editions of
-The Graduate-

