

## ETSU offering new doctor of physical therapy program

In January 2004, ETSU will welcome the inaugural class of students in the new Doctor of Physical Therapy (D.P.T.) program.

The Tennessee Board of Regents and the Tennessee Higher Education Commission recently approved the program. Physical therapy is currently taught at the master's level but is being converted to the D.P.T. to meet additional competencies identified by the American Physical Therapy Association (APTA). These competencies will fulfill higher standards of practice necessary to satisfy the increasing demands and responsibilities of the profession.

Duane Williams, chair of the Department of Physical Therapy, says the conversion to the doctoral level is part of a national trend endorsed by APTA that, by the year 2020, establishes the clinical doctorate in physical therapy as the first professional degree needed to be eligible to practice in the field.

"Our program is geared toward preparing graduates for clinical practice, and we will continue to prepare our students to assume greater responsibility in the health care

setting," Williams said. "The D.P.T. curriculum incorporates more problem-solving and evidenced-based practice, whereas the latest research knowledge available can be applied in patient care."

The university's physical therapy program is housed within the College of Public and Allied Health and has graduated more than 100 physical therapists since 1997 with a 97 percent passage rate on their licensure exam. Through the years, the department has maintained a successful record of accreditation with APTA's Commission on Accreditation in Physical Therapy Education.

"ETSU's physical therapy program is a true asset to our region and represents a partnership between the university and several local hospitals, including Johnson City Medical Center, Wellmont-Holston Valley Medical Center, Wellmont-Bristol Regional Medical Center, and the James H. and Cecile C. Quillen Rehabilitation Hospital," said Dr. Wilsie S. Bishop, dean of Public and Allied



Duane Williams (center), chair of Physical Therapy, works with two students in the ETSU physical therapy program.

Continued on page 4

## Generous gift valued at millions benefits four institutions in two states

When J.W. "Bill" and Pearl Carrier wanted to do something that would benefit future generations of students seeking a higher education they decided on a unique solution to their dilemma of which

school to support. They picked four instead — two public and two private — three in Tennessee and one in Virginia.

The Carriers established a Charitable Remainder Trust (CRT) to ultimately create the "Bill and Pearl Carrier Scholarships" by using a 5.01-acre tract of land located in Sullivan County adjacent to NASCAR's famed Bristol Motor Speedway. The property is part of the larger Red Barn Campground operated by the couple on land that has been in the Carrier family for more than five decades.

Over the years, the value of the trust donation is expected to grow beyond its original estimated worth, which is presently placed at the multimillion-dollar level.

The future charitable beneficiaries of the CRT are ETSU and two-year Northeast State Community College, which are sister schools in the Tennessee Board of Regents system, as well as Milligan College and Southwest Virginia's Emory & Henry Col-

Continued on page 4



J.W. "Bill," Pearl and Julia Carrier

**“If you think education is expensive, try ignorance.”**

— *Derek Bok*

*ETSU Accent*, for and about university activities and employees, is published by News and Information Services in the Office of University Relations. News items for upcoming issues should be typed and double-spaced, and forwarded to Jennifer L. Hill, Coordinator, Box 70717, 300 Burgin E. Dossett Hall, telephone 439-5693, e-mail [hill@mail.etsu.edu](mailto:hill@mail.etsu.edu).

**Contributing writers this issue:**

Carol Fox, coordinator, University Relations  
Kristn C. Fry, director, News and Information Services

Bobby Funk, director, Division of Theatre  
Jennifer L. Hill, coordinator, News and Information Services

Dr. Thomas Jenrette, professor, Music  
Dr. Ted Olson, interim director, Center for Appalachian Studies and Services

Fred Sauceman, executive assistant to the president for University Relations

Joe Smith, coordinator, University Relations  
Jack Tottle, director, Bluegrass, Old-Time and Country Music Program

Blair White, director, Reece Museum/Slocumb Galleries

**Photographs by ETSU Photo Lab**

Larry Smith, director  
Jim Sledge, photographer

East Tennessee State University is a Tennessee Board of Regents institution. The TBR is the nation's sixth largest higher education system, governing 45 post-secondary educational institutions. The TBR system includes six universities, 13 two-year colleges and 26 technology centers, providing programs to over 180,000 students in 90 of Tennessee's 95 counties.

**Accreditation**

**Commission on Colleges of the Southern Association of Colleges and Schools**

East Tennessee State University is accredited by the Commission on Colleges of the Southern Association of Colleges and Schools (1866 Southern Lane, Decatur, Ga., telephone number 404-679-4501) to award certificate, associate, bachelor's, master's, educational specialist, doctor of education, Ph.D. and M.D. degrees.

*East Tennessee State University is fully in accord with the belief that educational and employment opportunities should be available to all eligible persons without regard to age, gender, color, race, religion, national origin, disability, veteran status or sexual orientation.*

*ETSU makes available to prospective students and employees the ETSU Security Information Report. This annual report includes campus crime statistics for the three most recent calendar years and various campus policies concerning law enforcement, the reporting of criminal activity, and crime prevention programs. The ETSU Security Information Report is available upon request from ETSU, Department of Public Safety, Box 70646, Johnson City, TN 37614-1702. The report can be accessed on the Internet at: [http://www.etsu.edu/dps/security\\_report.htm](http://www.etsu.edu/dps/security_report.htm).*

**TBR #220-001-03 50M**

## Important Information on the Online Calendar System

Need to publicize an event? Looking for weekend entertainment? Wonder when the next major public lecture will be?

Check out ETSU's interactive online calendar! From the main ETSU home page ([www.etsu.edu](http://www.etsu.edu)), click "Calendars" to find master and categorical lists of upcoming events. Also, when you visit "Faculty and Staff," "Colleges and Schools," "Current Students" and other second-level pages, you'll see several of those same items, carefully selected for the appropriate audiences, listed on the right-hand side of those pages.

### How to Place Your Event on the Calendar

If your office, department or organization is sponsoring an upcoming event that would be of interest to the campus community and the public, you'll want to publicize that event as early as possible through the online calendar.

Items on this calendar are entered by selected individuals – "authorized users" – representing over 40 campus divisions, using information provided to them by the faculty, staff and students they represent.

To have an item placed on the calendar, please visit the **Calendar Information page** posted by the Office of University Relations at [www.etsu.edu/univrel/calendar.htm](http://www.etsu.edu/univrel/calendar.htm). First, please read the "**Calendar Tips from University Relations**" handout, which was initially written for authorized users but will also help you as an event planner to become familiar with the types of information needed and the style used. It will guide you through other aspects of the publicity needs of your planning process, because your calendar item may be used by the University Relations Office for a news release to be sent to area media, and it might also show up here in *Accent*!

Then print and completely fill out the **Online Calendar Event Information Form** and turn it in to the authorized user for your area, who will enter the information into the calendar system for you. To find the **authorized user** for your area, please visit <http://infoserv.etsu.edu/cal/authorized.asp>.

If you have any questions, please contact the authorized user for your area or Jennifer Hill in University Relations at [hill@etsu.edu](mailto:hill@etsu.edu).

### Hear 'ETSU Voices' every Monday on WJCW

Tune in to "ETSU Voices" each Monday on WJCW-AM 910. The 25-minute show, featuring university people and programs, airs at 9:35 a.m. and is hosted by Fred Sauceman, executive assistant to the president for University Relations.

## Fall enrollment up almost 3 percent

ETSU's fall 2003 undergraduate and graduate enrollment of full-time equivalent (FTE) students increased 2.9 percent. And, as a result of the strategic planning ETSU has done to provide students with sufficient classes, the average number of courses students are taking is higher than it has been in previous years.

The overall headcount for fall 2003 is 11,877, a 2.3 percent increase of 264 students over last fall. This number includes 234 medical students and 248 physicians enrolled in residency and fellowship programs through the James H. Quillen College of Medicine.

According to Dr. Linda Doran, vice provost for academic affairs, fall 2003 is a record year for enrollments in a number of categories. The number of first-time freshmen, at 1,554, is the highest since 1996. This number represents a 5.9 percent increase in the size of the freshman class. Doran points out that, despite the difficult budget situation, ETSU has chosen not to decrease scholarship funds available to new students, and the recruitment of academically talented students through scholarship support has added to the growth of this year's freshman class.

The number of new transfer students

(856) is at an all-time high. This number represents a 13.4 percent increase over fall 2002. Doran emphasizes that ETSU's close working relationship with Northeast State, Walters State, Pellissippi State, and many other community colleges in Tennessee and bordering states to assist students in transferring successfully accounts for this upward trend in these particular students.

The School of Graduate Studies welcomes a record enrollment nearing 1,900 students. Two new graduate programs — the Master of Social Work and the Doctorate of Audiology — attracted strong pools of applicants. ETSU experienced a significantly large increase in applications to graduate school as well as positive growth in most graduate programs with admissions that are increasingly more selective.

The Master of Arts in Teaching has experienced exceptional demand from individuals wanting to enter the profession of teaching from other fields of undergraduate preparation. The Doctor of Science in Nursing, a new doctoral program that began last year, has enrolled its second class.

ETSU also saw growth in enrollment at off-campus locations and through Internet

**Continued on page 4**

## GoldLink Touchtone terminated

The telephone version of ETSU's *GoldLink* course registration system was terminated as of Tuesday, Sept. 23.

Students will still be able to register for classes, pay fees, drop/add, check grades and perform other necessary functions using the *GoldLink Online* system. In addition, several services are available through *GoldLink Online* that were not available through *GoldLink Touchtone*, including updating addresses, marital status and next-of-kin information.

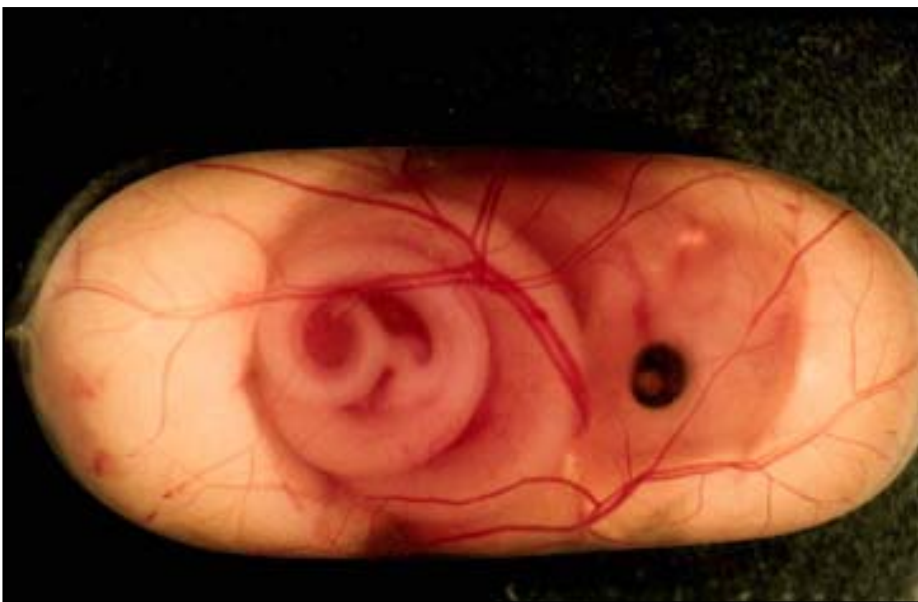
"The primary reason for terminating this service is that the technology involved in the phone system has become obsolete and is no longer supported by the vendor," said Kyle Jackson, ETSU assistant registrar. "The lack of technical support has resulted in the inability to accept credit card payments, as well as other incompatibilities with *GoldLink Online*."

Another concern has been the lack of usage of the system, which does not justify continued investment of personnel and financial resources.

Students may access *GoldLink Online* by going to [www.etsu.edu](http://www.etsu.edu) and clicking on *GoldLink*. The ID numbers and PINs are the same as those used for *GoldLink Touchtone*.

Those wishing additional assistance may visit the Registrar's Office, 102 Burgin E. Dossett Hall, or call the help line at 439-5584.

## Cover Art



The work of Dr. James R. Stewart, biological sciences, is featured on the cover of the Sept. 1 issue of the *Journal of Experimental Zoology Part A: Comparative Experimental Biology*. Stewart's original shot of a snake embryo was converted to digital by Larry Smith, director of the University Photo Lab, University Relations.

**"The most important function of education at any level is to develop the personality of the individual and the significance of his life to himself and to others. This is the basic architecture of a life; the rest is ornamentation and decoration of the structure."**

— Grayson Kirk

# Carrier Charitable Remainder Trust

Continued from page 1



ETSU President Dr. Paul E. Stanton Jr. presents the Carrier family with ETSU rocking chairs.

lege, both smaller, private, church-affiliated schools. It is the first time this diverse group of public and private institutions of higher education will benefit from one generous donation.

The CRT pays a lifetime income to the donors and means an immediate income tax charitable deduction for the couple, as well as valuable reductions in any federal and state estate taxes in consideration of assisting the charitable organizations.

The ETSU Foundation and Milligan will eventually each receive 30 percent of the proceeds for the Bill and Pearl Carrier Scholarships once the property is sold in the CRT, with the other two schools, Northeast State and Emory & Henry, receiving 20 percent each.

Since Bill Carrier is from Tennessee and Pearl Carrier from Virginia, they chose to support schools in both states. Neither of the Carriers attended college, but both know

the value of continuing an education beyond the high school level. The trust is a way for the couple to ensure that future generations of students from the region will be able to obtain a college education.

When announcing the gift, representatives of the four institutions noted that the Carriers' diplomatic selection of schools in two states reflects their commitment to help provide funding for the educational needs of future students. The family decision evolved from estate planning, as the couple is making arrangements to retire, but the idea of using the long-term donation to benefit institutions of higher education came from the Carriers' attorney, Lee Davis, who notes that the couple hopes others will follow their lead and provide scholarships to local students.

— Kristin Clark Fry, Director  
News and Information Services

## Fall enrollment

Continued from page 3

courses. Over 400 students are enrolled in off-campus cohort programs ranging from graduate programs in education in Morristown, Sevierville, Greeneville, and Bristol to nursing programs in Cleveland, Mountain City, and Kingsport. A cohort is a group of students who stay together through degree completion, and these extended cohort programs enable students to complete degrees closer to their own homes.

Enrollments in the Regents Online Degree Program also continue to grow, with this fall's total of just over 140 majors representing a 45 percent increase over last fall.

## Doctor of physical therapy program

Continued from page 1

Health. "These institutions graciously helped provide start-up money and continue to remain supportive of our students, allow-

ing us to offer a high caliber program that has produced graduates who are working to alleviate a once critical shortage of physical therapists in this region."



An ETSU physical therapy student works in a research laboratory.

To be considered for the D.P.T. program, students must meet specific eligibility requirements, including, but not limited to, the completion of certain prerequisite courses, as well as a baccalaureate degree before beginning the D.P.T., which will require approximately three years to complete. Applications for the class in 2004, beginning in January, are still being accepted.

Students in the master's program and licensed physical therapists may be eligible for advanced standing in the new program.

— Joe Smith, Coordinator  
University Relations

## Fulbright Student Program application deadline approaches

Faculty are asked to inform their students that applications are being accepted for the 2004-2005 Fulbright Student Program. This program provides funding for one academic year of study or research abroad, to be conducted after graduation from an accredited university. Grantees undertake self-designed programs in a variety of disciplines. Applications should be submitted in full to Maria Costa (439-7737, [costa@etsu.edu](mailto:costa@etsu.edu)) by Oct. 1; call or e-mail for application information.

## ETSU Division of Theatre to present 'The Laramie Project'

"The Laramie Project," the acclaimed play that chronicles a small western town's loss of innocence following the 1998 death of Matthew Shepard, a 21-year-old University of Wyoming student, will be presented next month by ETSU's Division of Theatre.

This play was created by Moses Kaufman and members of the Tectonic Theatre Project, who traveled to the town of Laramie, Wyo., six times over the course of a year and a half after Shepard, who was gay, was murdered. After interviewing more than 200 residents of the town, they crafted "a deeply moving play about bigotry and tolerance, fear and courage, hate and hope."

The Division of Theatre is entering the student-directed and student-designed production in the Kennedy Center/American College Theatre Festival competition in Clarksville Oct. 22-25.

The production is directed by Carrie Smith, with assistance from Holley Housewright, stage manager, and James Cronin, assistant to the director. The eight actors, who will play multiple roles, are Andrew Baxter, Travis Eisenbise, Erin Estep, Julie Roberts, Becky Shaffer, Sonja Taylor, Ernest Weaver and Matt Weedman. Student designers are Pamela Adolphi, Rebecca Hickman and Rachel Townsend.

Performances will be held Thursday-Saturday, Oct. 16-18, at 7:30 p.m. and Sunday, Oct. 19, at 2 p.m. in the Bud Frank Theatre



"The Laramie Project" was named one of the best plays of 2001 by *Time Magazine*, and the *New York Times* called it "an amazing piece of theatre . . . leaves us sadder, wiser and tentatively more hopeful."

on the ground floor of Gilbreath Hall. (Originally scheduled for Oct. 9-12, the play was rescheduled due to Fall Break.) Admission is \$10 for the general public and \$5 for students with valid I.D.

For more information, call the Division of Theatre box office at 439-7576.

## Fossils, prints, paintings and more on display at ETSU

ETSU's Reece Museum and Slocumb Galleries are hosting five new exhibitions.

At the Reece Museum, the annual Alumni Exhibition is "Manifestations," a display of prints by John Hilton, who graduated from ETSU with a B.F.A. in printmaking in 2000. He recently earned his M.F.A. from Clemson (S.C.) University and currently serves as an adjunct faculty member in ETSU's Department of Art and Design. The Reece is "A Sense of Place," an M.F.A. exhibition in painting by Neli Ouzounova, a graduate student and teaching assistant in the Department of Art and Design who plans to graduate from ETSU in December. She graduated from Nikokai Rainov, The College for Plastic Arts, Sofia, Bulgaria, and received her B.F.A. in 2001 from Western Kentucky University.

In addition, the Reece Museum is featuring recent fossil finds from the Gray Fossil Site presented by Dr. Steven Wallace, director of research and assistant professor in the ETSU Department of Physics, Astronomy and Geology. These include the saber-toothed cat dental fragments, which confirm the scientists' suspicions that it would be there, and the short-faced bear jaw, which restricts the age of the site.

"We previously had a window of from 18-4.5 million (years), but now we can say that it is more likely between 7-4.5," Wallace said. "Basically, the genus of bear that we

have does not show up in the fossil record until 7 million years ago, so that is our maximum age. Rhinos, which we have at the site, became extinct 4.5 million years ago, so that is our minimum."

These exhibits at the Reece Museum will close on Oct. 19.

"New Faces – Changing Perspectives," an exhibition of works by two new faculty members in the Department of Art and Design, will be on display at Slocumb Galleries, located in Ball Hall, through Friday, Sept. 26. Mindy Herrin, who teaches

metalsmithing, received her B.F.A. in 1998 from Texas Technological University and her M.F.A. in 2002 from Indiana University. Patricia Mink, who teaches weaving and textiles, earned her B.A. from Kalamazoo College in 1981 and her M.F.A. in textiles from Eastern Michigan University in 1996.

Reece Museum hours are 9 a.m.-4 p.m. Monday-Wednesday and Friday; 9 a.m.-7 p.m. Thursday; and 1-4 p.m. Saturday and Sunday. Hours at Slocumb Galleries are 8 a.m.-4:30 p.m. Monday-Friday.

For more information, call 439-4392.

## King Wilkie to perform at Down Home

Many people, both on the ETSU campus and off, who keep up with the ETSU Bluegrass, Old-Time and Country Music Program remember Abe Spear.

Primarily a banjo player, Spear also played mandolin, bass and guitar and sang with as many as four ETSU bands at the same time. He was an energetic supporter of the program, and, according to Program Director Jack Tottle, was always ready to help his fellow students, as well as the faculty, in whatever way was needed.

For the past year, Spear has toured with a young bluegrass band, King Wilkie, which is named after a prized horse owned by Bill Monroe early in the legendary bluegrass

musician's career. Within the past month, the band took an important career step by signing with Rebel Records.

Spear's work with the group has already provided a wealth of experience. "I got to play on stage with Peter Rowan and Vassar Clements (at a festival) in New York," he wrote this summer. "I got to do almost the whole set with them because they needed a banjo player. It was awesome!"

Spear and King Wilkie will perform in Johnson City at Down Home, 300 W. Main Street, on Saturday, Sept. 27, at 9 p.m. Tickets are \$8.

For more information, call Down Home at 929-9822.

## Jenrette, Rice-See to perform in Faculty Recital featuring piano and voice

Baritone Dr. Thomas Jenrette and pianist Dr. Lynn Rice-See will present a Faculty Recital on Monday, Oct. 20, at 7:30 p.m. in Mathes Hall.

Jenrette is in his 25th year as director of choral activities and professor of music. He holds two degrees from the University of North Carolina at Chapel Hill (UNC) and a doctor of musical arts degree in voice performance from the University of Michigan (U-M). As a baritone soloist, he has appeared with the Johnson City and Kingsport symphony orchestras, the Jacksonville (Fla.) Symphony, and university choirs and orchestras at UNC; U-M; Appalachian State University, Boone, N.C.; Southwest State University in Minnesota; and Marietta (Ohio) College.

Rice-See, professor of piano, has appeared as a recitalist, concerto soloist and chamber musician in the United States and Europe. Since her 1982 Carnegie Recital Hall debut, she has performed three times with the Janáček Philharmonic Orchestra in Ostrava, Czech Republic. As a soloist, she has appeared with the Gulf Coast Symphony and symphonies in Johnson City, Kingsport

and Huntsville, Ala. The graduate of the Peabody Conservatory and the Juilliard School also holds a doctor of musical arts degree in piano from the University of Southern California.

Performing a program of mostly German music, Jenrette and Rice-See will open the recital with the "Liederkreis, Op. 39" by Robert Schumann. Considered one of Schumann's greatest masterpieces, as well as one of the greatest masterpieces of song literature, the "Liederkreis, Op 39" was composed in 1840 and is the setting of 12 poems by Joseph von Eichendorff.

"Although not a true song cycle in the strictest sense," Jenrette says, "the songs of 'Liederkreis, Op. 39' are very much connected by a unity of theme — all the songs are romantic in the sense of being in close touch with nature, and they are full of overwhelming personal emotion and the feeling, as if in a dream, that something momentous is about to happen."

For the program's second half, Jenrette and Rice-See will be joined by soprano Karen Smith, instructor of voice in the Department of Music; mezzo soprano Candra

Savage, junior vocal performance major; tenor Zach Marshall, senior vocal performance major; and Robert Jeter, senior piano performance major. Savage and Marshall are students of Jenrette, and Jeter is a student of Rice-See. Smith holds degrees from Louisiana State University and the Cincinnati College Conservatory of Music. She has sung with the Cincinnati Opera and the Opera Theatre of Lucca, Italy.

The four singers and two pianists will perform the "Liebeslieder Walzer" by Johannes Brahms. This set of 18 songs for vocal quartet and piano four-hands is characterized by its lighthearted Viennese spirit, and like the Renaissance madrigals, they are primarily intended for the enjoyment of the performers.

Concluding the program, Jenrette will be joined by Marshall for the "Pearl Fishers" by Georges Bizet, one of the most famous duets from operatic literature for baritone and tenor.

This concert is free and open to the public. For more information, call 439-6949 or 429-4270.

## Haskill brings international experience, excitement of Sousa to campus

Roxanne Haskill, new director of bands at ETSU and former head of the Marine Corps Music Program in Quantico, Va., brings international experience to her position.

For four years, she has traveled to England and most often served as a guest conductor with Her Majesty's Royal Marines

Band of Plymouth. She conducted clinics and appeared in concerts, including one in a vast cathedral in Liverpool.

"The British Marines have a musical tradition going back hundreds of years," Haskill notes, "and our U.S. Marines patterned their programs, and even their uniforms, on the British model."

Haskill is planning a return visit to Germany next summer. "German schools provide no music program," she explains, "so every town has a local band." During her last visit to Steinhofen, she worked with local musicians of all ages and assisted a jazz band interested in learning American music.

In her new duties at ETSU, Haskill has plans for a grand entrance — the ETSU Wind Ensemble will present a concert filled with the music of John Philip Sousa and his contemporaries. "I've tried to select music Sousa might have chosen for an evening of great entertainment," she says.

This special concert for Homecoming will be dedicated to ETSU alumni, and the performance is scheduled in Mathes Hall on Friday, Oct. 17, at 7:30 p.m.

The program will be repeated for the general public on Thursday, Oct. 23, also at 7:30 p.m., in the Martha Street Culp Auditorium at the D.P. Culp University Center.

The concerts are free and open to the public. For further information, call Haskill at 439-4296.

— Carol Fox, Coordinator  
University Relations

## ETSU Friends of Music launches Web site

To celebrate its 25th Anniversary in 2004, the Friends of Music at ETSU has just launched a Web site in support of the ETSU Department of Music's programs and fund-raising activities. The URL for the site is <http://faculty.etsu.edu/patricks/FOMhome3.htm>.

The main mission of the FOM is to raise funds that "assist in increasing academic scholarships for music students, and provide financial support for special projects of music faculty involving students in both instruction and performance."

The site includes current and historical information about the group and its activities over the span of 25 years since its found-

ing in 1979. Additional features focus on various music scholarships, endowment funds and fund-raising projects.

Also highlighted is information about Department of Music programs, ensembles and events, as well as access to the Area Art and Music Events Calendar.

A special "Music on the Web" section includes access to music and music-related Web sites on a variety of topics and genres, libraries and research information available about music and composers, professional music educators' associations, and an eclectic group of miscellaneous "fun" Web sites, according to the FOM Web site's creator,

**Continued on page 10**

## **Nelson offers opportunities for art students, faculty and alumni**

In an agreement with the ETSU Department of Art and Design, Dick Nelson is offering his business, Nelson Fine Art Center, 324 E. Main Street, for monthly exhibitions featuring works by ETSU students, faculty and alumni.

On the first Friday of each month, Nelson will host a public reception for the artist or group of artists exhibiting at that time.

A piece of each artist's work will be donated to a silent auction with the proceeds going toward the Dwight and Louise Nelson Art and Design Scholarship. This new award will assist ETSU art and design students demonstrating a successful academic career and financial need.

According to the ETSU Foundation, Nelson appreciates his parents' support for his career and chose this scholarship as a way to honor them for their continued love and understanding.

For further information, or to contribute to the scholarship fund, contact Tisha Harrison of the ETSU Foundation at 439-4242.

## **'Responsibility in Human Subject Research' seminar**

A seminar on "Responsibility in Human Subject Research – IRB 101" will take place at ETSU at Bristol, 1227 Volunteer Parkway, on Friday, Oct. 3, from 8 a.m.-3:30 p.m.

Participants will briefly review historical events preceding the establishment of Institutional Review Boards (IRBs), the requirements for federal oversight of human subject research, and the changing arenas of social, behavioral and clinical research. They will gain a deeper understanding of both federal and institutional requirements. The highlight of the course will be a "lively review" of two case studies through the eyes of the IRB.

The seminar is designed for IRB members; clinical research organizations; co- or sub-investigators as named on Applications for Research; research team members; sub-

contractors or consultants associated with a sponsored study; compliance managers and administrators; principal investigators for biomedical, social and behavioral research; clinical research coordinators; research nurses; and departmental administrative and/or support staff directly involved with the completion of required forms or the support of residents, thesis, doctoral or medical students.

Participation in the seminar will satisfy the human subject research compliance education requirements established by federal mandate effective Jan. 1, 2001, for all institutions conducting human subject research under an assurance. Successful completion of a compliance course in the ethical conduct of human subject research is required prior to submitting a protocol, study or proposal to the IRB for review.

For participants interested in receiving certification, a written post-course assessment will be offered at no additional fee. The course is approved for .35 continuing education units and 3.5 hours of TQI credits, in addition to a three-year certification for those electing the testing option and receiving a score of at least 85 percent.

This seminar is sponsored by the ETSU offices of Professional Development and Institutional Research and Sponsored Programs. The registration fee of \$300 includes lunch and all seminar materials. Enrollment is limited to 100. Pre-registration by Monday, Sept. 29, is mandatory.

For registration or more information, call 439-8083.

## ***Who's Who* applications available**

Applications for membership in *Who's Who Among Students in American Universities and Colleges* are being accepted by the Office of Student Affairs.

For 68 years, this national *Who's Who* program has annually honored outstanding campus leaders for scholastic and community achievements.

Eligibility requirements include junior, senior or graduate student classification for

the fall semester; a 2.8 minimum grade point average; and documented evidence of service and leadership in at least two of the following six categories: community service, student organizational life, campus governance, the fine arts and music, athletics, and publications.

The deadline for application is Friday, Nov. 7. Applications are available in the Office of Student Affairs on the upper level of the D.P. Culp Center. Interviews will be held in late November.

For more information, call Student Affairs at 439-4210.

## **Institute for Continued Learning offers diverse fall classes**

Subjects as diverse as the environment, archaeology, clocks, poetry and underwater creatures are among topics selected for fall classes in the Institute for Continued Learning (ICL), ETSU's learning-in-retirement organization, which begin Tuesday, Sept. 30.

The ICL is open to any interested person and is "member-powered, member-driven and member-governed." There are no educational prerequisites, examinations or grades. Participants decide what study groups, forums, classes and other activities will be held and are responsible for finding leaders for the sessions and selecting officers.

Topics on the fall schedule include history, music, literature, theatre, film classics, an overview of the blues, "A Better Environment," "The Matter of Time: Clocks and Things," "Be Your Own Case Manager," "Pigs and Hickory: A Celebration of Southern Barbecue Culture," "When Religion Turns Evil," "Collecting and Investing in Rare Books and Manuscripts: Gold in Your Attic," "On the Trail of Lewis and Clark," "Creatures of the Underwater World," "Sisters Without a Story: World War II Military/ Forgotten But Not Gone: Mohican Indians," "Thank You for Being Such a Pain: Dealing with Difficult People and Behavior," "Zeus and Jehovah – Who's Ahead?" and many

**Continued on page 8**

Continued from page 7

others. (See related article on page 10.)

Instructors for fall sessions include a variety of ETSU faculty and staff, area religious leaders, businesspeople, media professionals, musicians and others.

The full program membership for the 2003 fall semester is \$25, which entitles members to attend any or all sessions offered by the ICL. An additional \$10 fee will be required of members who participate in an all-day trip to Knoxville to visit the McClung Museum and Knoxville Museum of Art, which will take place Oct. 30.

The ICL kicks off Tuesday, Sept. 30, with an informal "Get Acquainted Coffee" from 9-10 a.m. in the Carnegie Library, Bldg. 17 on the campus of the James H. Quillen Veterans Affairs Medical Center, Mountain Home. Classes will be held Tuesdays, Wednesdays and Thursdays in the Carnegie Library's Gerber Lecture Hall, and parking is available in Lot 178 behind Johnson City Medical Center on Med Center Drive North; participants may make arrangements to carpool from this lot with other ICL members.

For registration or more information, call 439-8083.

### **RDC Travel Grants**

The ETSU Research Development Committee (RDC) has a \$12,000 Travel Grant fund for university faculty.

These funds, provided from the vice provost for research's research support account, are available immediately to faculty for travel to present research results at professional conferences, meetings, shows or performance venues. They will remain available until expended.

There is no deadline for submission of an application. The maximum amount for any single request is \$500 for travel within the U.S., Canada, and Mexico and \$1,000 for travel outside of North America. The Travel Grant Guidelines and Application can be found at [www.etsu.edu/research/rdc/grants.htm](http://www.etsu.edu/research/rdc/grants.htm).

For more information, contact Cynthia Hardin, assistant director, Sponsored Programs, at 439-6000 or [hardinc@etsu.edu](mailto:hardinc@etsu.edu).

### **National Love Your Body Day**

National Love Your Body Day is Wednesday, Oct. 18, and ETSU's Counseling Center will observe the occasion by providing free information about healthy body image, as well as details about the effects of negative advertising by the alcohol, tobacco and fashion industries.

An information booth will be set up from 10 a.m.-2 p.m. in the Atrium of the D.P. Culp Center.

For more information, contact Kim Bushore-Maki at 439-4841 or [bushorem@etsu.edu](mailto:bushorem@etsu.edu).

### **Fatal Vision Goggle Olympics**

ETSU athletes will perform under the influence of Fatal Vision Goggles on Wednesday, Oct. 22 (rain date: Oct. 29), from 11 a.m.-1 p.m. on the Pedestrian Mall.

This free event, sponsored by the Counseling Center and Department of Intercollegiate Athletics, will provide information about substance abuse while including fun, entertainment and giveaways.

For more information, contact Kim Bushore-Maki at 439-4841 or [bushorem@etsu.edu](mailto:bushorem@etsu.edu).

### **Astronomy events**

October activities sponsored by the ETSU Department of Physics, Astronomy and Geology include two observatory open houses and a planetarium show.

The open houses allow participants to hear a brief presentation on a popular astronomical topic and view various celestial objects through the telescopes at the Harry Powell Observatory, which is located off Narrow Lane above campus.

October's open houses include "**Radiation in Space**" by ETSU biophysicist Dr. Yuriy Raikazovskiy on Oct. 11 from 8-10 p.m. and "**Gravitational Lensing: Nature's Telescope Without Any Parts**" by ETSU astronomer Dr. Richard Ignace from 7:30-9:30 p.m. Open houses will be cancelled in the event of rain or cloud cover.

"**What is a Star, Anyway?**" is the focus of a planetarium show on Oct. 16 from 7-8 p.m. in the Hutcheson Hall planetarium. The program explains the birth, life and death processes in the evolution of a star.

For more information on these free public events, contact Dr. Beverly Smith at 439-8418 or [beverly@panda.etsu.edu](mailto:beverly@panda.etsu.edu) or Dr. Gary Henson at 439-6906 or [henson@etsu.edu](mailto:henson@etsu.edu).

### **Lunch Break Seminar**

"The Truth About Female Sexuality" is the topic of a free Women's Health Series Lunch Break Seminar to be held Thursday, Oct. 9, at noon in the East Tennessee Room of the D.P. Culp Center.

During this session, Dr. Judy Tudiver, a licensed psychologist in private practice in Johnson City, will explore what is known about female sexuality and anatomy and will dispel some commonly accepted myths.

For more information, call the ETSU Women's Resource Center at 439-7847.

### **Book Review Group**

The Book Review Group sponsored by the Women's Resource Center (WRC) will meet Wednesday, Oct. 15, to discuss *Four Corners* by Gail Diane Freud.

New members are always welcome, and participants are invited to bring their lunch. The meeting begins at noon in the WRC, basement suite 2, Panhellenic Hall.

For more information, call 439-7847.

### **'Women and Money' series full**

All seats are filled for "Women and Money," a Personal Finance Lunch Break Series scheduled for Oct. 16-Nov. 13.

Women who wish to take this five-part series on personal financial planning, which is co-sponsored by the ETSU Women's Resource Center, Eastern Eight Community Development Corp. and SAFECO, may call 439-7847 to be placed on a waiting list for a future offering of this series.

### **ETSURA annual meeting**

The ETSU Retirees Association's 16th annual meeting and luncheon will be held Friday, Oct. 24, from 11 a.m.-2 p.m. in dining room 2 of the D.P. Culp Center.

The luncheon consists of a baked potato bar with choice of cold and hot items, mixed green salad, dessert and coffee or tea.

Reservations are required. Retirees wish-  
**Continued on page 10**

## Study to review effectiveness of education about end-of-life-care

Researchers with ETSU Family Physicians of Bristol are conducting a study that will evaluate the effectiveness of cardiopulmonary resuscitation (CPR) patient education in helping older adults make decisions regarding end-of-life-care.

“Numerous studies have suggested that many patients and their family members are often forced to make quick decisions about CPR and end-of-life-care without understanding the implications of those decisions,” said Dr. Burt Banks, assistant professor of family medicine in the James H. Quillen College of Medicine.

Participants will begin the study by completing a brief questionnaire that assesses their general health status and understanding of CPR. They will then be randomly assigned into one of three groups that will watch a video or series of videos.

The videos are designed to help patients and surrogate decision-makers understand the concept of resuscitation, including the process, potential benefits, complication risks, and success rates and limitations, Banks explained.

One video presents a neutral discussion of CPR, while the others represent biased

attitudes that physicians might display. Banks emphasized that those who view the biased tapes will conclude the session by watching the neutral tape.

At the conclusion of each video, the participants will be asked to complete a survey about their attitudes and knowledge of CPR.

The study will be completed during a one-time visit to ETSU Family Physicians of Bristol, 208 Medical Park Boulevard, that will take less than an hour.

For more information, call 990-3012.

— *Joe Smith, Coordinator  
University Relations*

## Pinner participates in September 11 activities in Washington

ETSU’s Dr. Michael R. Pinner traveled to Washington, D.C., to participate in activities and commemorations surrounding the two-year anniversary of the September 11th terrorist attacks.



**Pinner**

The ETSU professor in Cross-Disciplinary Studies started at Georgetown University, where he interviewed Dr. John Esposito, “perhaps this nation’s best-known Islamic scholar,” as part

of a documentary film entitled “Raising Children to Allah: Growing Up Muslim in America.” Pinner and others presented their latest film, “Islam in America: After 9/11,” and also spoke at “Dar-Al-Hijra” in Falls Church, Va., the largest mosque on the east coast.

Later, he attended and shot film at the massive rally and remembrances of Sept. 11, 2001, on the Washington Mall, sponsored by CAIR (Committee of American-Islamic Relations).

In addition, Pinner and two colleagues in a documentary group called “Vital Visu-

als Inc.,” presented a video and gave a brief lecture at a commemoration at American University. Titled “Honoring Our Differences,” this program was a joint effort of that university’s Wesley Foundation and the Muslim Student Association.

Pinner says that for more than 10 years he has “studied, pondered and taught courses on Islam and its history and culture.” And, over the past several months, he has given lectures and participated in presentations and dialogue at the University of California-Berkeley, the University of Tennessee and the University of Toledo in Ohio.

## Documentary series addresses global social concerns

“One Earth, Three Worlds,” a Fall Documentary Series addressing global social concerns, is under way at ETSU. The series is co-sponsored by University Productions and Women’s Studies.

“I tried to pick films (for the series) that were related to issues that are coming up in today’s news, but that explored the issues in a fresh, engaging way,” said Mike Blair, who chairs the UP Documentary Committee.

Remaining films in the series are “Hell House” and “Our House.”

“Hell House,” which will be shown Wednesday, Oct. 22, addresses the modern wave of church-sponsored haunted houses.

“Our House” concludes the series on Wednesday, Nov. 19. This film is a “frank exploration” of gay and lesbian couples with children.

All of the documentaries are free of charge and were chosen to “spark free and open discussion.”

Blair said, “I think anyone who watches these films will be able to see an issue in a new way.”

For information, call 439-6828.

**“The best mirror is an old friend.”**

— *George Herbert*



### *‘Why Irish?’*

“Why Irish?” is the topic of a lecture on contemporary Irish literature to be held at ETSU on Tuesday, Sept. 30, at 7 p.m. in 401 Burleson Hall.

This lecture will be presented by Dr. Shawn O’Hare, an assistant professor of English at Carson-Newman College. He is editor of *Nua: Studies in Contemporary Irish Writing*, and his book about Irish novelist Jennifer Johnston will be published by Liffey Press, Dublin, in 2004. He has also published pieces about Samuel Beckett, Roddy Doyle, Deirdre Madden, Joseph O’Connor, James Plunkett and Colm Tóibín.

O’Hare’s lecture is offered as part of the “Irish and Scottish Literature” class taught by Dr. Ted Olson, interim director of the Center for Appalachian Studies and Services and director of the Appalachian, Scottish and Irish Studies program at ETSU. Interested guests are invited to attend the talk, which is sponsored by CASS and ASIS.

For more information, call 439-6172.



Continued from page 8

ing to attend should send their names and the names of their guests, along with \$8.50 per person, to make reservations. Checks should be made payable to ETSU, marked Agency Account No. 0-80626-2540, and mailed by Oct. 17 to East Tennessee State University, Office of Comptroller, Box 70732, Johnson City, TN 37614-1710.

Buffet assistance will be available for retirees and their guests, and limited reserved parking will be available near the Reece Museum.

For more information, call the Office of Human Resources at 439-5890.

### **Preview/orientation leaders needed**

All faculty and staff are asked to encourage outstanding students to apply for positions as Preview/Orientation Leaders for summer 2004.

Preview is a program that assists traditional-age entering students in their transition to college life prior to the start of classes, and orientation is for all entering students and parents. The new students are led by experienced students as guides.

Highly motivated, involved and enthusiastic students who have a 2.5 or better GPA and at least 24 credit hours after the spring 2004 semester are eligible to apply. Orientation leaders are paid for each orientation they work. Preview leaders are volunteers but will be reimbursed for meals during training. Meals will be provided during the program.

Applications will be available Oct. 1 in the Office of Student Affairs on the third level of the D.P. Culp Center. The deadline for turning in applications is Oct. 31. For more information, call 439-4210.

## **ICL: Turn up the blues and taste the 'cue**

Two elemental features of Southern culture, blues and barbecue, will be explored during the fall session of ETSU's Institute for Continued Learning, which begins Tuesday, Sept. 30.

The U.S. Congress has designated 2003 as "The Year of the Blues," and Wayne Winkler will provide an introduction to the blues when he visits the institute on Tuesday, October 14. Winkler is station manager of ETSU's public radio station, WETS-FM (89.5). WETS is airing the radio series "The Blues" on Friday nights at 11. This is the radio companion to the public television series of the same name.

Winkler is the host of "Blue Monday," a Monday afternoon staple in the Tri-Cities for 23 years. He will give an overview of the blues, illustrated with music and recorded interview segments, on Tuesday, Oct. 14, from 1-3 p.m.

Fred Sauceman, executive assistant to the president for University Relations, will present "Pigs and Hickory: A Celebration

of Southern Barbecue Culture" on Thursday, Oct. 16, from 10 a.m.-noon.

"Although barbecue is one of the foods most closely associated with the South, there is tremendous variety in its preparation," Sauceman said. "The animal to be barbecued, the particular part of that animal, the type of wood used, the vessel you smoke it in, whether you chop, mince, pull, or slice the final product, and the color and composition of the sauce vary greatly from one part of the South to another."

Tennessee barbecue traditions to be discussed range from Bluff City's Ridgewood Barbecue and its 55-year-old method of smoking fresh hams over native hickory wood, to the Memphis practice of barbecuing rolls of bologna and serving spaghetti bathed in barbecue sauce alongside a plate of ribs.

For information on ICL registration and other topics to be covered this fall, see the related article on page 7.

## **Husband and wife are tops in CPA exam**

Rarely do student husbands and wives choose the same major in college, and more rarely are both highly successful. The ETSU Department of Accountancy reports an outstanding exception.

Lei (Clark) Wang and his wife, Liu (Cathy) Yang, both took the Certified Public Accountant (CPA) exam in May in Virginia. Both passed the rigorous test with excellent scores. Clark Wang completed the

four-part exam with scores ranging up to the 99th percentile, while Cathy Yang reached as high as the 95th percentile. His score was among the top 10 in the state of Virginia, and hers was also among the top scores.

Yang completed ETSU's Master of Accountancy program last December and is employed by Pugh and Co. of Knoxville. Her husband plans to finish the master's program in December 2003.

## **Friends of Music Web site**

Continued from page 6

Stephen Patrick, who also serves as FOM secretary and webmaster.

FOM is always seeking new supporters, Patrick notes, and a copy of the FOM application form available on the Web provides details about categories and levels of support. All contributions are tax deductible.

The Web site will expand and change as new programs and projects are announced,

and as additional historical information is compiled.

Patrick suggests bookmarking the FOM page for future reference about plans and activities for the organization's upcoming Silver Anniversary during spring 2004.

Questions and comments about the FOM Web site should be directed to Patrick at 439-6994 or [patrick@etsu.edu](mailto:patrick@etsu.edu).

# Fall sports are in full swing!



The Buccaneer football, volleyball, softball, cross country, soccer, men's and women's golf, and men's and women's tennis teams are active this fall! Keep up with the Bucs by visiting [www.etsubucs.com](http://www.etsubucs.com) . . . and go enjoy a game!



## Go Bucs!